

HOGgles: Visualizing Object Detection Features



Carl Vondrick Aditya Khosla Tomasz Malisiewicz Antonio Torralba

Massachusetts Institute of Technology
Computer Science and Artificial Intelligence Laboratory



Chair







Car





Aeroplane



Aeroplane



Aeroplane





Person





Chair

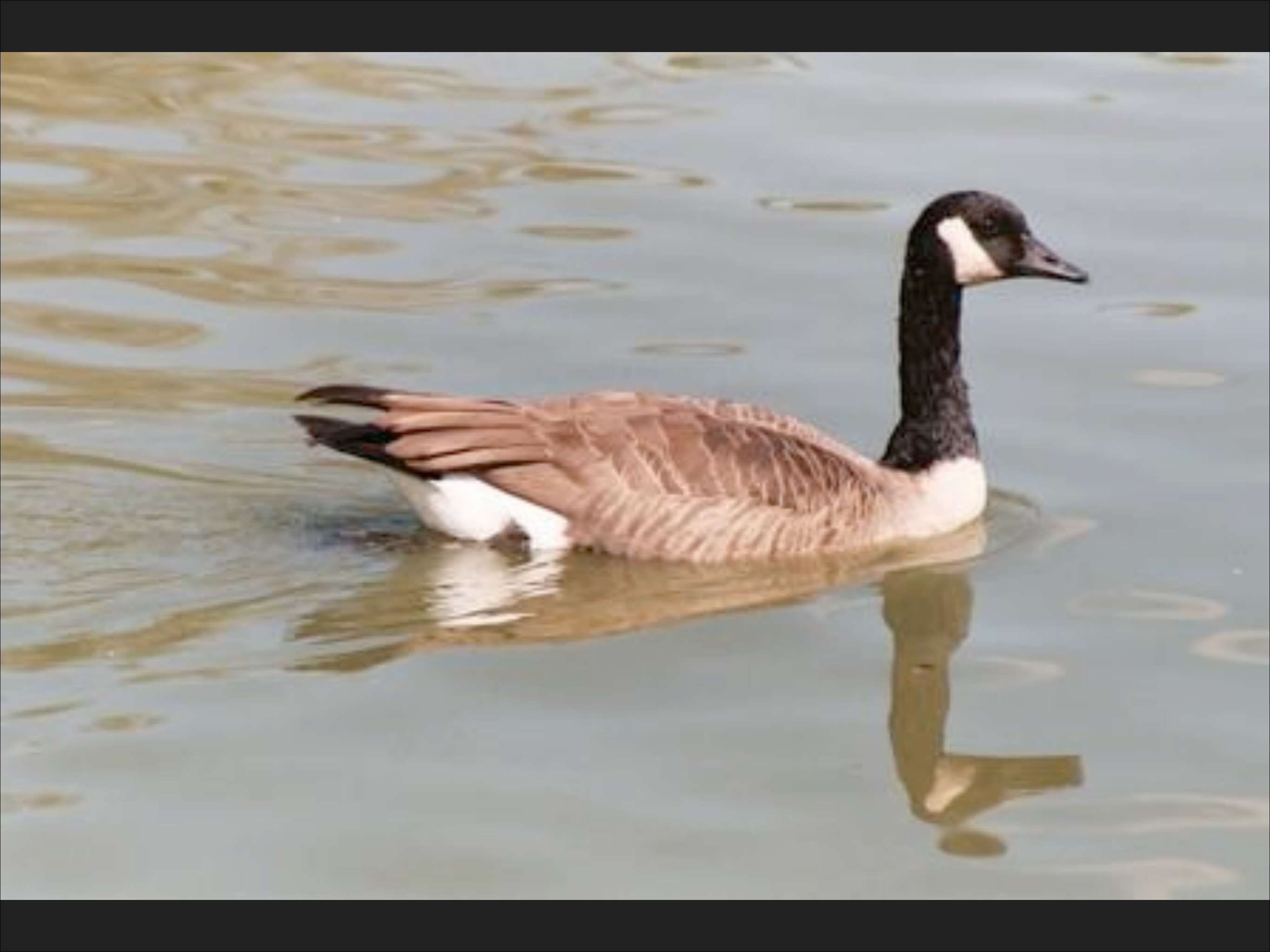


Chair



Chair





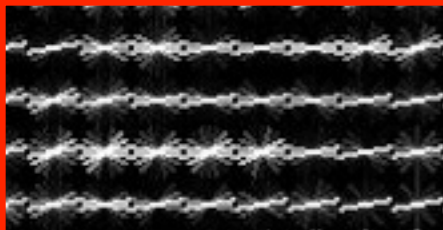


Car

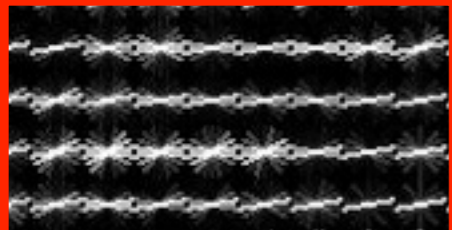




Car

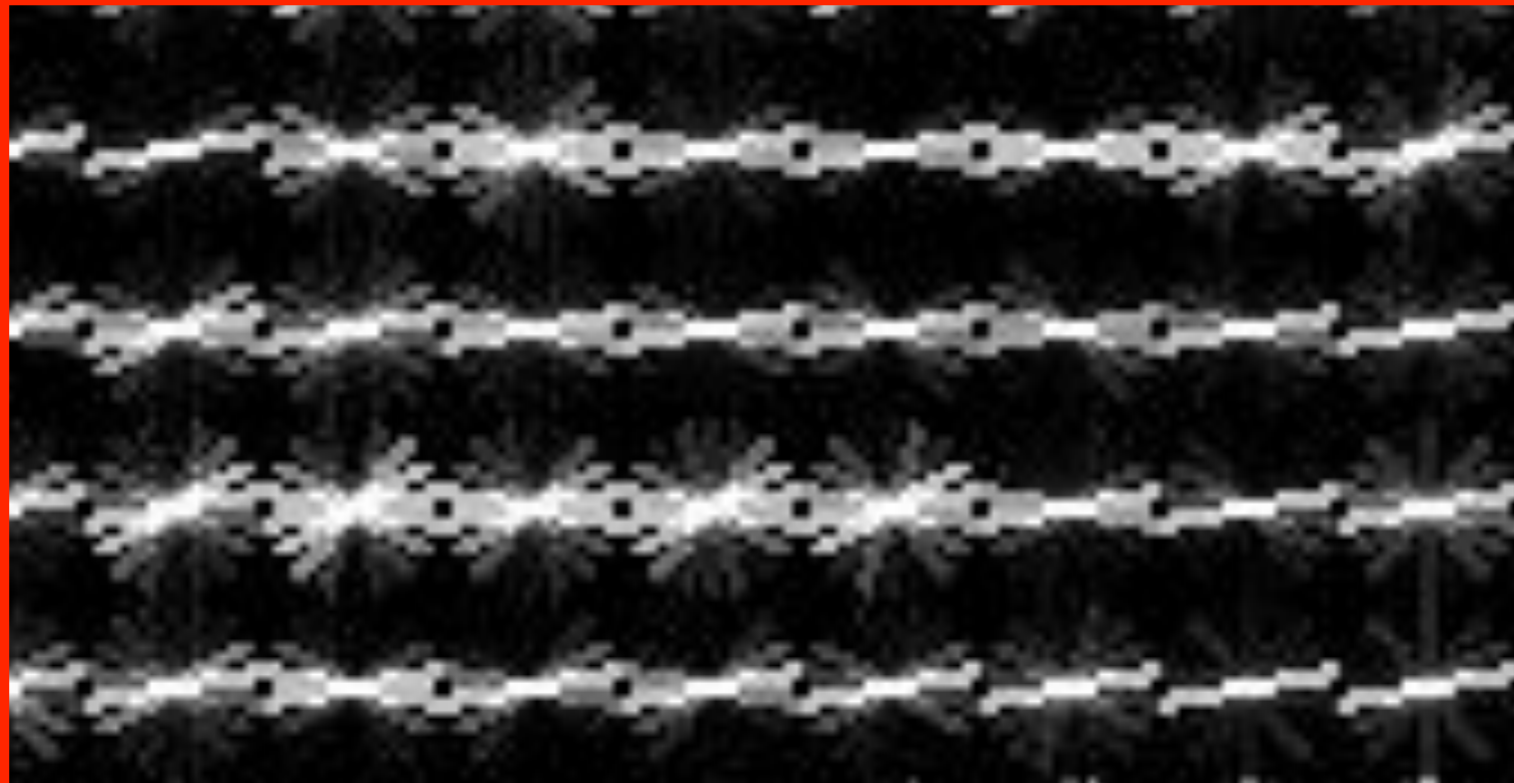


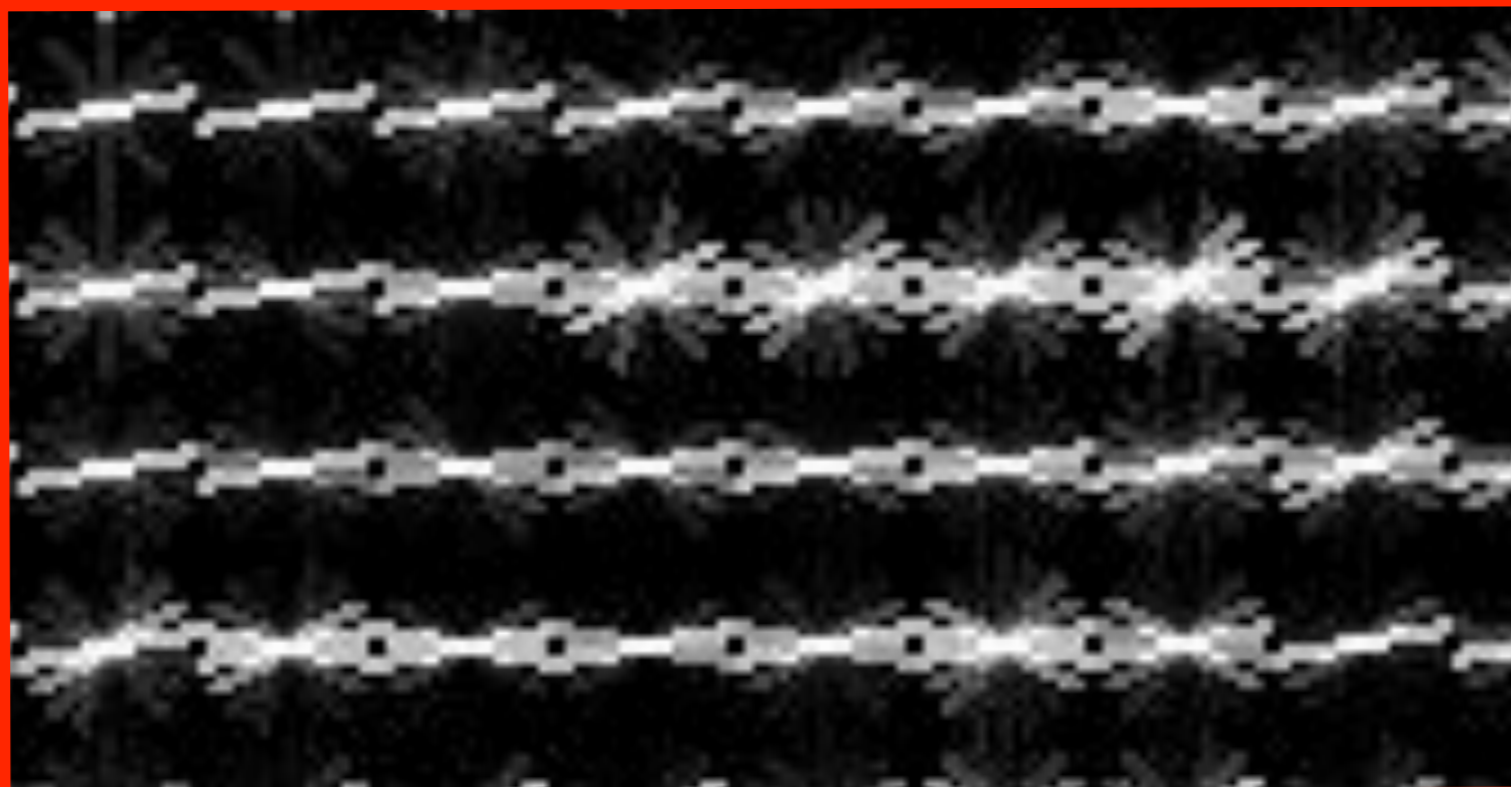
Car



Car

Car



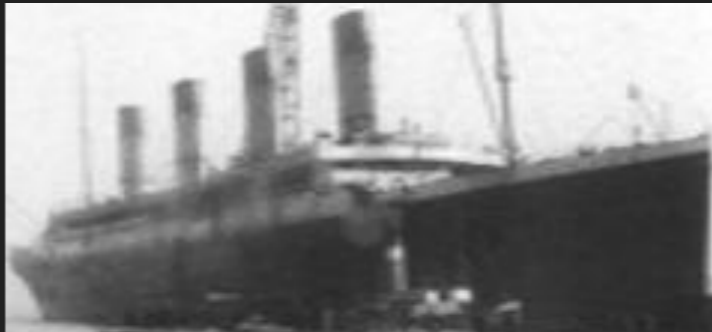


Car

What information does HOG have?

What information does HOG have?

Image

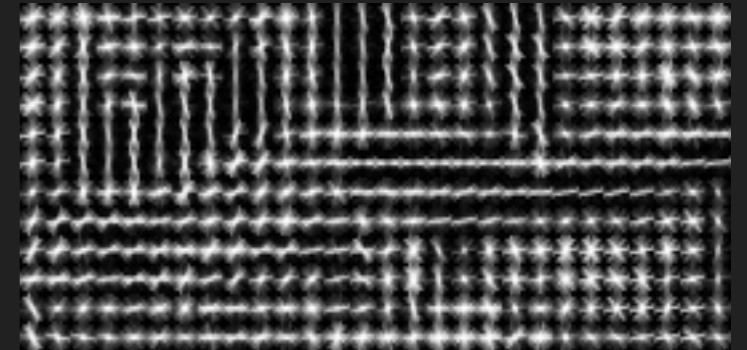


What information does HOG have?

Image

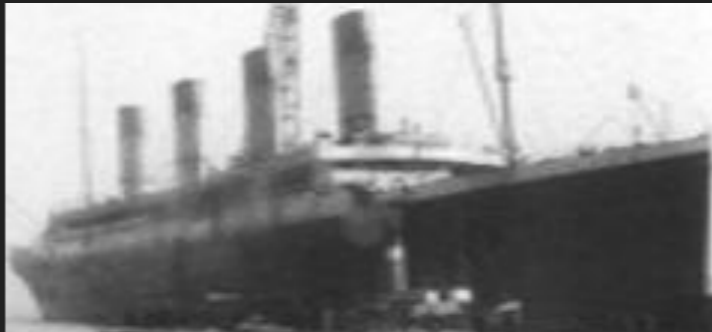


HOG

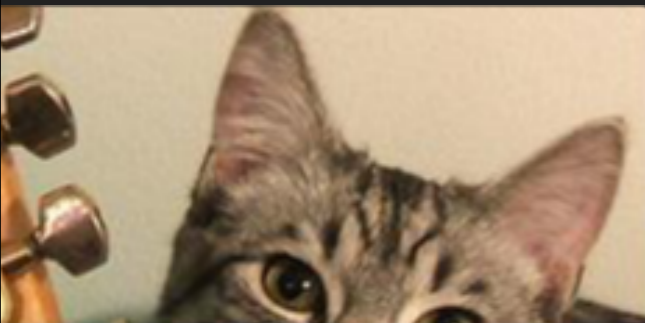
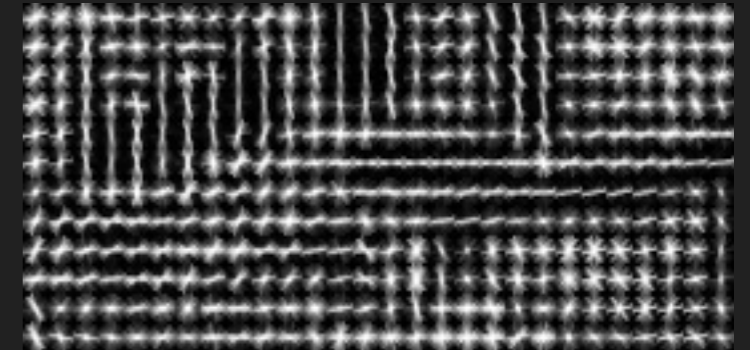


What information does HOG have?

Image



HOG



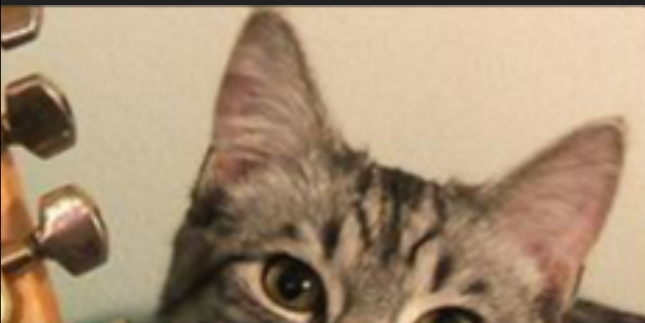
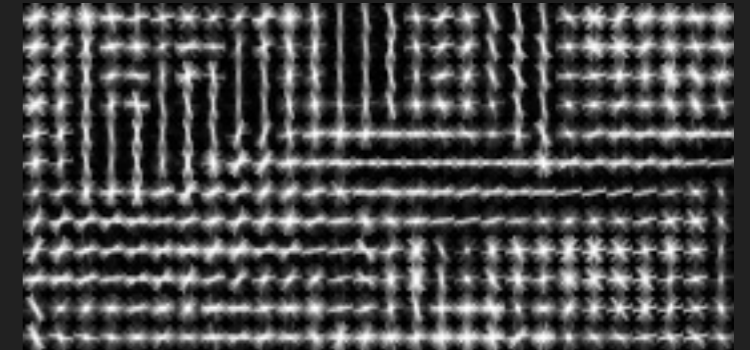
Nearest Neighbors

What information does HOG have?

Image



HOG



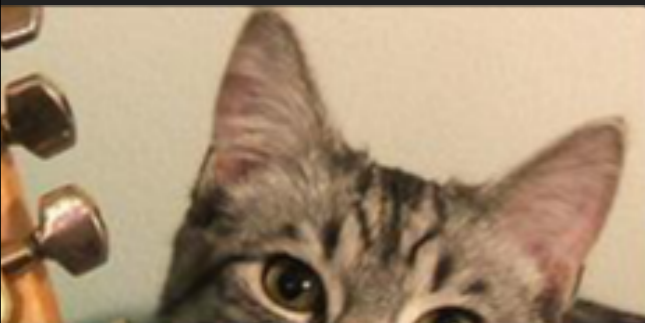
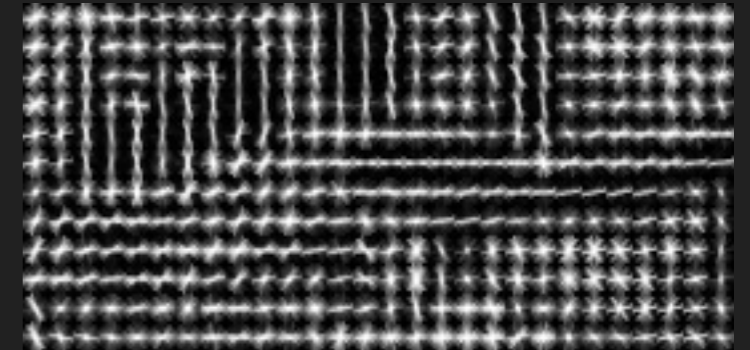
Nearest Neighbors

What information does HOG have?

Image



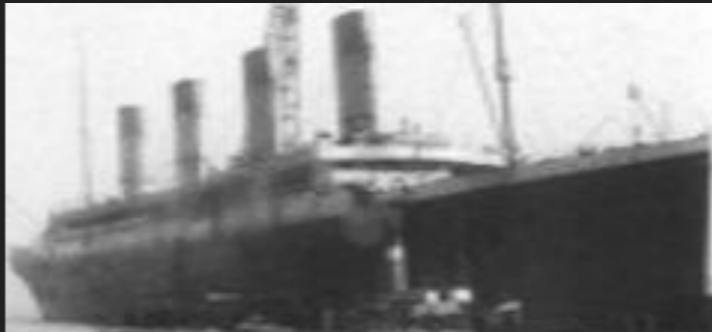
HOG



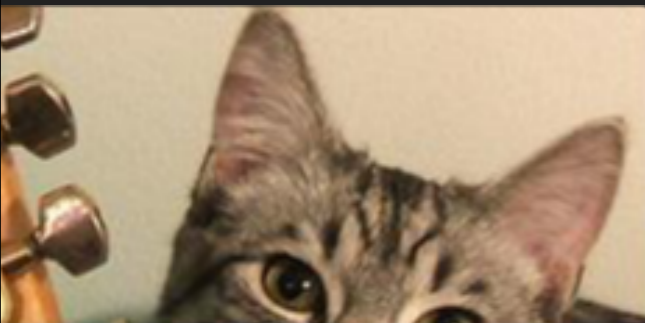
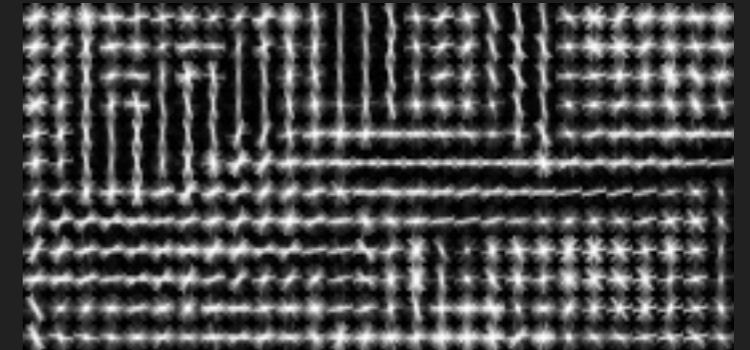
Nearest Neighbors

What information does HOG have?

Image



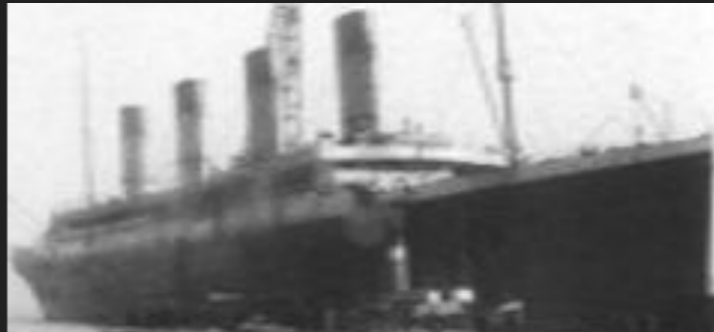
HOG



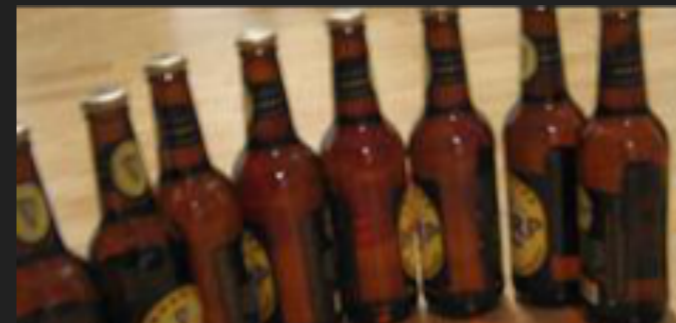
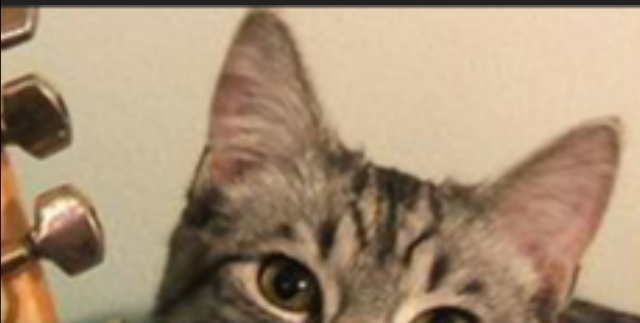
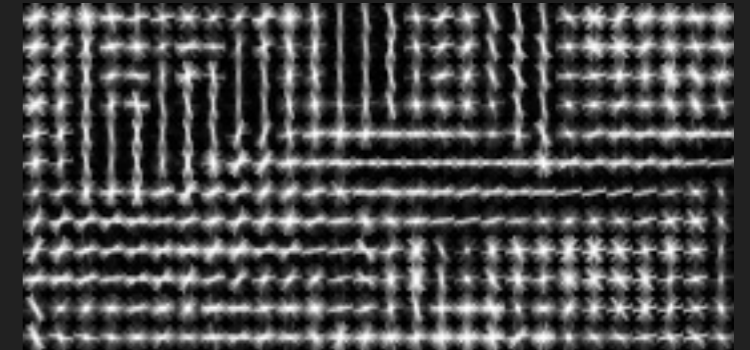
Nearest Neighbors

What information does HOG have?

Image

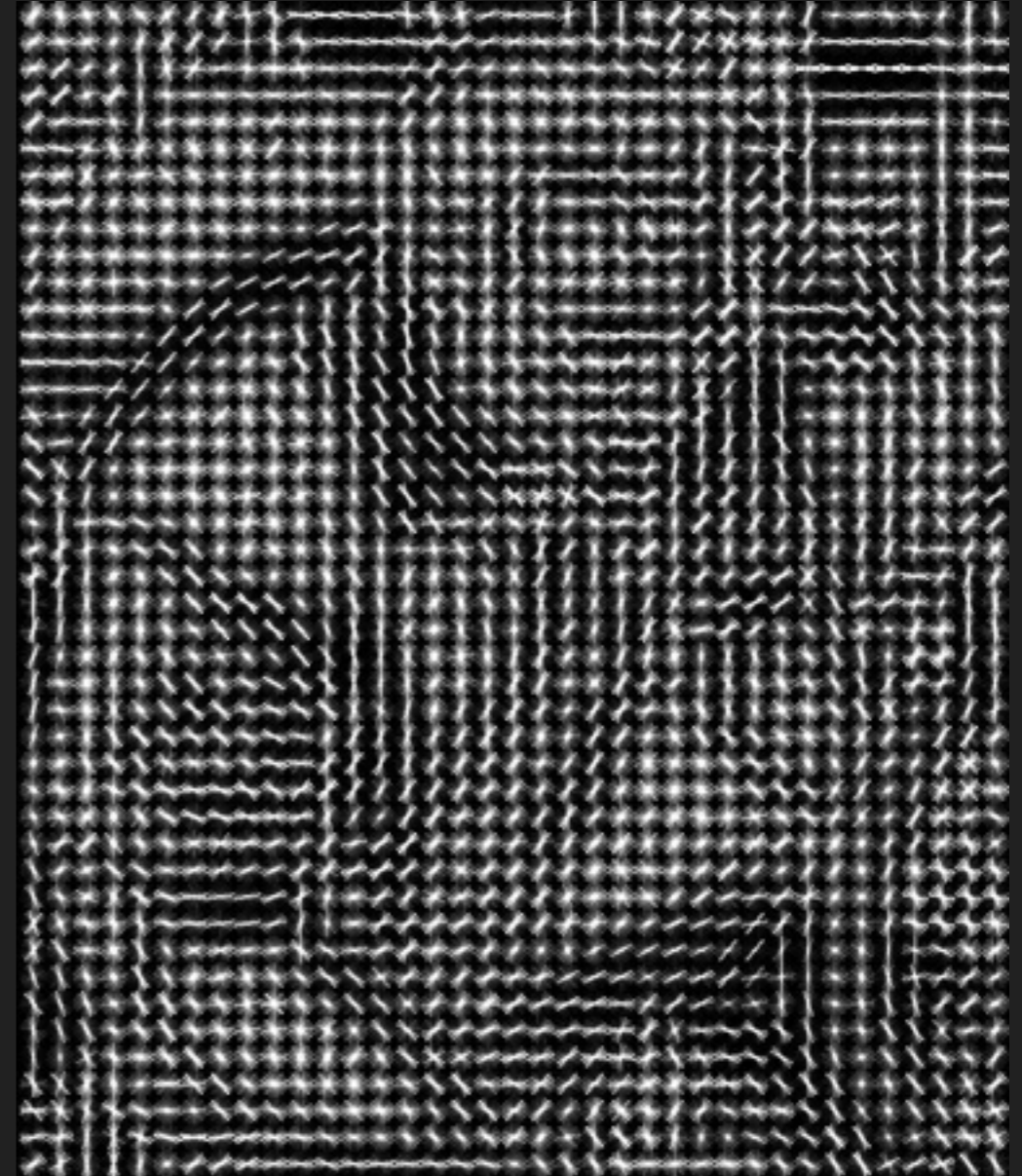


HOG

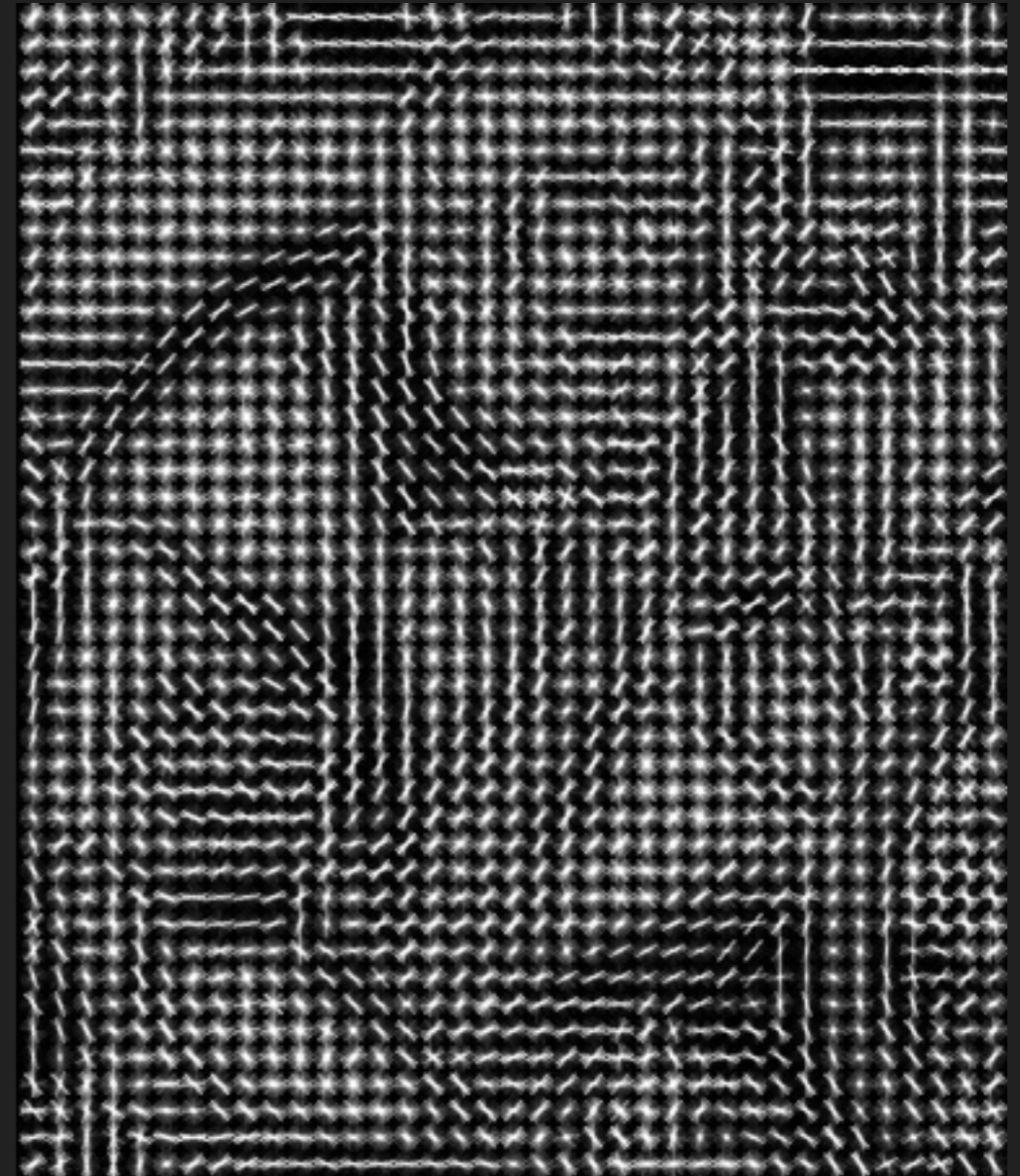


Nearest Neighbors

What information is lost?

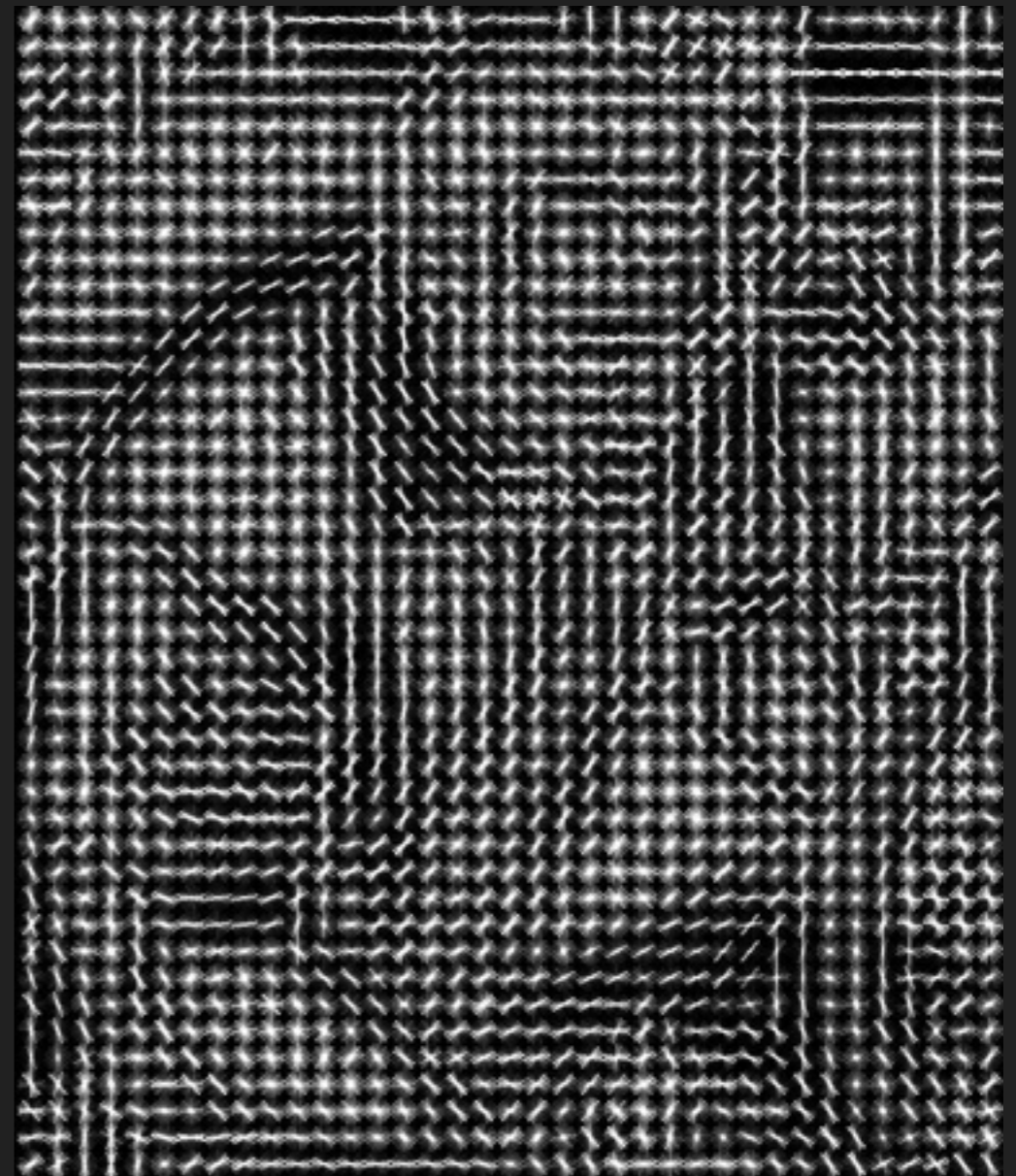


What information is lost?

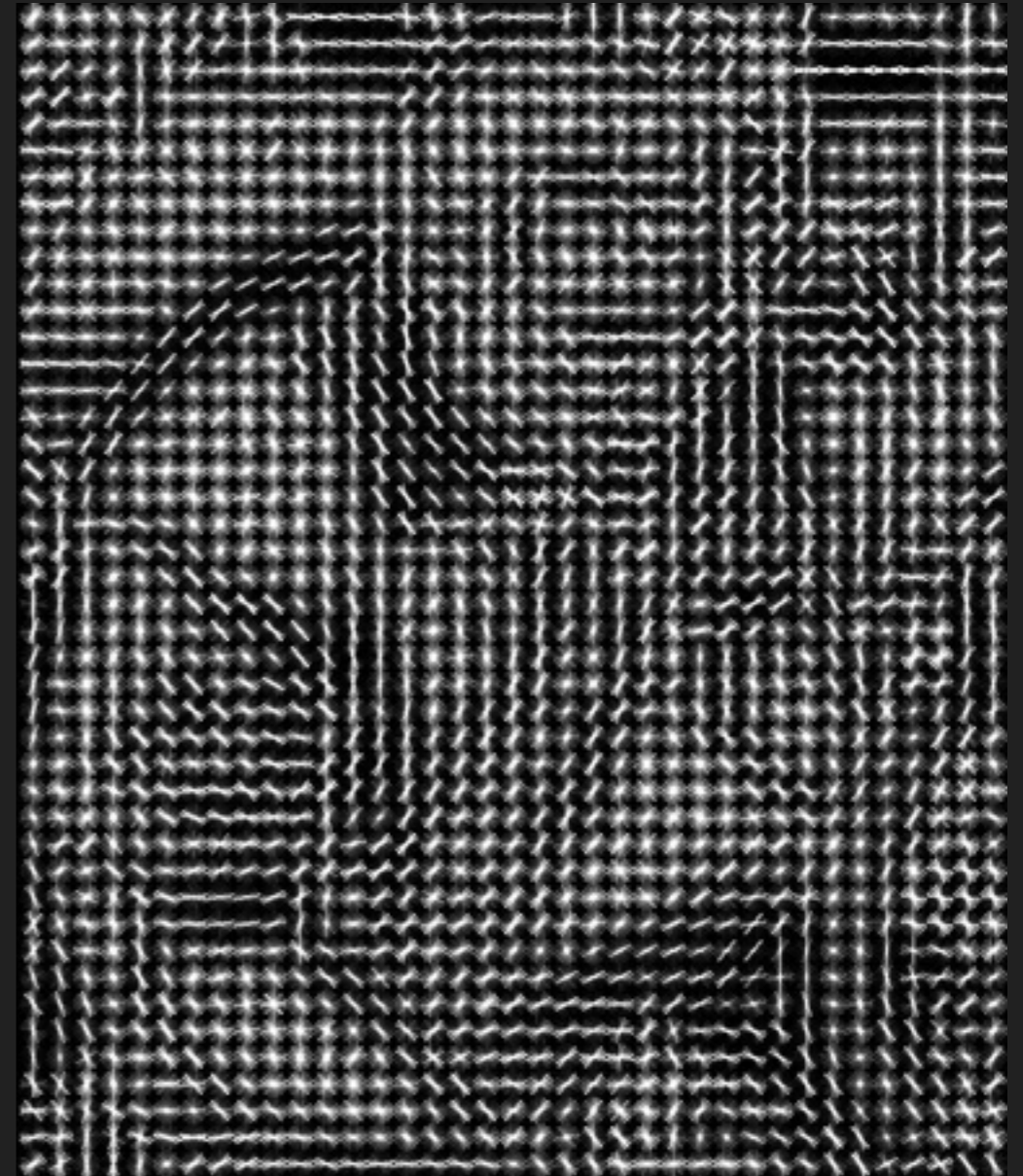


What information is lost?

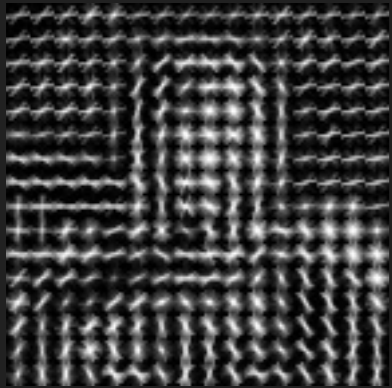
$$\min_{x \in \mathbb{R}^d} \|\phi(x) - y\|_2^2$$



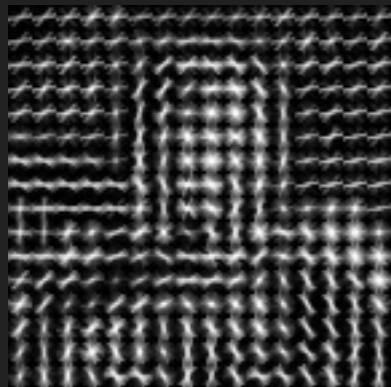
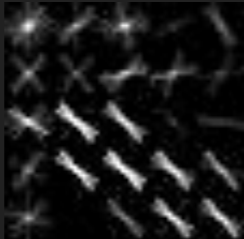
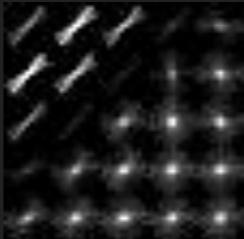
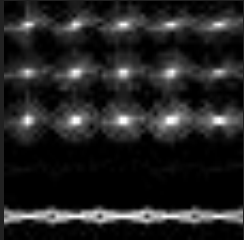
What information is lost?



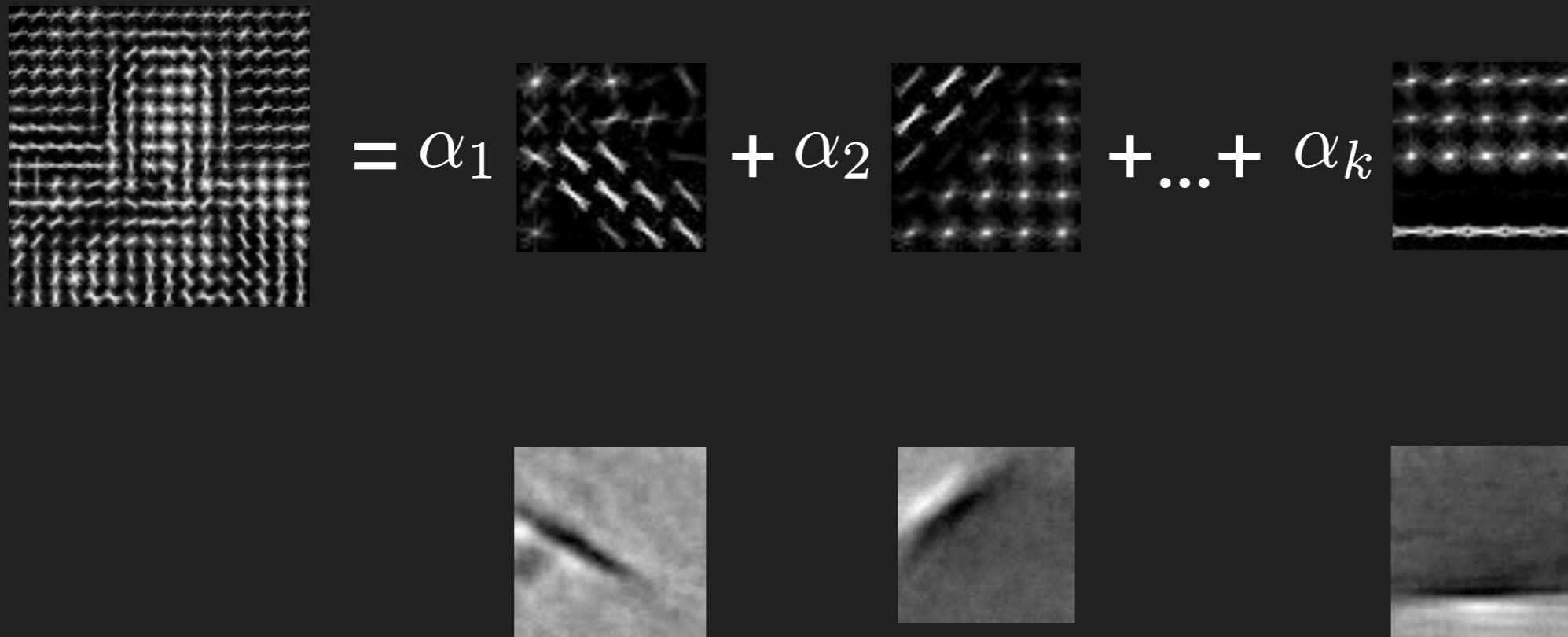
Method: Paired Dictionary



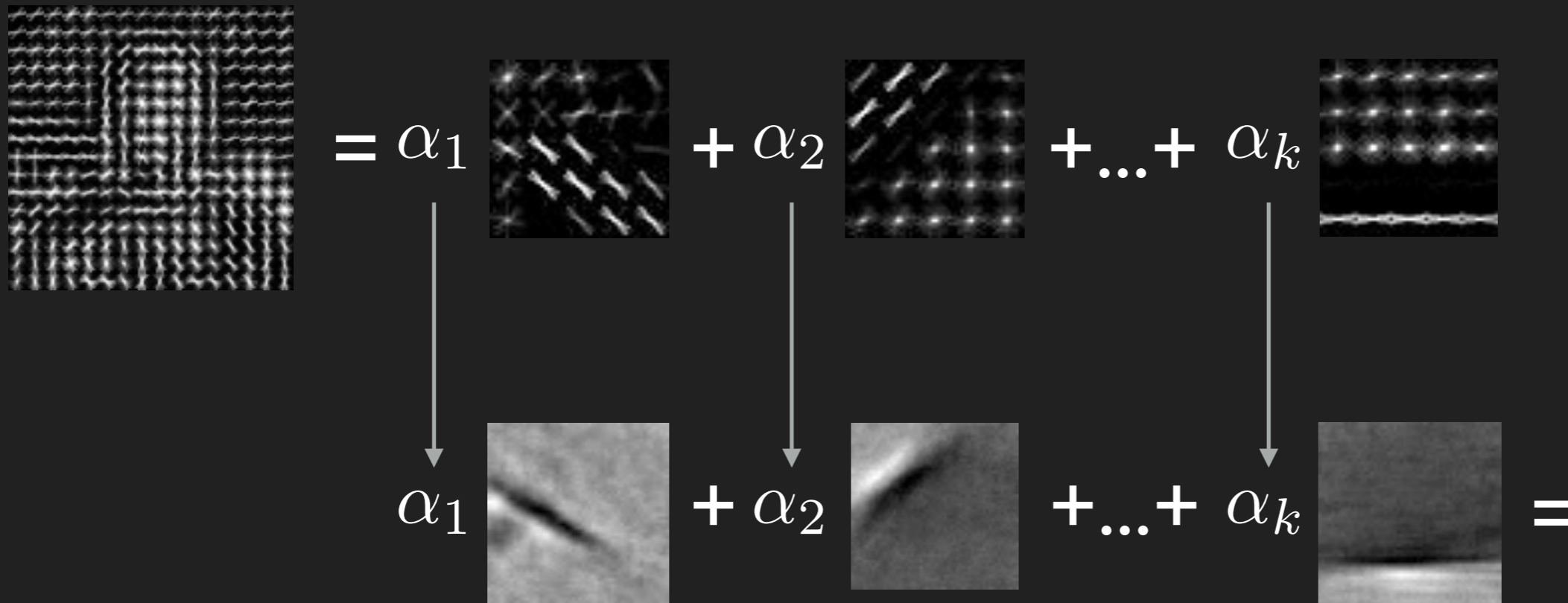
Method: Paired Dictionary


$$= \alpha_1$$

$$+ \alpha_2$$

$$+ \dots + \alpha_k$$


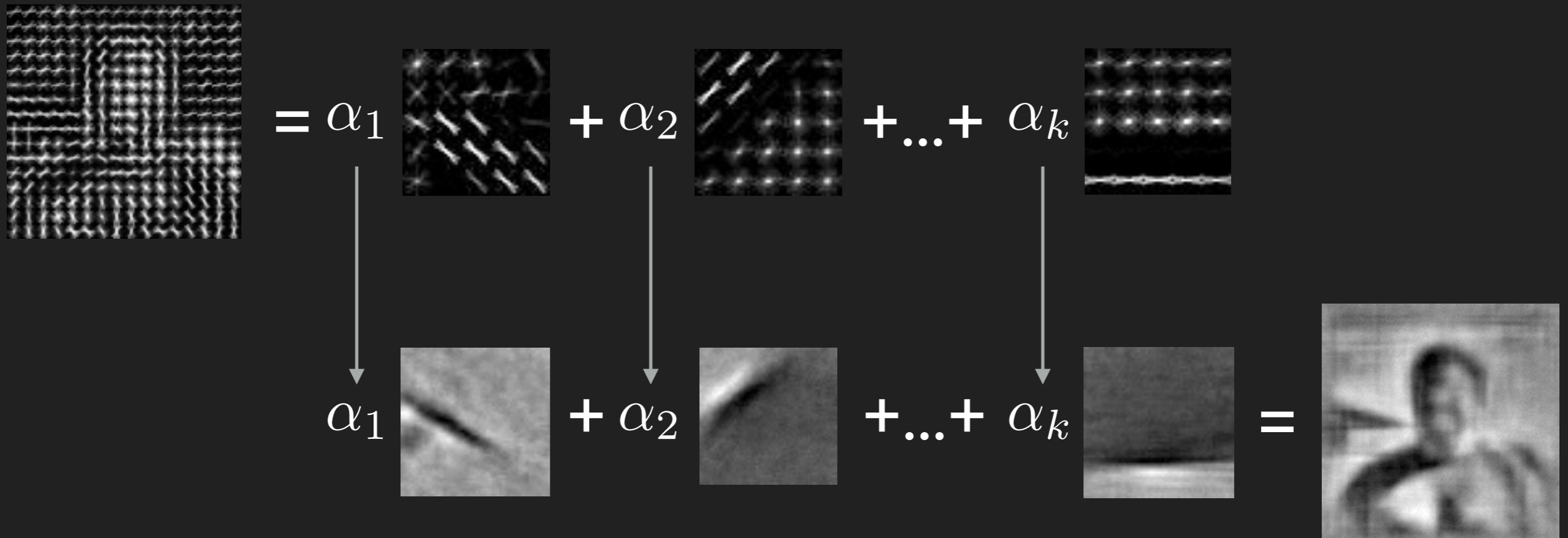
Method: Paired Dictionary



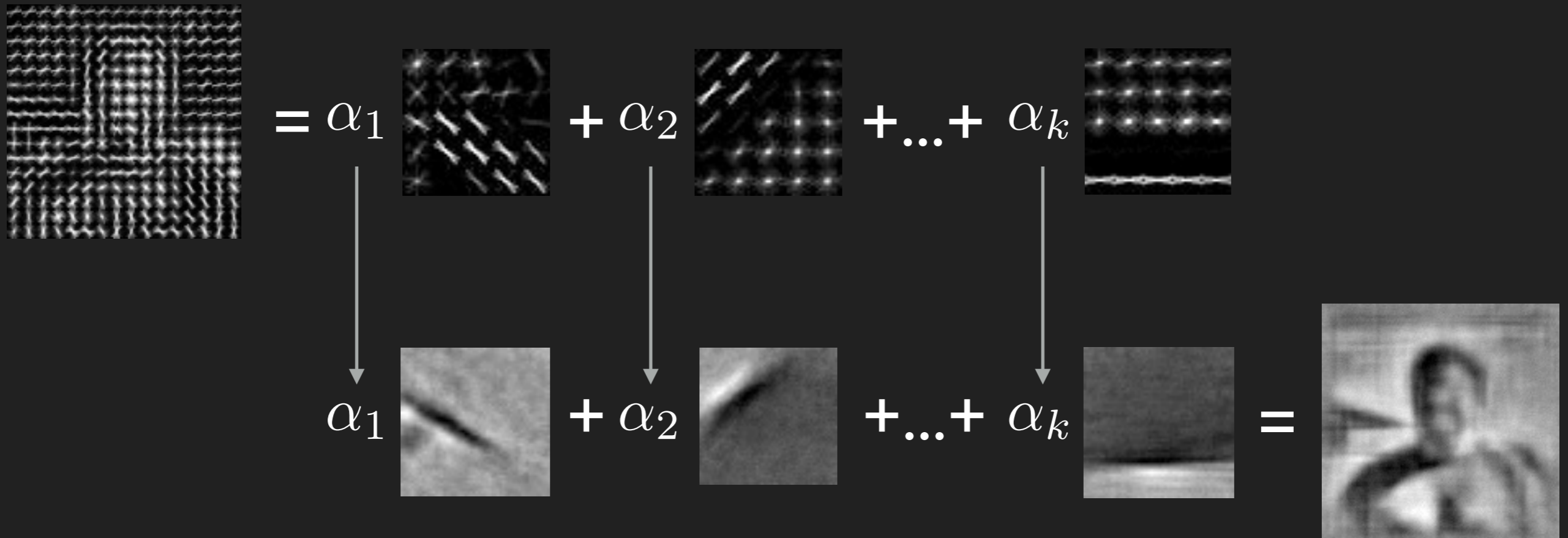
Method: Paired Dictionary



Method: Paired Dictionary

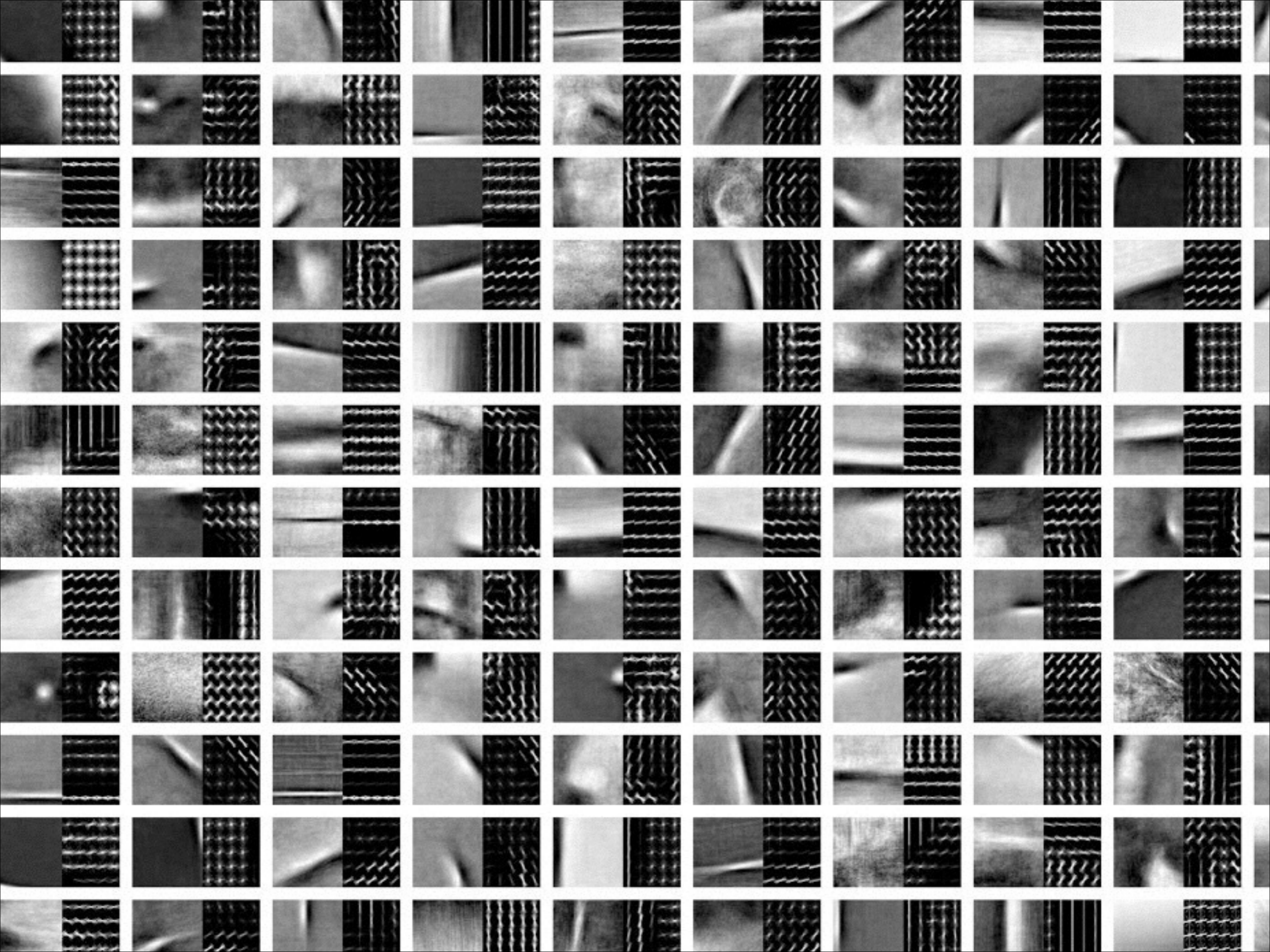


Method: Paired Dictionary



$$\hat{y} = f(x) = V\hat{\alpha}$$

$$\text{where } \hat{\alpha} = \arg \min_{\alpha} \|x - U\alpha\|_2^2 \quad \text{s.t.} \quad \|\alpha\|_1 \leq \lambda$$



Paired Dictionary Learning

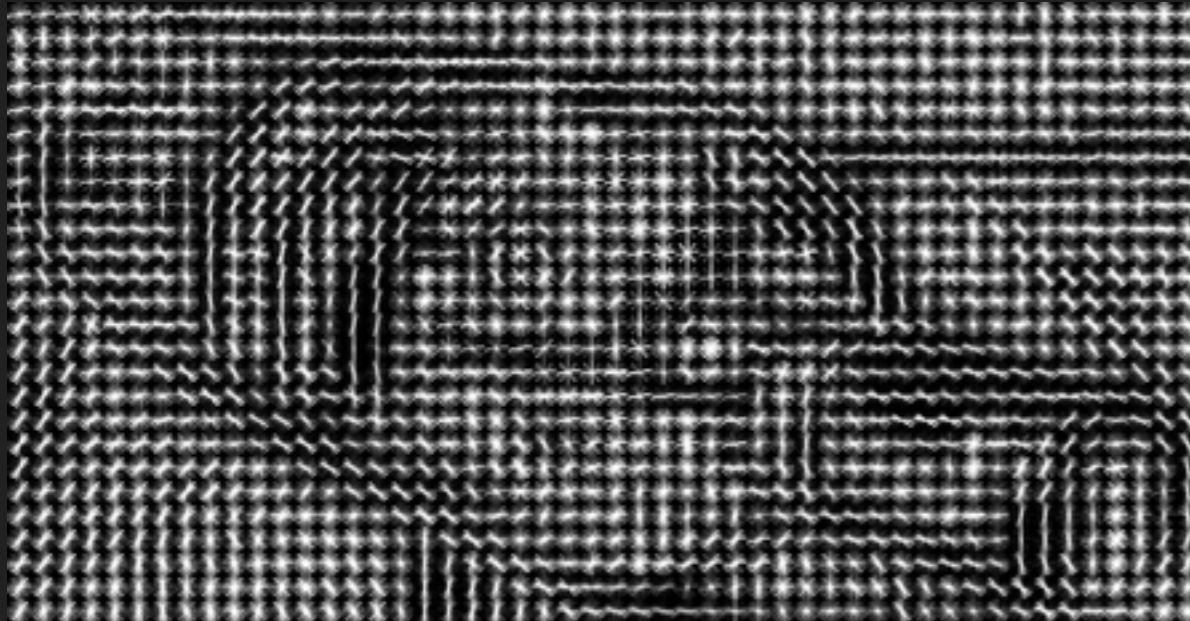
$$\arg \min_{U, V, \alpha} \sum_{i=1}^N \|x_i - U\alpha_i\|_2^2 + \|y_i - V\alpha_i\|_2^2$$

s.t. $\|\alpha_i\|_1 \leq \lambda, \|U\|_2^2 \leq \gamma_1, \|V\|_2^2 \leq \gamma_2$

Just sparse coding!
(Optimize using off the shelf solvers)

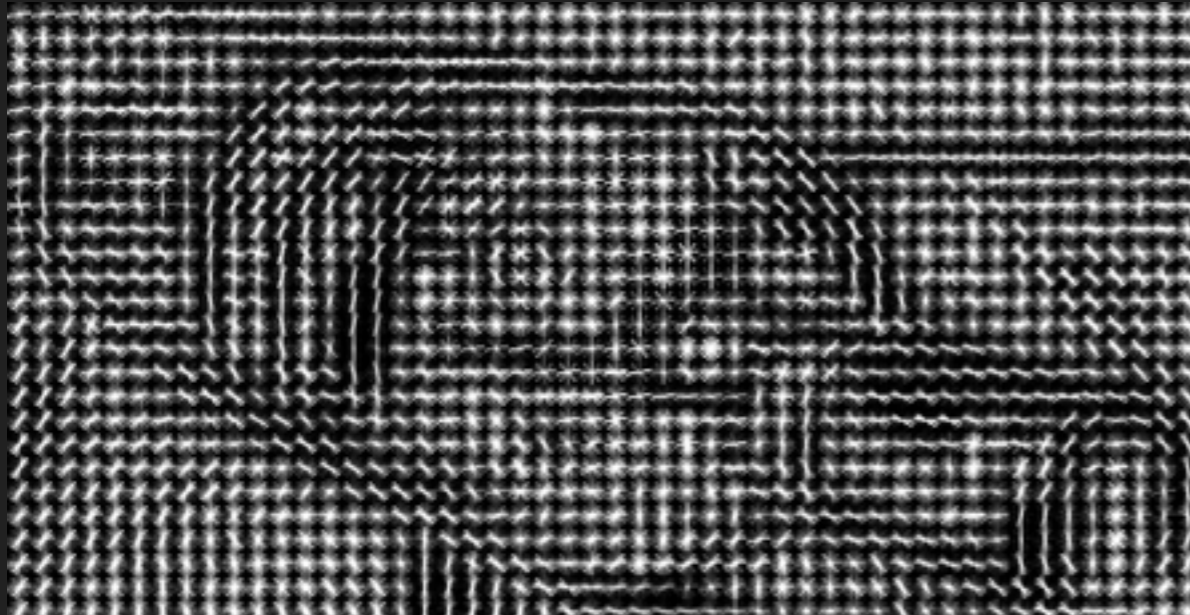


A microscope
to view HOG





A microscope
to view HOG



2x more intuitive



Human Vision

vs



HOG Vision



Human Vision

VS



HOG Vision



Human Vision

VS



HOG Vision



Human Vision

VS



HOG Vision



Human Vision

VS



HOG Vision



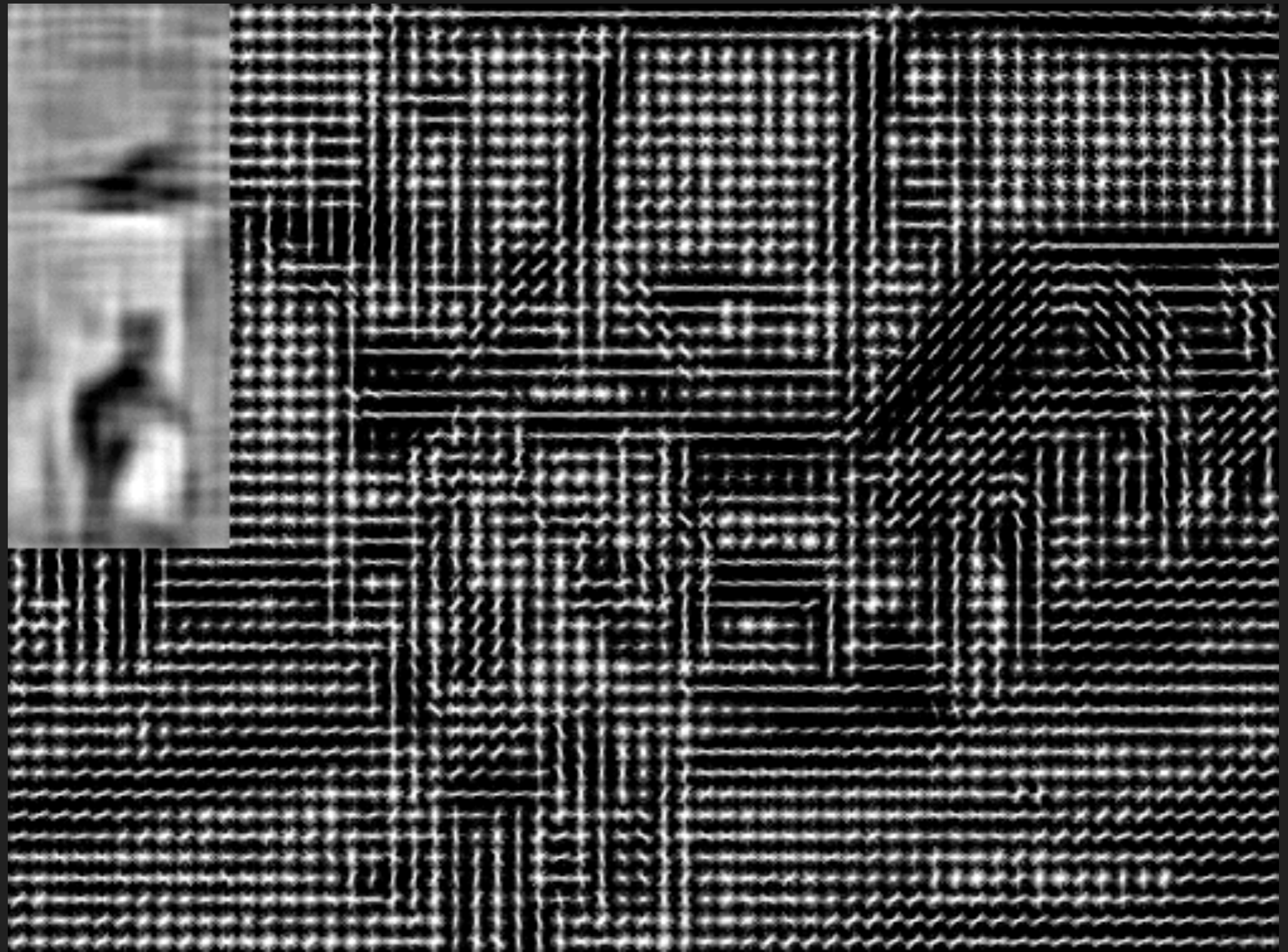
Car

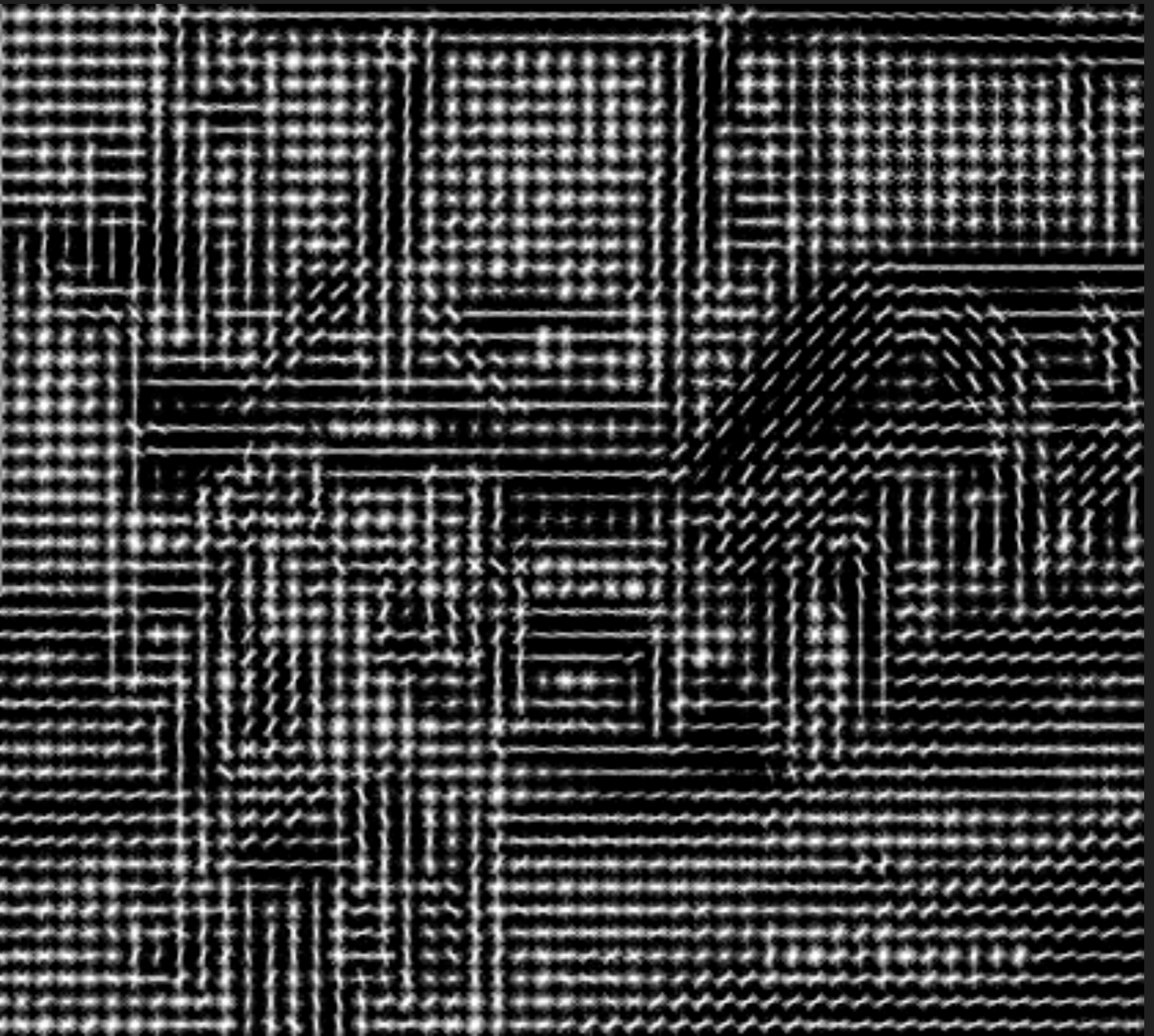
















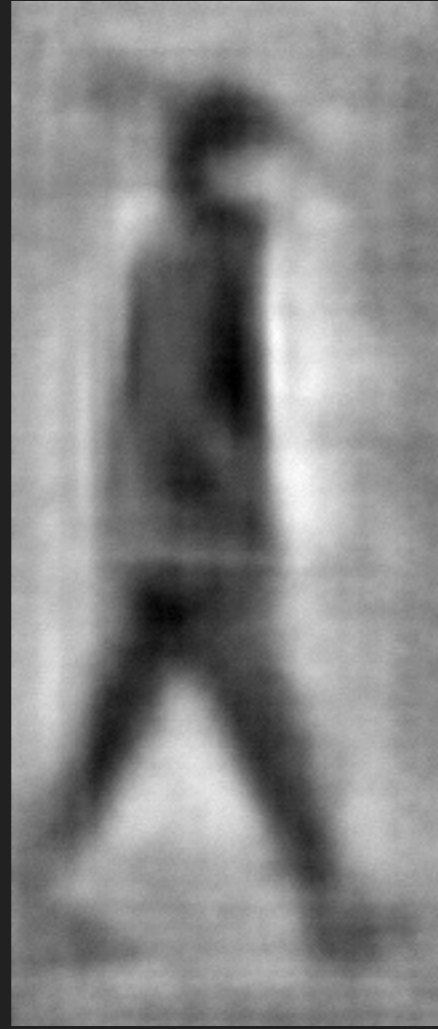
DEC 15 2006

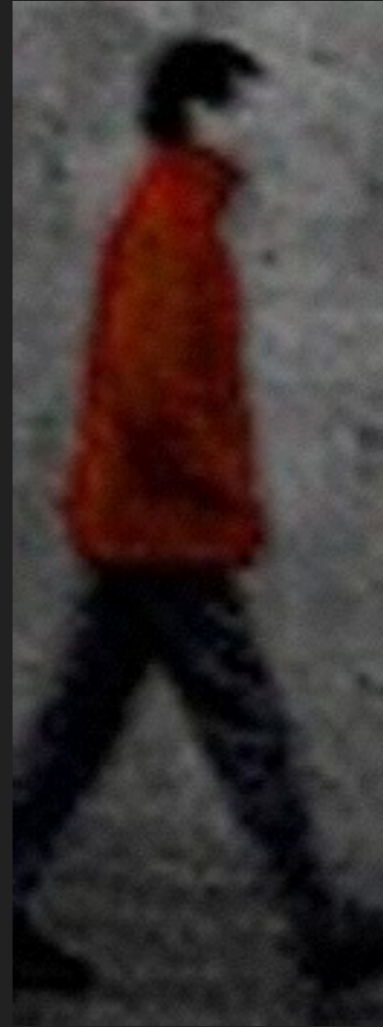
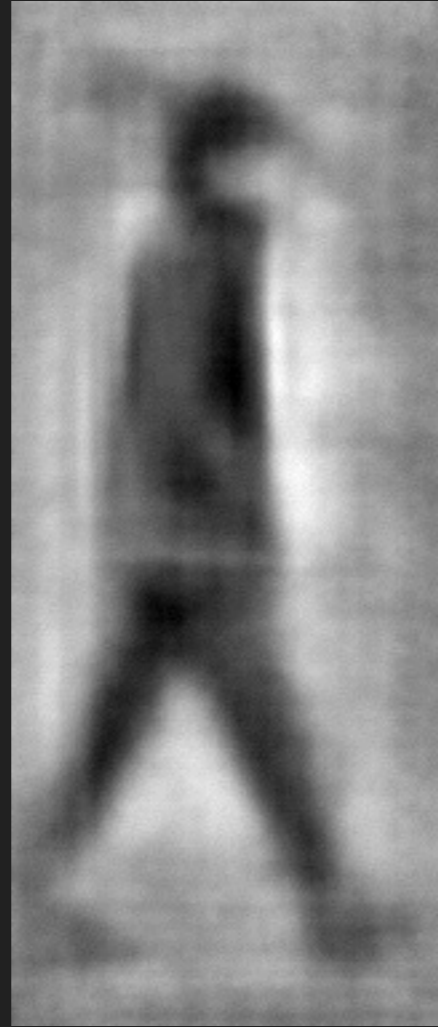
The HOGgles Challenge

The HOGgles Challenge



Clap your hands when you see a person





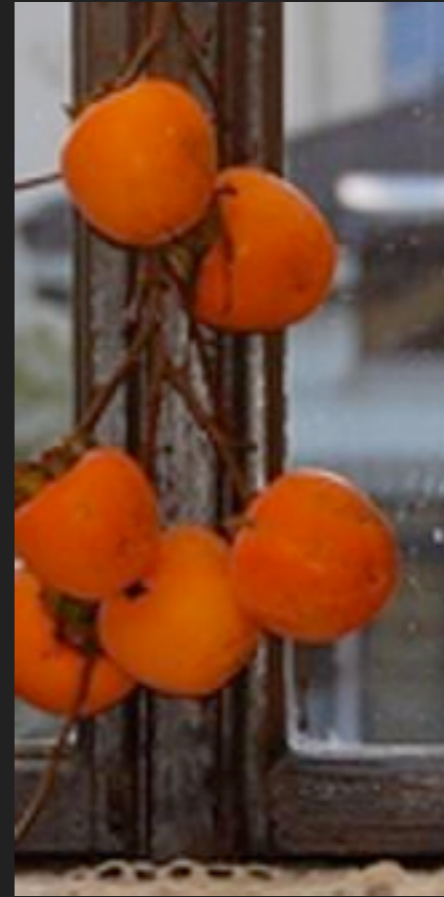








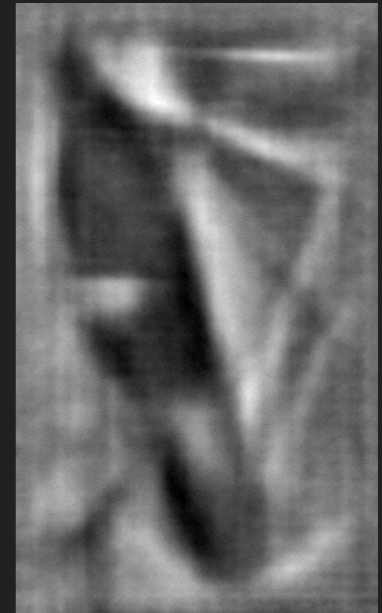
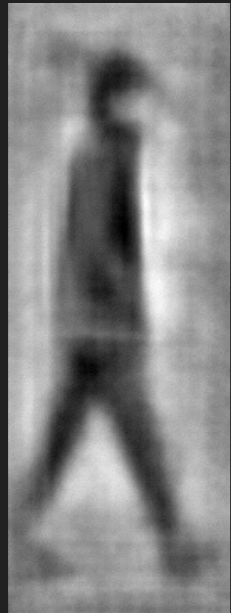




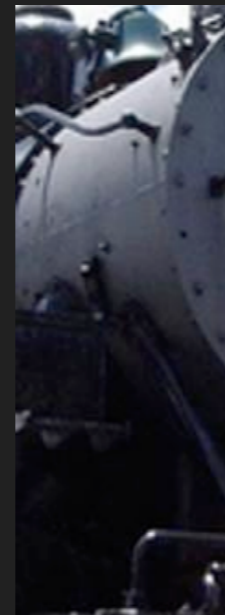
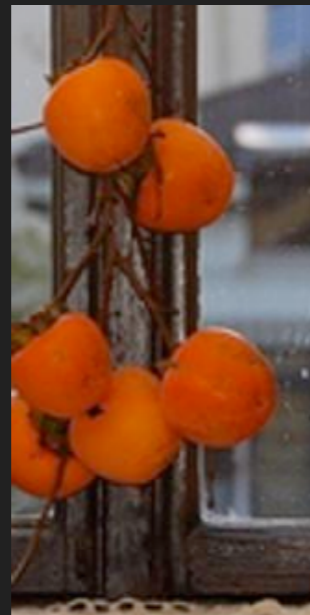
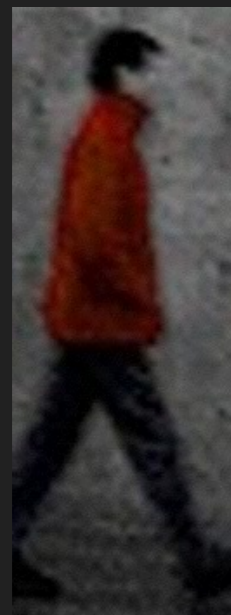
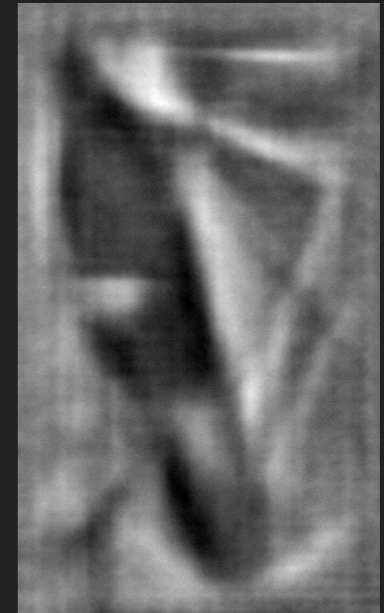
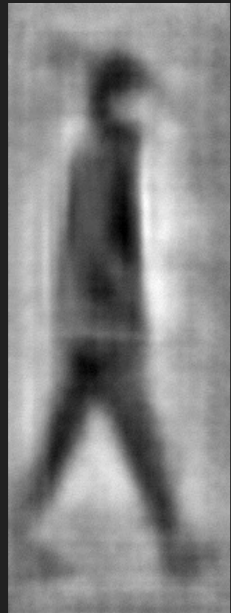




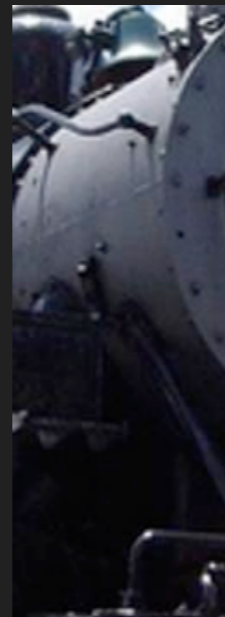
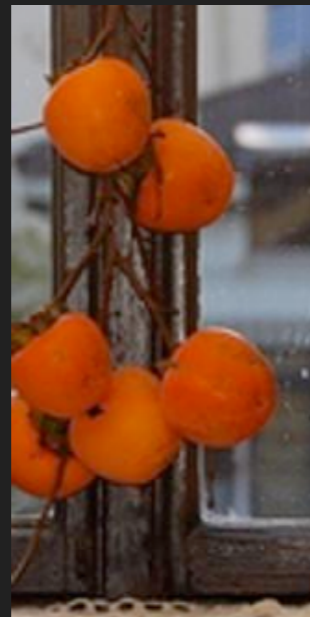
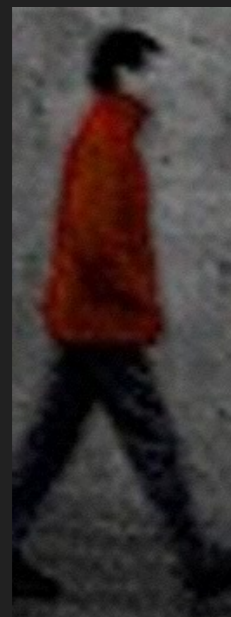
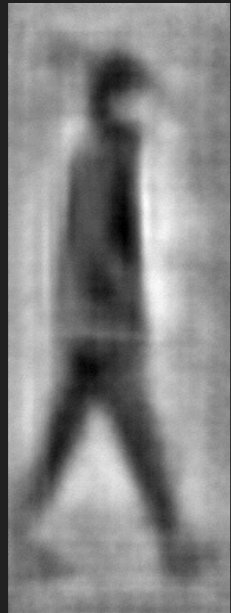
The HOGgles Challenge



The HOGgles Challenge



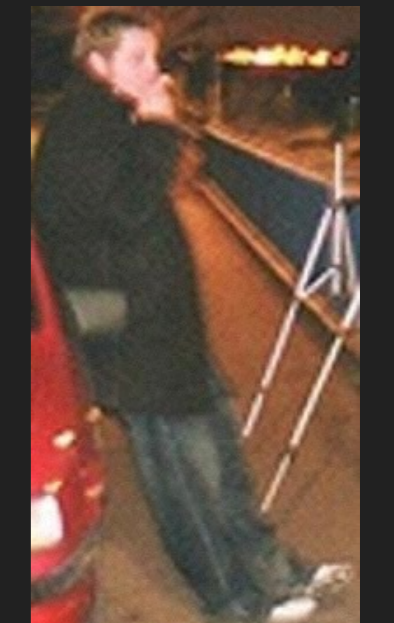
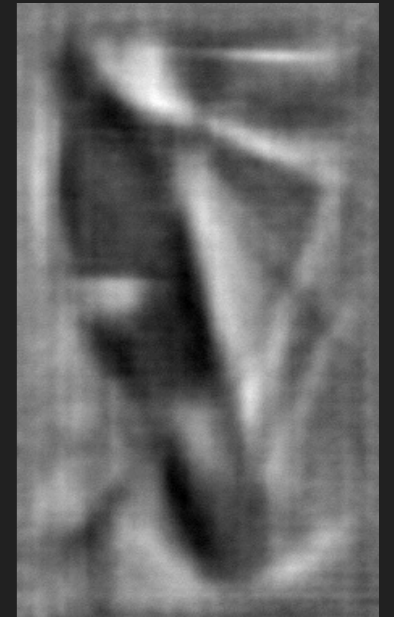
The HOGgles Challenge



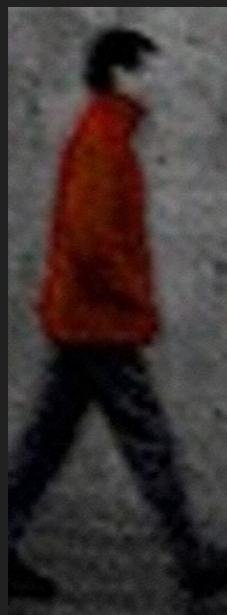
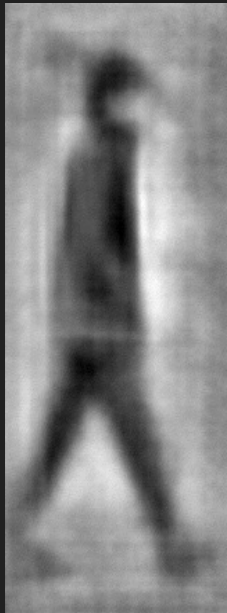
Humans detect
&
DPMs detect

The HOGgles Challenge

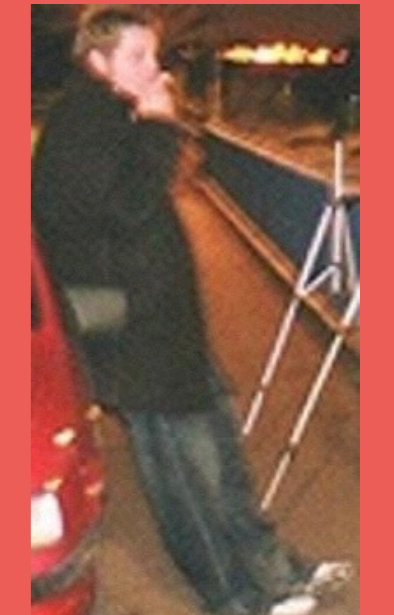
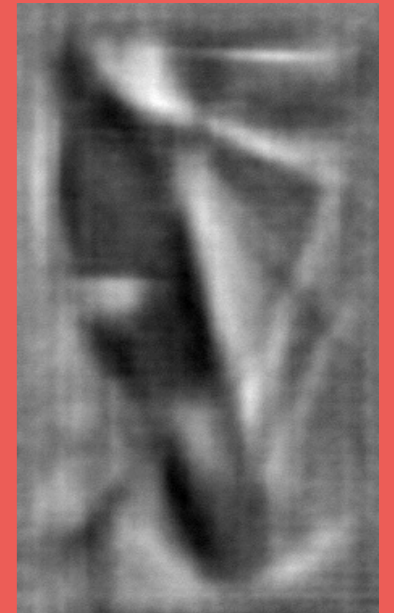
Humans miss
&
DPM miss



The HOGgles Challenge



**Common
False Alarms**



**Common
Missed Detections**

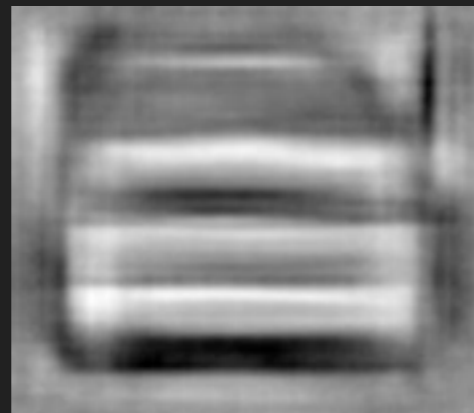
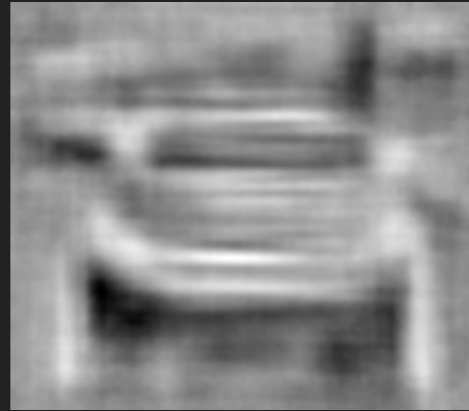
Chair Detections



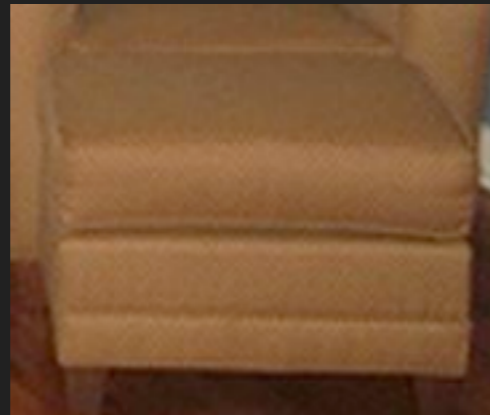
Chair Detections



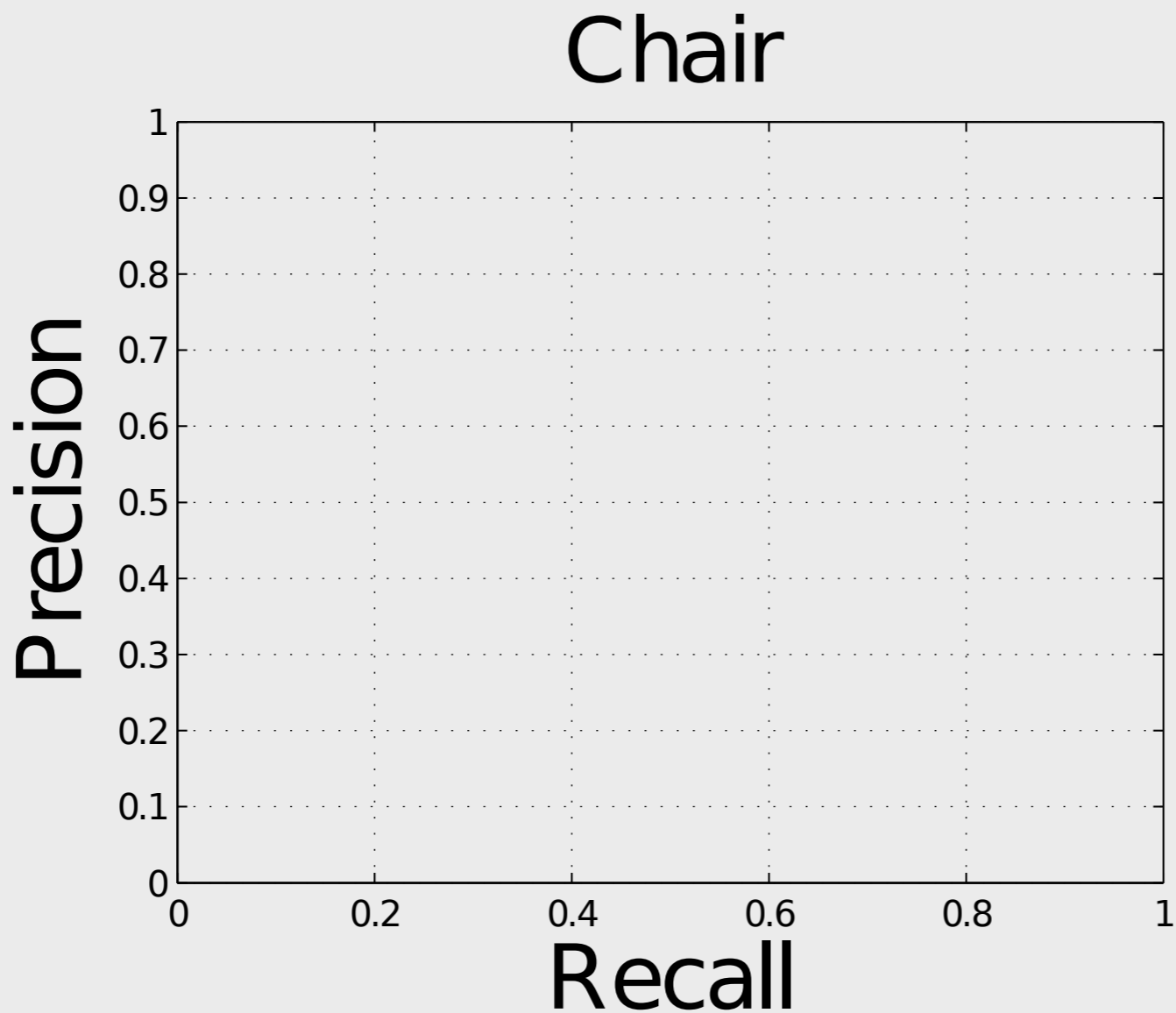
Car Detections



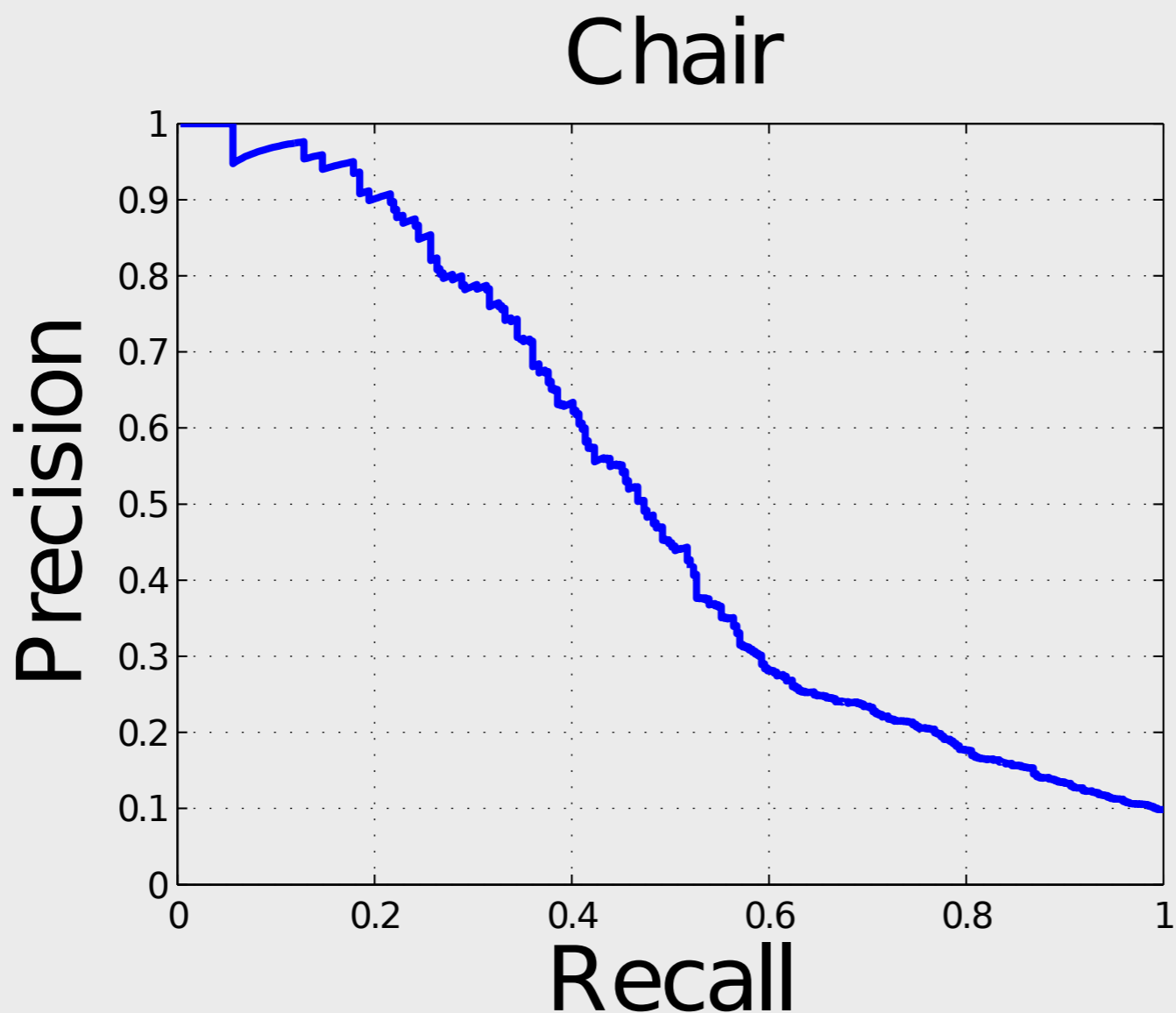
Car Detections



HOG+Human Detector

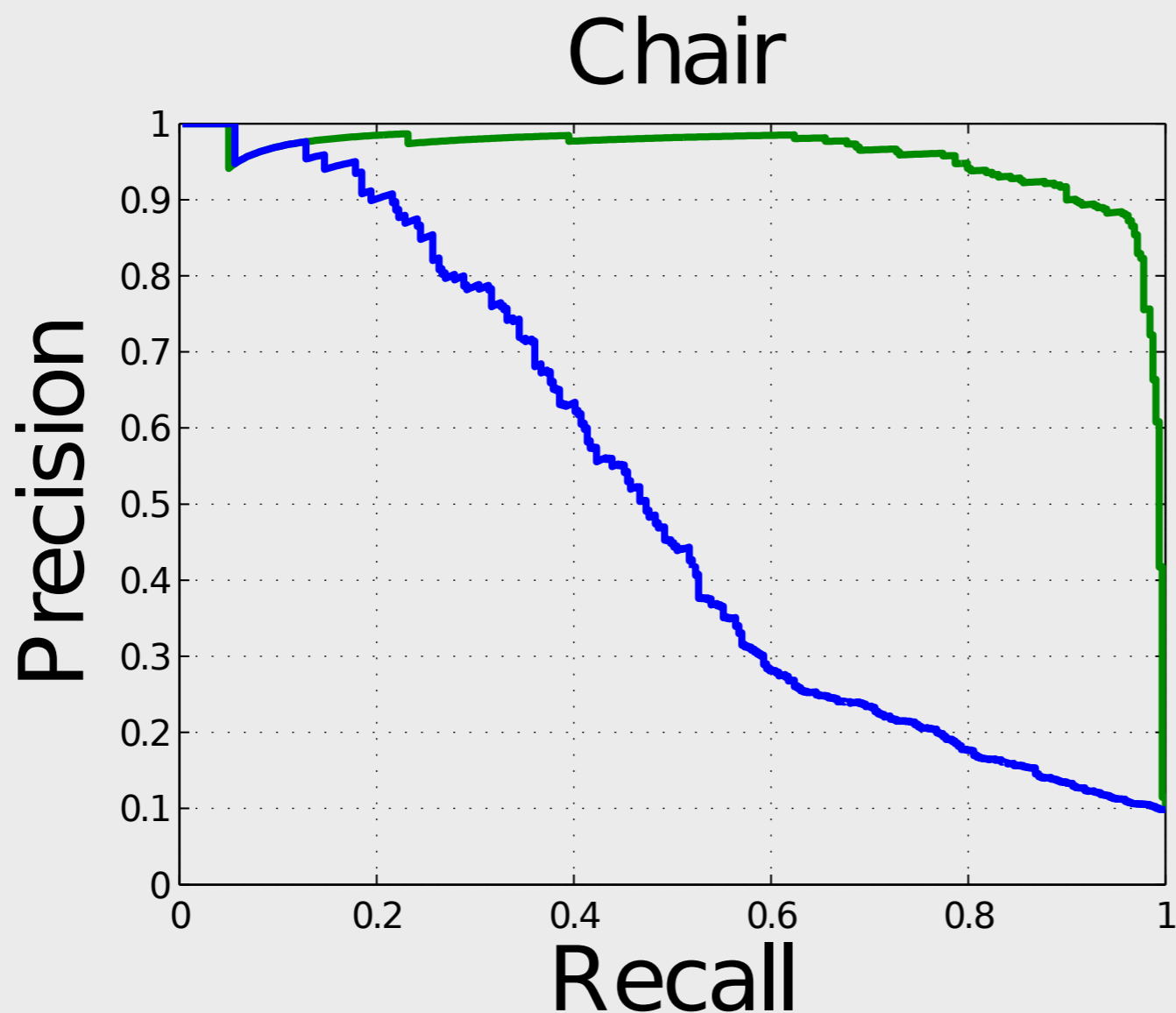


HOG+Human Detector



HOG+DPM

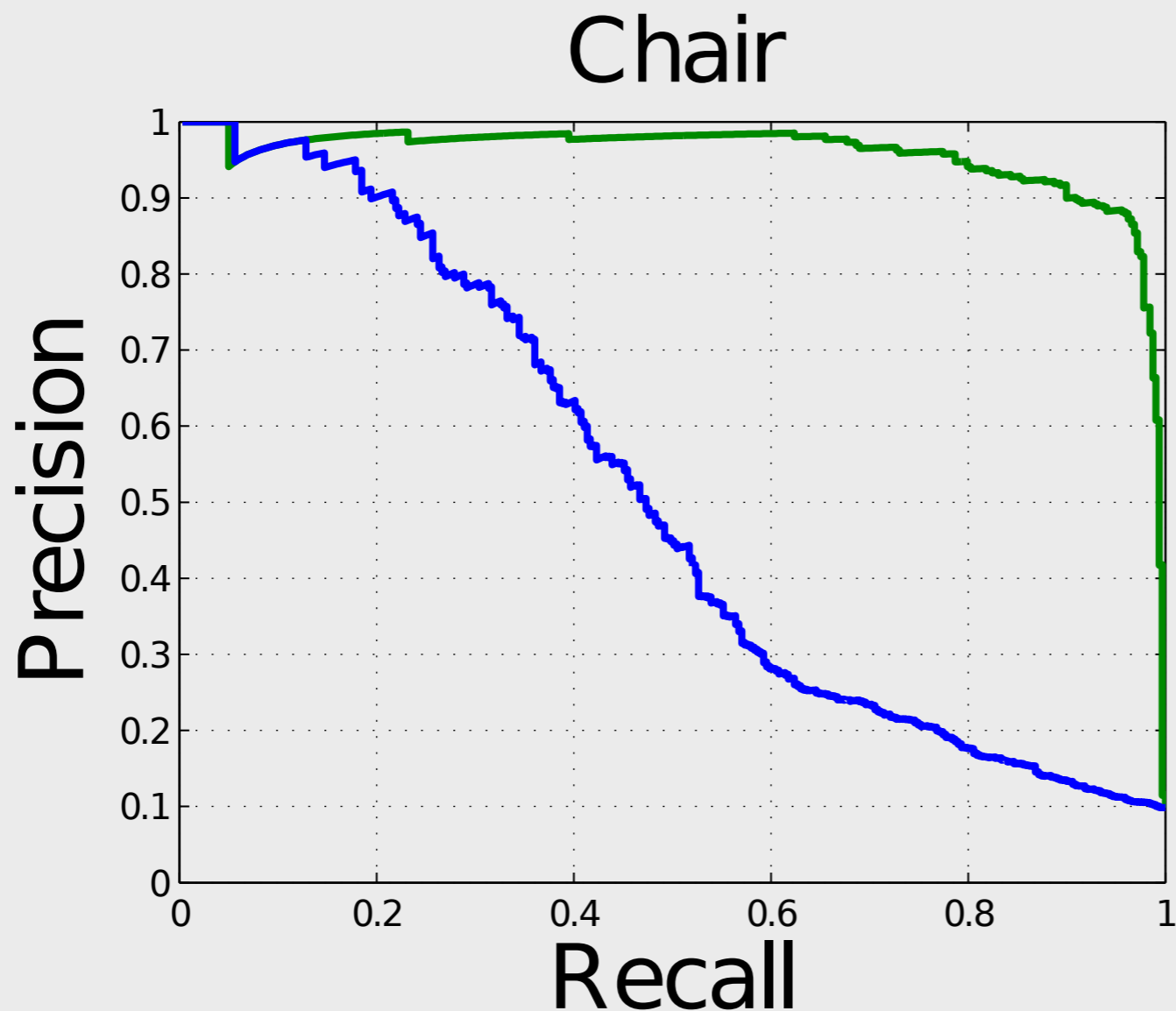
HOG+Human Detector



HOG+DPM

RGB+Human

HOG+Human Detector

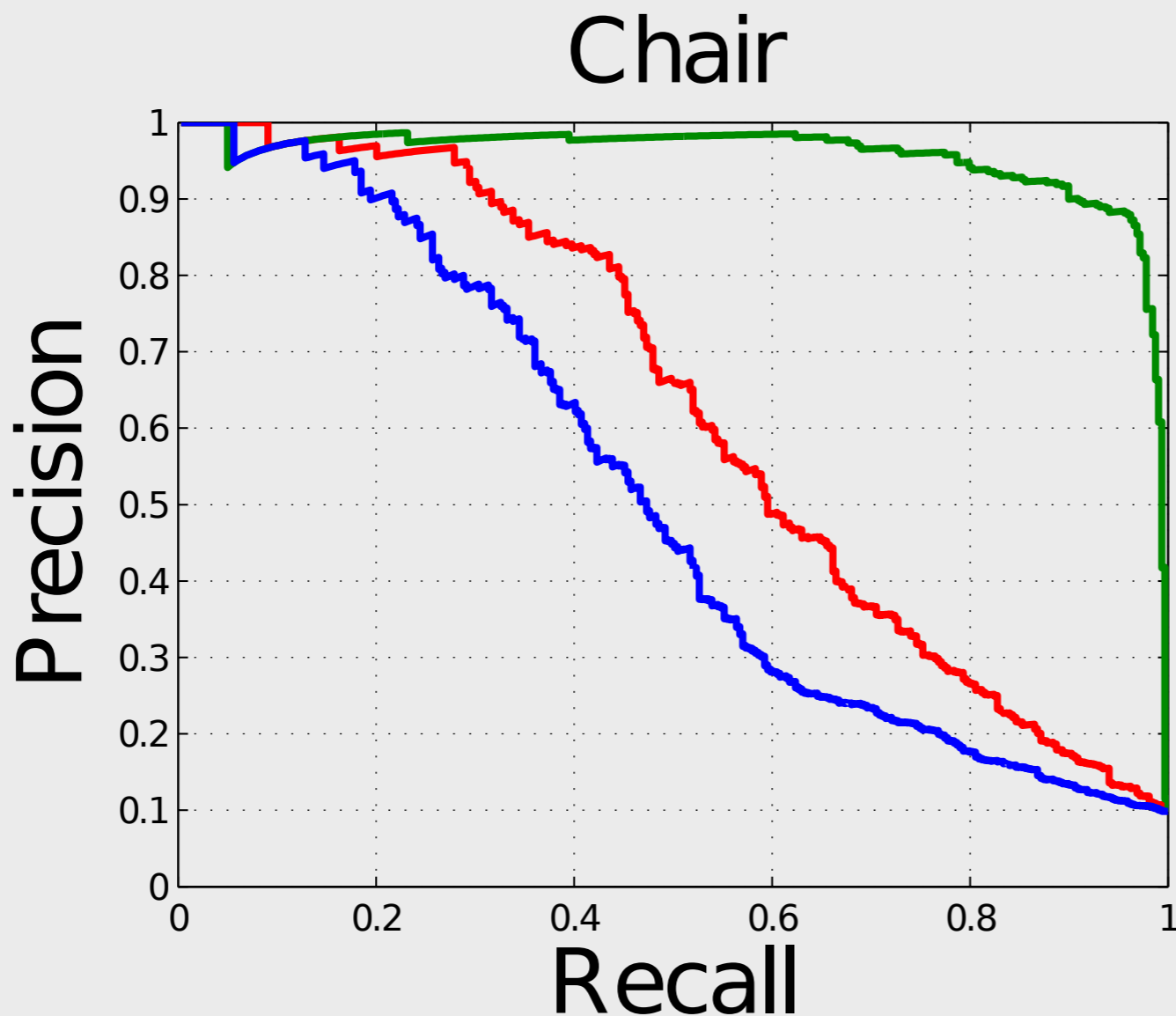


HOG+DPM

RGB+Human

HOG+Human

HOG+Human Detector

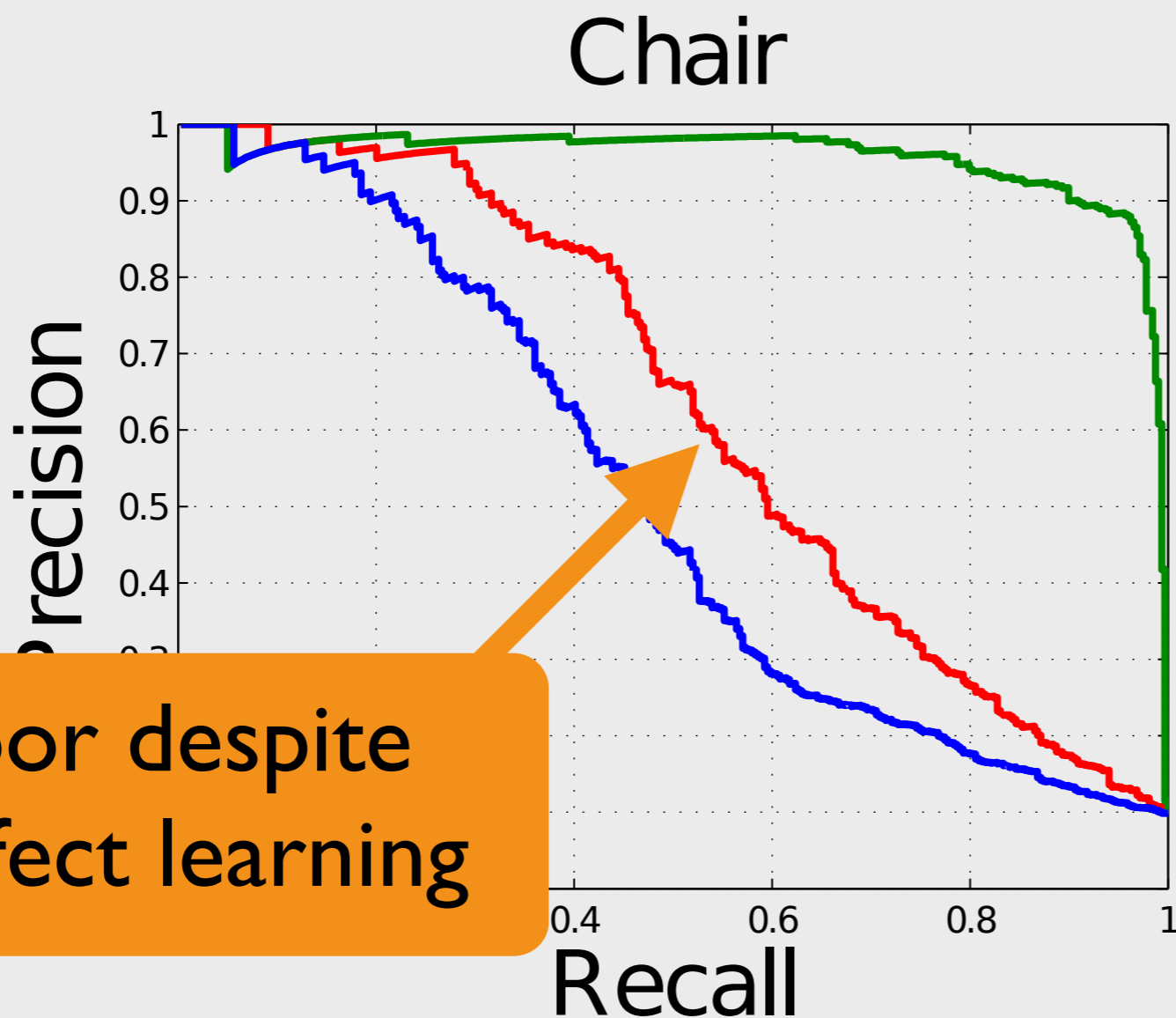


HOG+DPM

RGB+Human

HOG+Human

HOG+Human Detector



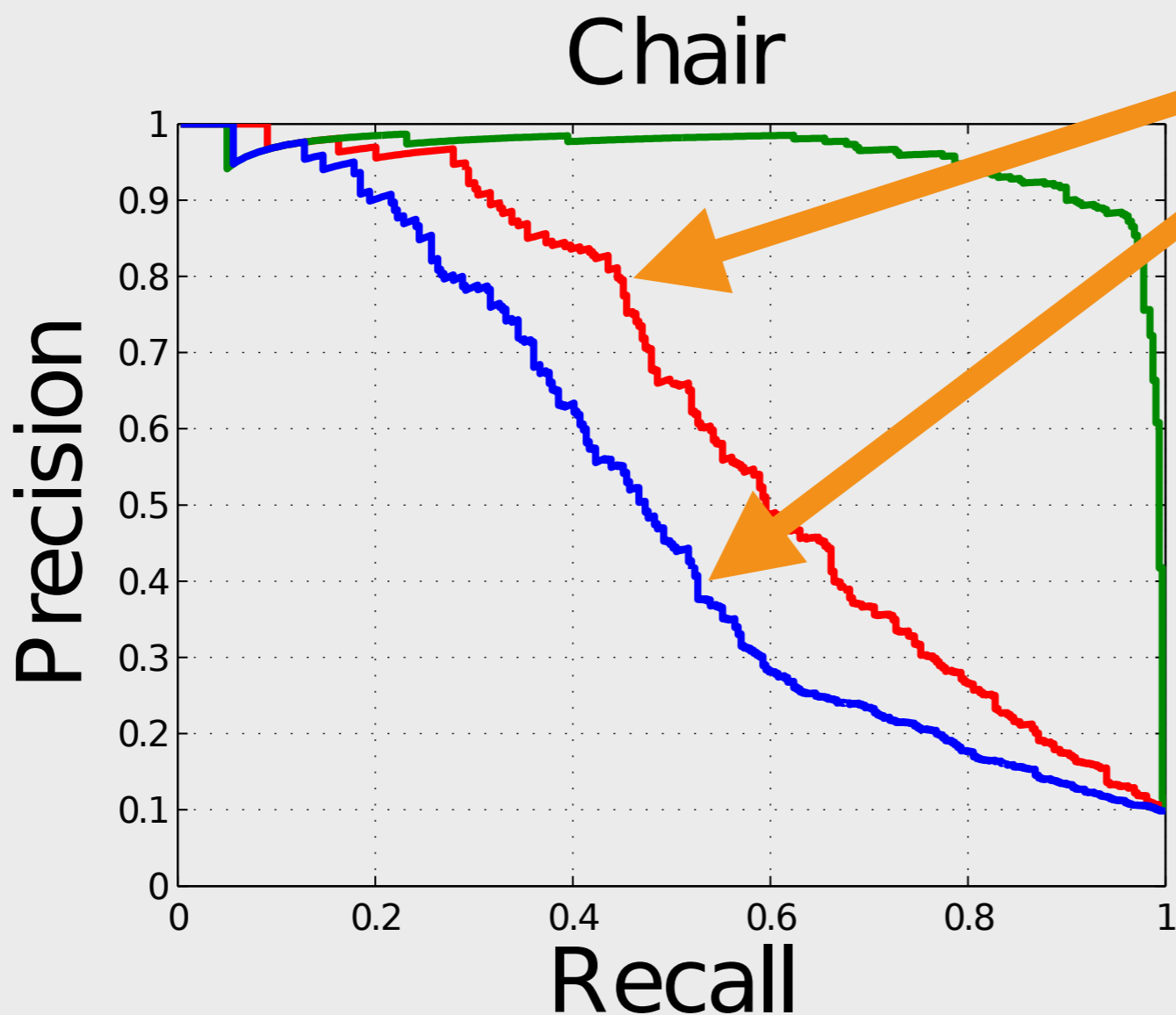
Poor despite
perfect learning

HOG+DPM

RGB+Human

HOG+Human

HOG+Human Detector



0.5 correlation coefficient

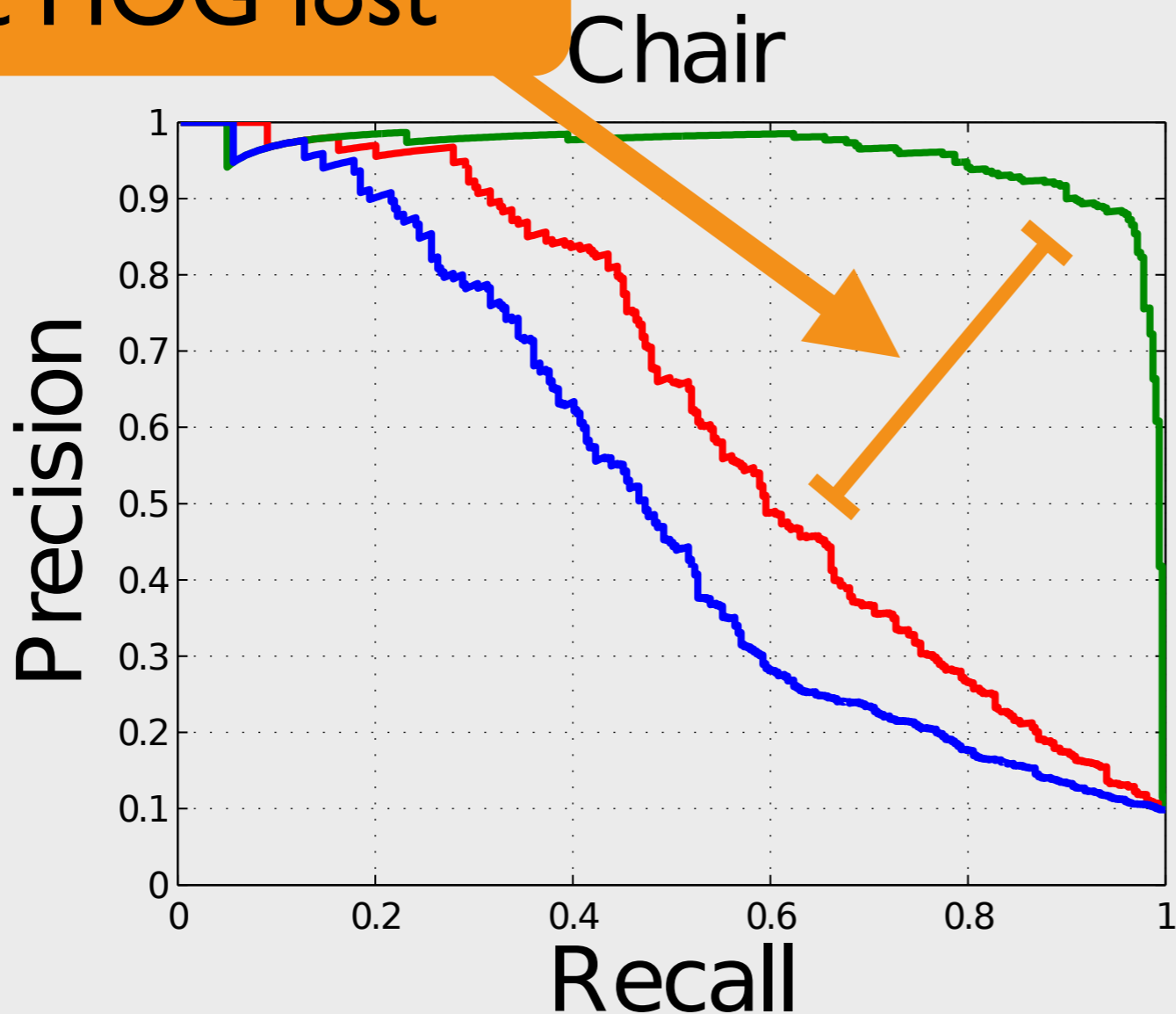
HOG+DPM

RGB+Human

HOG+Human

HOG+Human Detector

Amount of “juice”
that HOG lost

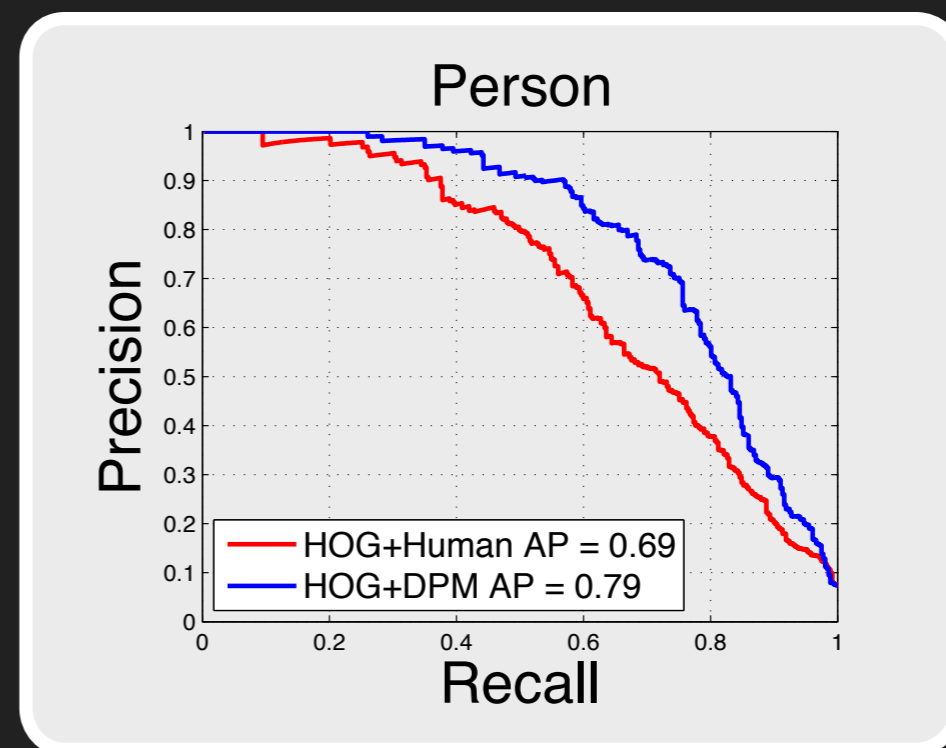
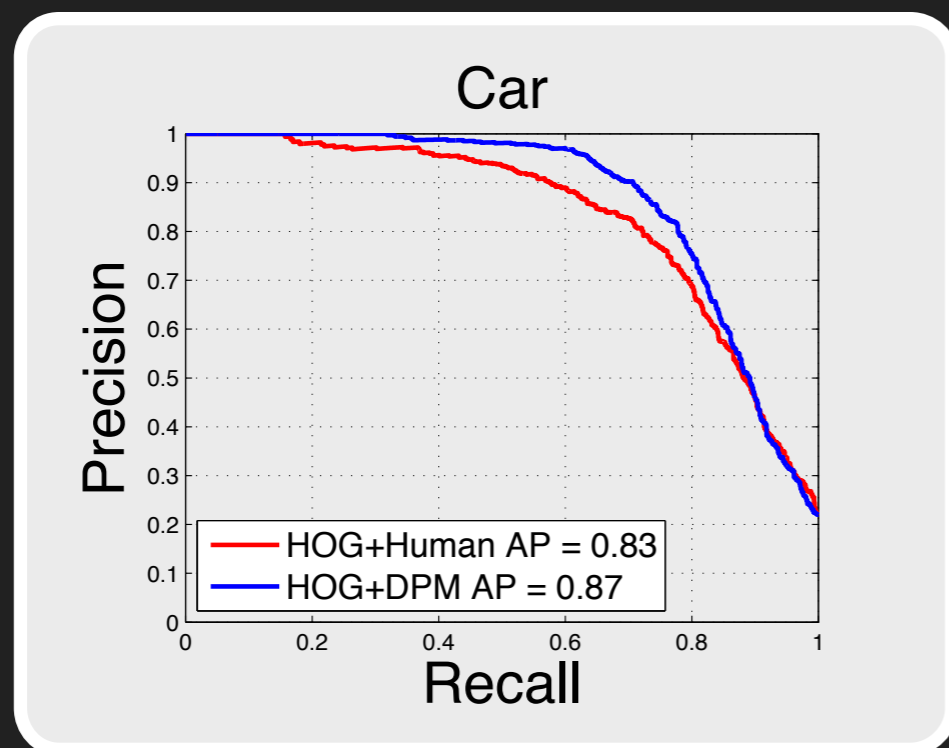
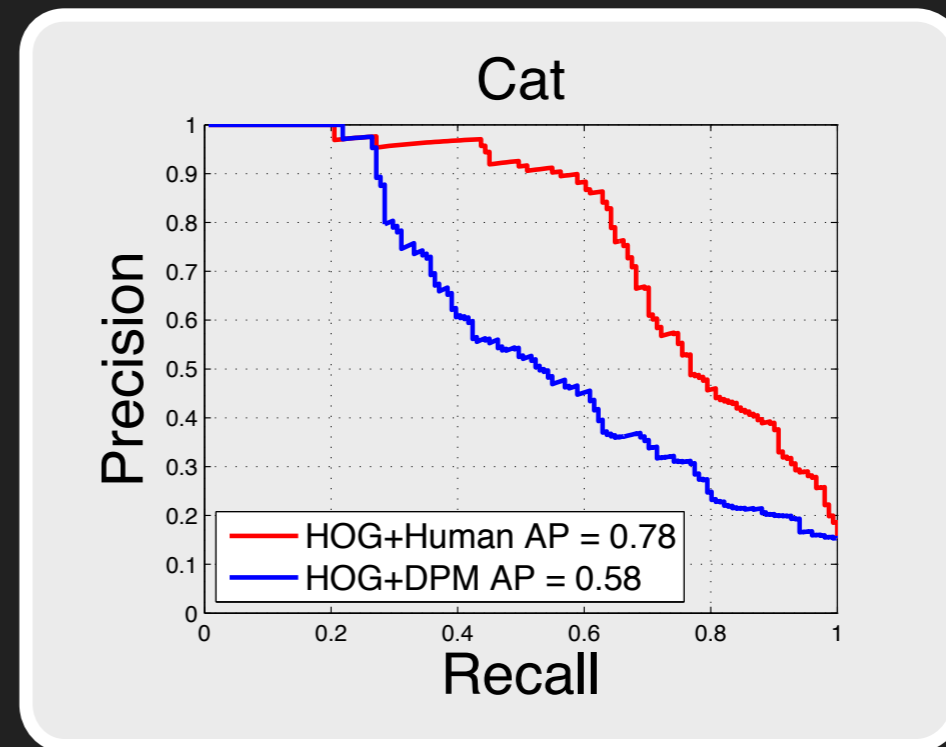
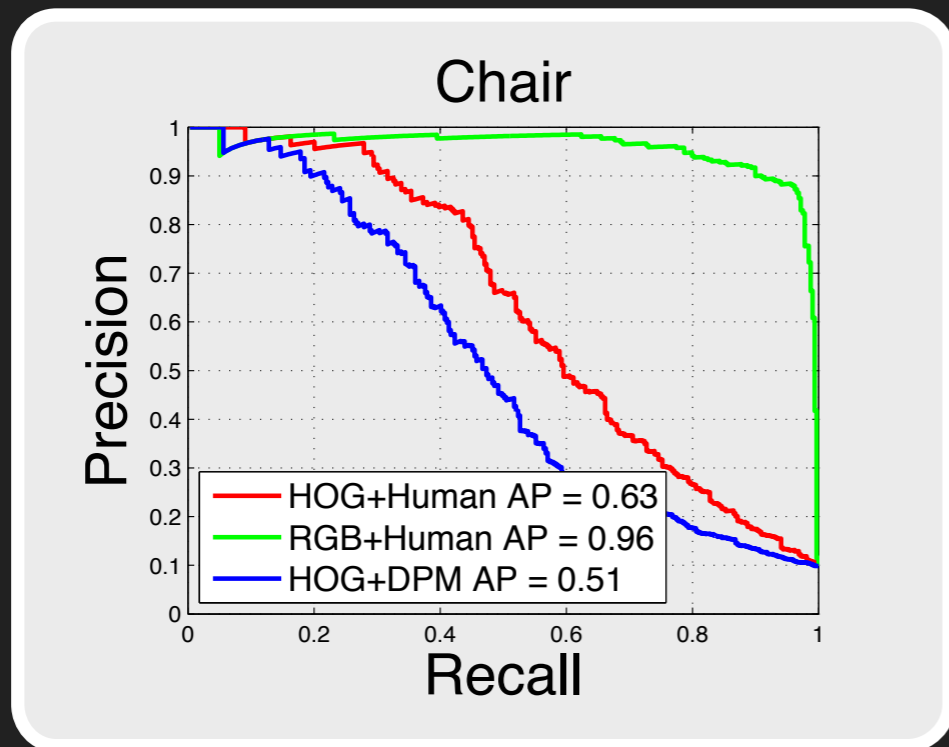


HOG+DPM

RGB+Human

HOG+Human

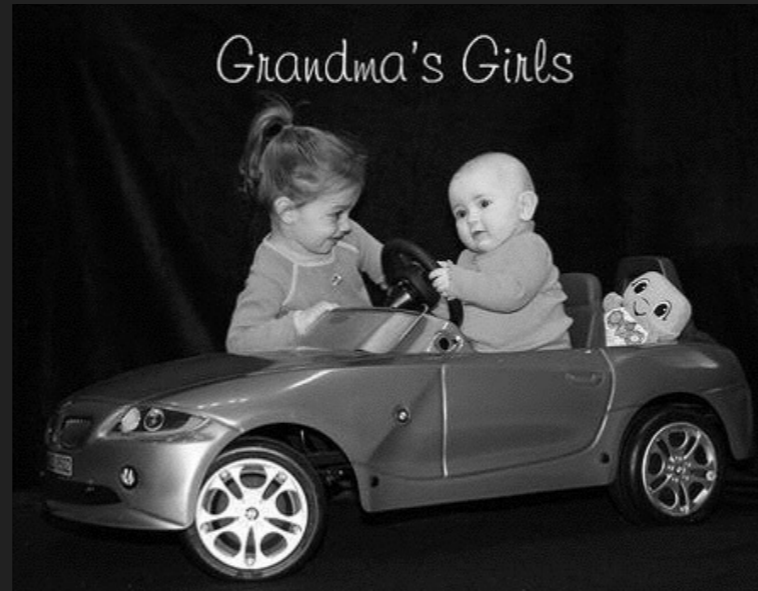
HOG+Human Detector



Comparing Features



Comparing Features



HOG



Comparing Features



HSC

HOG



Comparing Features



HSC

HOG



Comparing Features



HSC

HOG



What HOG sees,
but HSC does not

Inverting Deep Learning

Experimental

Inverting Deep Learning



Last convolutional layer of Krizhevsky et al.
Code from DeCAF by Donahue et al.

Experimental

Extracting Color from HOG



HOG



Image

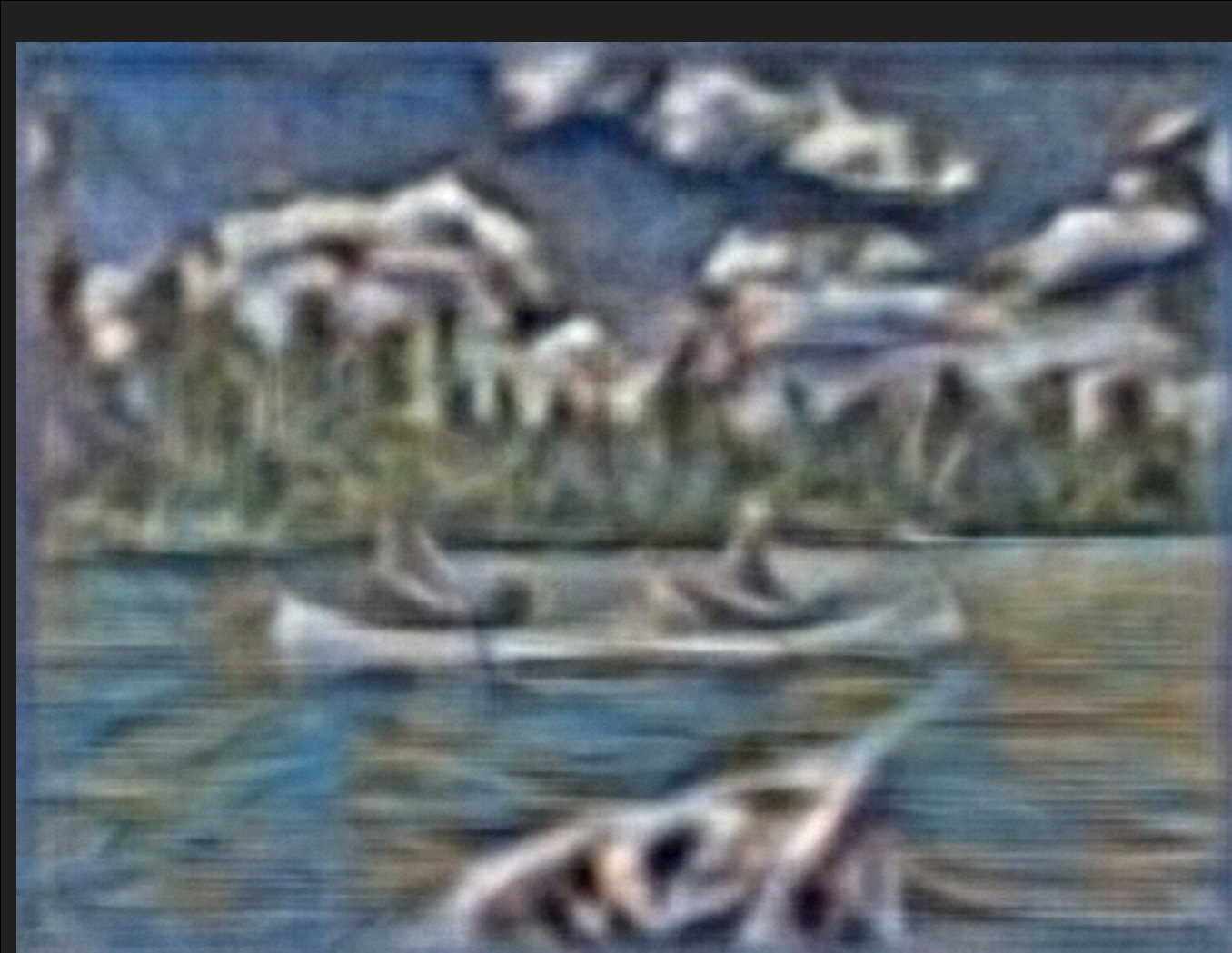
Extracting Color from HOG



HOG

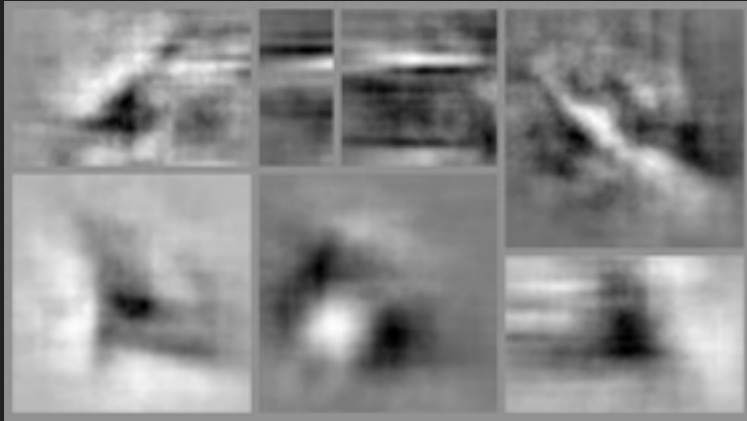


Image



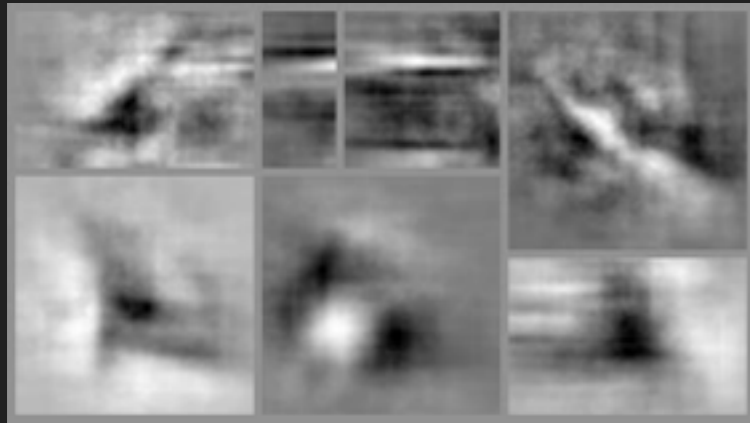
Visualizing Learned Models

Visualizing Learned Models

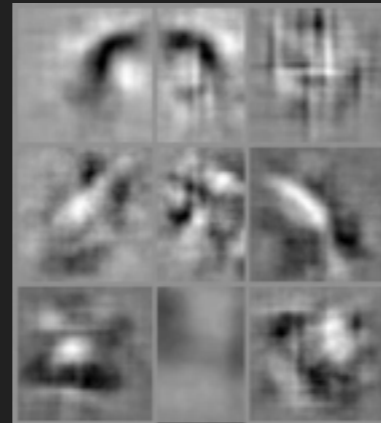


Car

Visualizing Learned Models

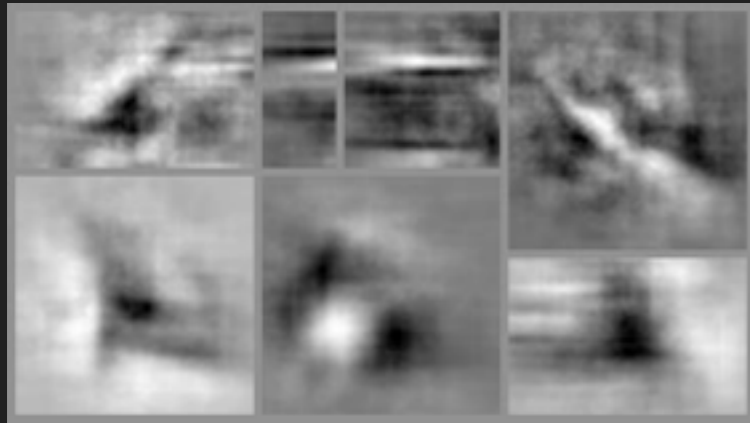


Car

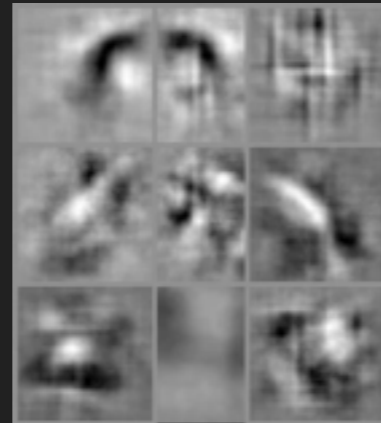


Person

Visualizing Learned Models



Car

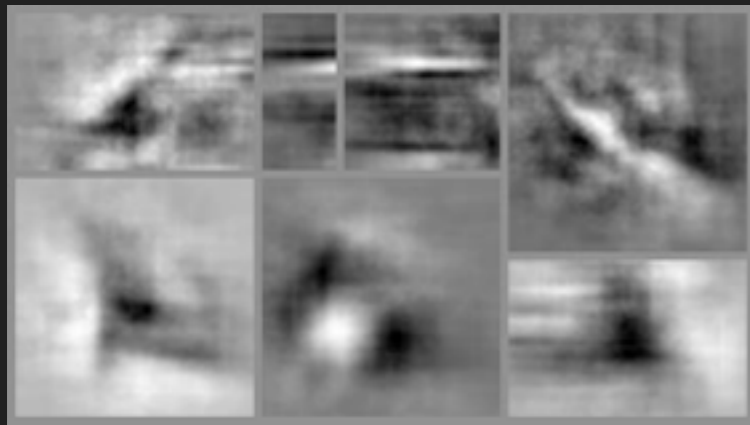


Person

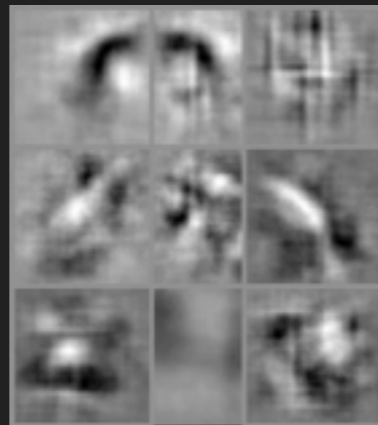


Bottle

Visualizing Learned Models



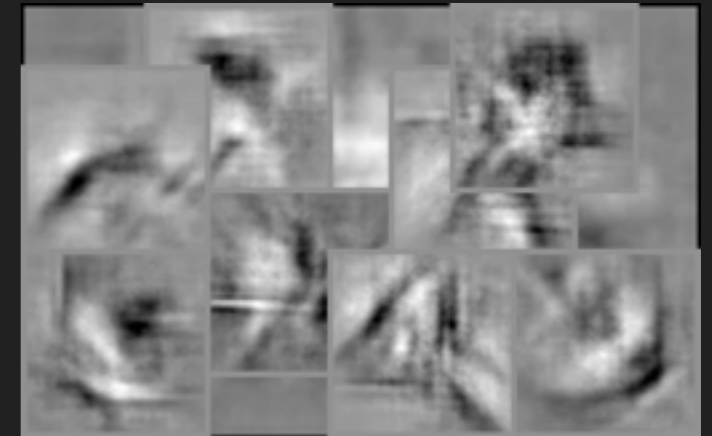
Car



Person

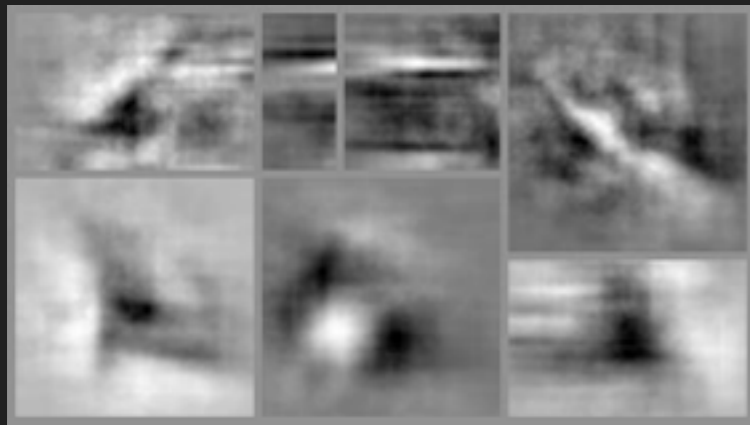


Bottle

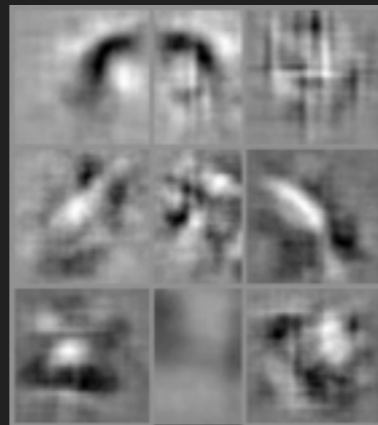


Bicycle

Visualizing Learned Models



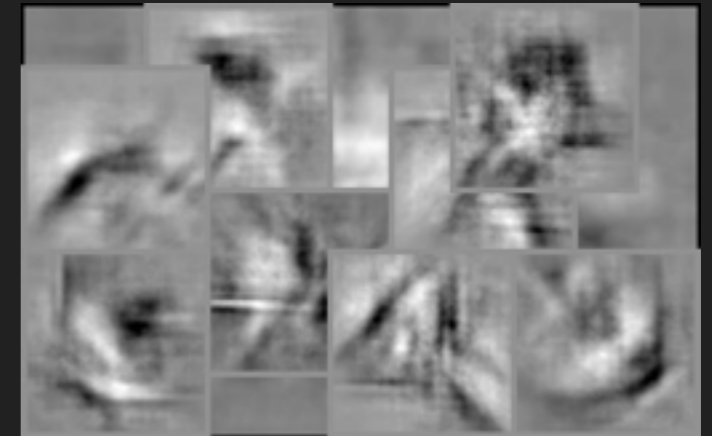
Car



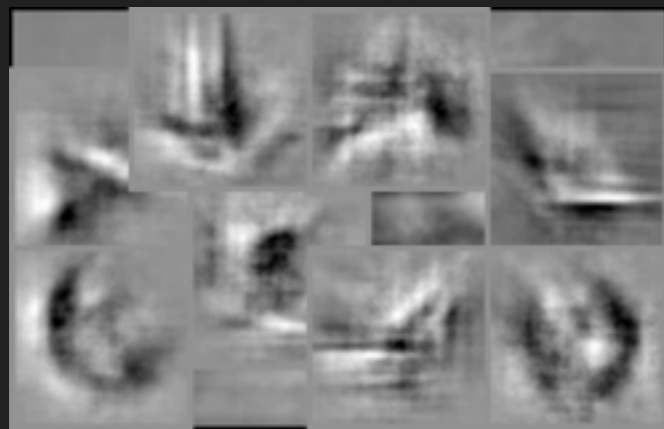
Person



Bottle



Bicycle



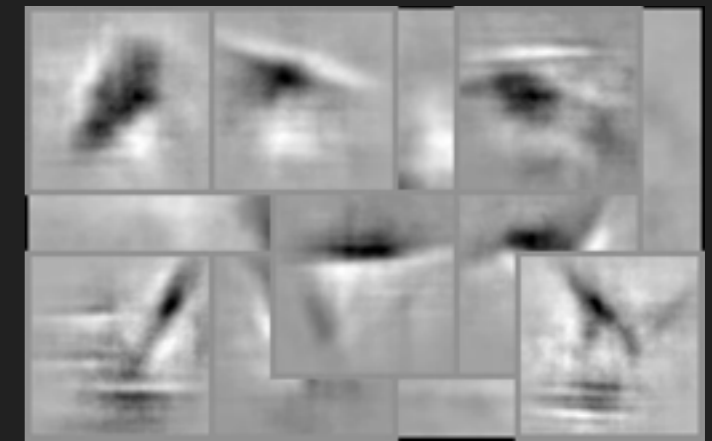
Motorbike



Chair

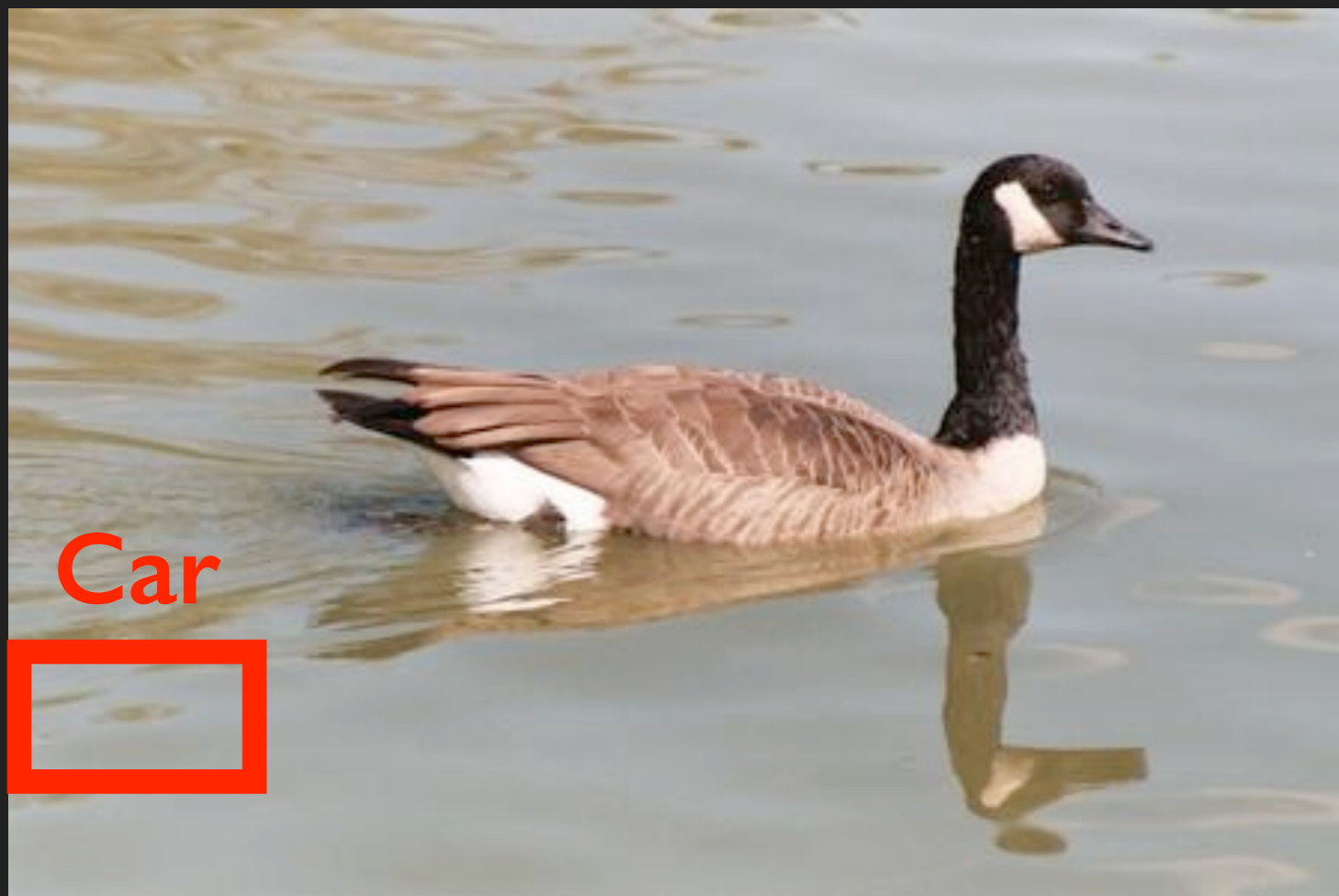


TV

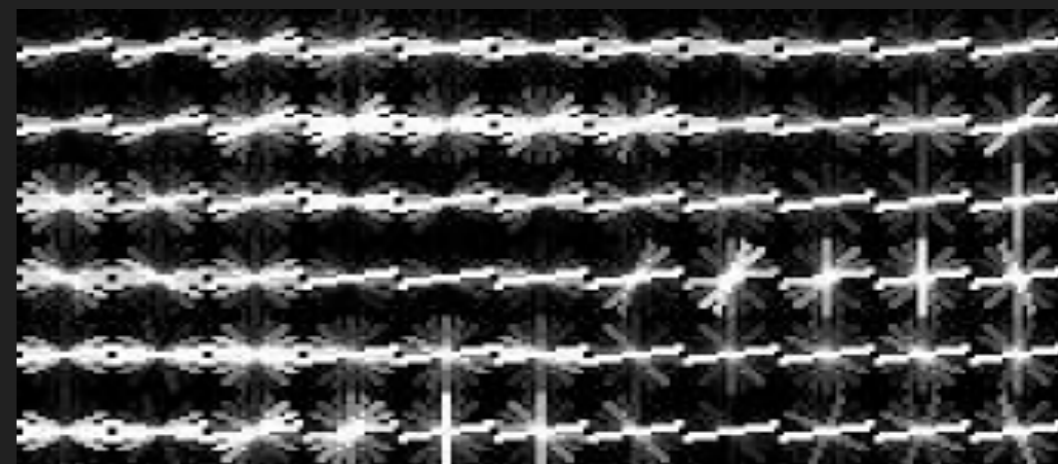
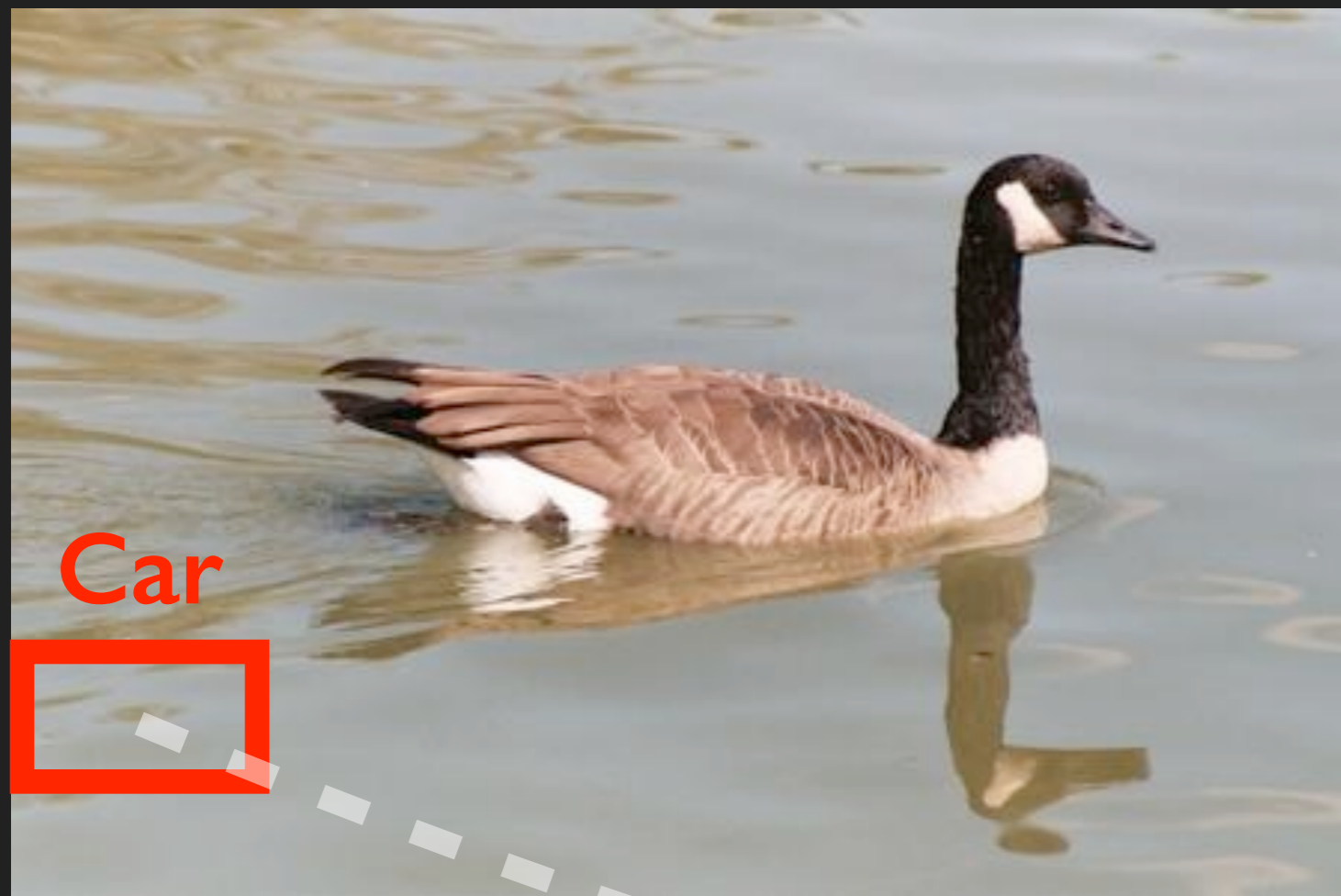


Horse

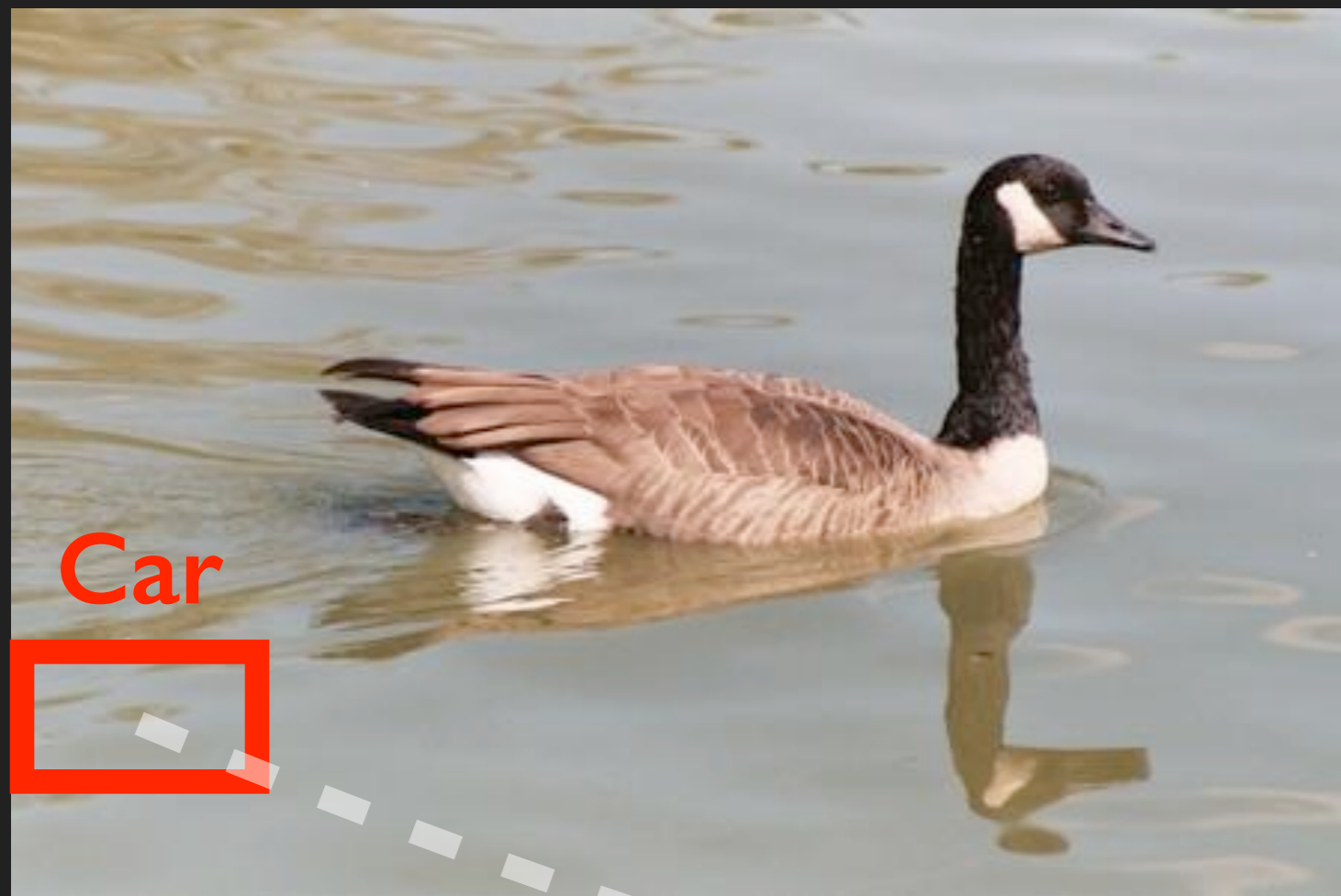
Why did the detector fail?



Why did the detector fail?



Why did the detector fail?



Code Available

```
ihog = invertHOG(feats);
```

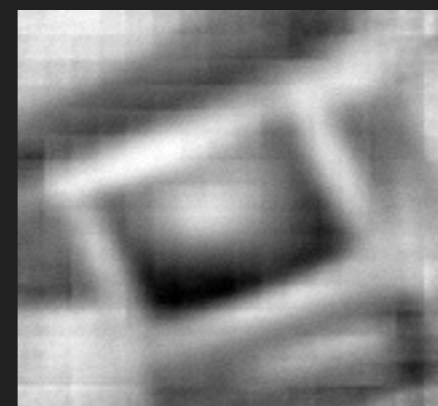
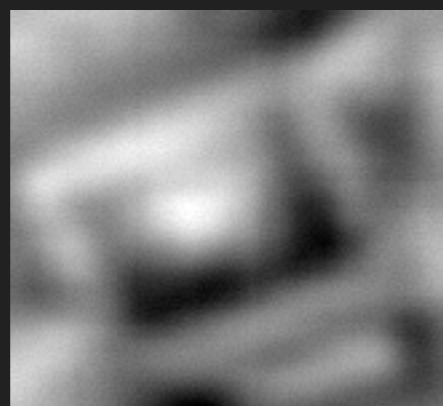
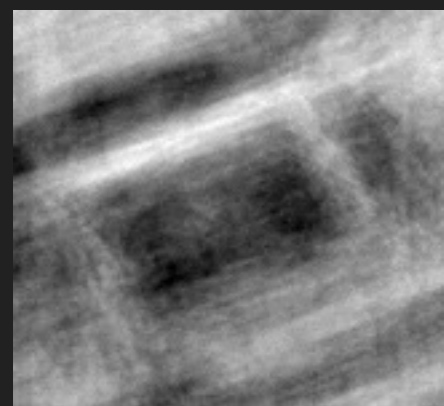
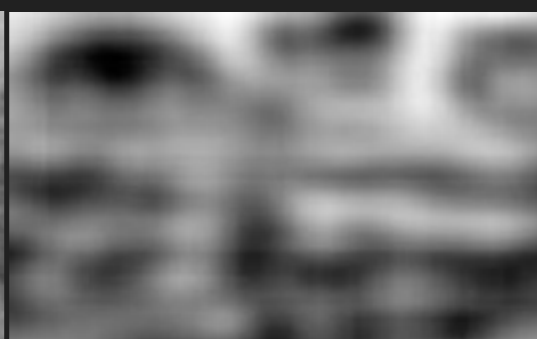
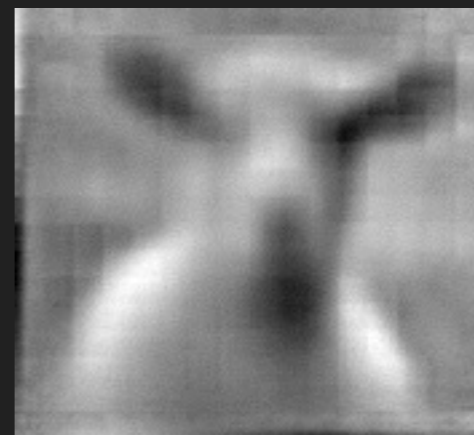
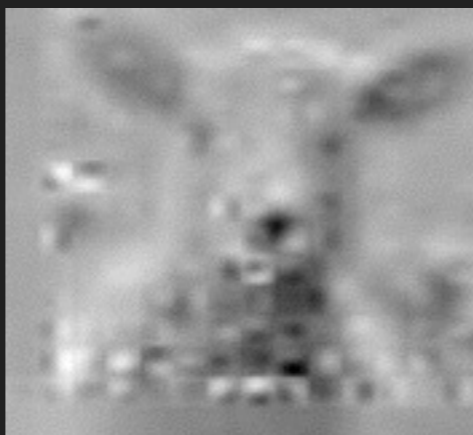
Download at

mit.edu/hoggles



Thanks!

Code + demos + more:
mit.edu/hoggles



ELDA

Ridge

Direct

PairDict

Recovering Pixels

Category	ELDA	Ridge	Direct	PairDict
bicycle	0.452	0.577	0.513	0.561
bottle	0.697	0.683	0.666	0.671
car	0.668	0.677	0.652	0.639
cat	0.749	0.712	0.687	0.705
chair	0.666	0.621	0.604	0.617
table	0.656	0.617	0.582	0.614
horse	0.686	0.633	0.586	0.635
motorbike	0.573	0.617	0.549	0.592
person	0.696	0.667	0.646	0.646
Mean	0.671	0.656	0.620	0.637

HOGgles on MTurk

Image Classification

In each image below, indicate whether you think it is a Chair or not. We know the answers to some of the easy images, and we will use this to verify your work. [Instructions](#)

Showing image 1 of 10



Is this image a Chair?

- Image is NOT a Chair (press n) Image is a Chair (press y)

[Previous Image](#)

[Next Image](#)

[Submit HIT](#)

Recovering Semantics

Category	ELDA	Ridge	Direct	PairDic	Glyph	Expert
bicycle	0.327	0.127	0.362	0.307	0.405	0.438
bottle	0.269	0.282	0.283	0.446	0.312	0.222
car	0.397	0.457	0.617	0.585	0.359	0.389
cat	0.219	0.178	0.381	0.199	0.139	0.286
chair	0.099	0.239	0.223	0.386	0.119	0.167
table	0.152	0.064	0.162	0.237	0.071	0.125
horse	0.260	0.290	0.354	0.446	0.144	0.15
motorbike	0.221	0.232	0.396	0.224	0.298	0.35
person	0.458	0.546	0.502	0.676	0.301	0.375
Mean	0.282	0.258	0.355	0.383	0.191	0.223