

Pervasive Detection of Process Races in Deployed Systems

Oren Laadan, Nicolas Viennot, Chia-Che Tsai,
Chris Blinn, Junfeng Yang, and Jason Nieh
orenl@cs.columbia.edu, nviennot@cs.columbia.edu, chiache.tsai@gmail.com,
cpb2114@columbia.edu, junfeng@cs.columbia.edu, nieh@cs.columbia.edu
Department of Computer Science
Columbia University

ABSTRACT

Process races occur when multiple processes access shared operating system resources, such as files, without proper synchronization. We present the first study of real process races and the first system designed to detect them. Our study of hundreds of applications shows that process races are numerous, difficult to debug, and a real threat to reliability. To address this problem, we created RACEPRO, a system for automatically detecting these races. RACEPRO checks deployed systems *in-vivo* by recording live executions then deterministically replaying and checking them later. This approach increases checking coverage beyond the configurations or executions covered by software vendors or beta testing sites. RACEPRO records multiple processes, detects races in the recording among system calls that may concurrently access shared kernel objects, then tries different execution orderings of such system calls to determine which races are harmful and result in failures. To simplify race detection, RACEPRO models under-specified system calls based on load and store micro-operations. To reduce false positives and negatives, RACEPRO uses a *replay and go-live* mechanism to distill harmful races from benign ones. We have implemented RACEPRO in Linux, shown that it imposes only modest recording overhead, and used it to detect a number of previously unknown bugs in real applications caused by process races.

Categories and Subject Descriptors:

D.2.4 [Software Engineering]: Software/Program Verification;
D.4.5 [Operating Systems]: Reliability

General Terms:

Design, Reliability, Verification

Keywords:

Record-replay, Debugging, Race Detection, Model Checking

1 Introduction

While thread races have drawn much attention from the research community [9, 11, 30, 36, 38], little has been done for *process races*, where multiple processes access an operating system (OS) resource such as a file or device without proper synchronization. Process races are much broader than time-of-check-to-time-of-use (TOCTOU) races or signal races [39]. A typical TOCTOU race is an atomicity violation where the permission check and the use of a resource are not atomic, so that a malicious process may slip in. A signal race is often triggered when an attacker delivers two signals consecutively to a process to interrupt and reenter a non-reentrant signal handler. In contrast, a process race may be any form of race. Some real examples include a shutdown script that unmounts a file system before another process writes its data, `ps | grep X` shows N or $N + 1$ lines depending on the timing of the two commands, and `make -j` failures.

To better understand process races, we present the first study of real process races. We study hundreds of real applications across six Linux distributions and show that process races are numerous and a real threat to reliability and security. For example, a simple search on Ubuntu's software management site [2] returns hundreds of process races. Compared to thread races that typically corrupt volatile application memory, process races are arguably more dangerous because they often corrupt persistent and system resources. Our study also reveals that some of their characteristics hint towards potential detection methods.

We then present RACEPRO, the first system for automatically detecting process races beyond TOCTOU and signal races. RACEPRO faces three key challenges. The first is scope: process races are extremely heterogeneous. They may involve many different programs. These programs may be written in different programming languages, run within different processes or threads, and access diverse resources. Existing detectors for thread or TOCTOU races are unlikely to work well with this heterogeneity.

The second challenge is coverage: although process races are numerous, each particular process race tends to be highly elusive. They are timing-dependent, and tend to surface only in rare executions. Arguably worse than thread races, they may occur only under specific software, hardware, and user configurations at specific sites. It is hopeless to rely on a few software vendors and beta testing sites to create all possible configurations and executions for checking.

The third challenge is algorithmic: what race detection algorithm can be used for detecting process races? Existing algorithms assume well-defined load and store instructions and thread synchronization primitives. However, the effects of system calls are often under-specified and process synchronization primitives are very

Permission to make digital or hard copies of all or part of this work for personal or classroom use is granted without fee provided that copies are not made or distributed for profit or commercial advantage and that copies bear this notice and the full citation on the first page. To copy otherwise, to republish, to post on servers or to redistribute to lists, requires prior specific permission and/or a fee.

SOSP'11, October 23-26, 2011, Cascais, Portugal.

Copyright 2011 ACM X-XXXXX-XX-X/XX/XX ...\$5.00.

different from those used in shared memory. For instance, what shared objects does `execve` access? In addition to reading the inode of the executed binary, an obvious yet incomplete answer, `execve` also conceptually writes to `/proc`, which is the root cause of the `ps | grep X race` (§5). Similarly, a thread-join returns only when the thread being waited for exits, but `wait` may return when any child process exits or any signal arrives. Besides fork-wait, processes can also synchronize using pipes, signals, `ptrace`, etc. Missing the (nuanced) semantics of these system calls can lead to false positives where races that do not exist are mistakenly identified and, even worse, false negatives where harmful races are not detected.

RACEPRO addresses these challenges with four ideas. First, it checks deployed systems *in-vivo*. While a deployed system is running, RACEPRO records the execution without doing any checking. RACEPRO then systematically checks this recorded execution for races *offline*, when the deployed system is idle or by replicating the execution to a dedicated checking machine. By checking deployed systems, RACEPRO mitigates the coverage challenge because all user machines together can create a much larger and more diverse set of configurations and executions for checking. Alternatively, if a configuration or execution never occurs, it is probably not worth checking. By decoupling recording and checking [7], RACEPRO reduces its performance overhead on the deployed systems.

Second, RACEPRO records a deployed system as a system-wide, deterministic execution of multiple processes and threads. RACEPRO uses lightweight OS mechanisms developed in our previous work [17] to transparently and efficiently record nondeterministic interactions such as related system calls, signals, and shared memory accesses. No source code or modifications of the checked applications are required, mitigating the scope challenge. Moreover, since processes access shared OS resources through system calls, this information is recorded at the OS level so that RACEPRO can use it to detect races regardless of higher level program semantics.

Third, to detect process races in a recorded execution, RACEPRO models each system call by what we call *load and store micro-operations* to shared kernel objects. Because these two operations are well-understood by existing race detection algorithms, RACEPRO can leverage these algorithms, mitigating the algorithmic challenge. To reduce manual annotation overhead, RACEPRO automatically infers the micro-operations a system call does by tracking how it accesses shared kernel objects, such as inodes. Given these micro-operations, RACEPRO detects *load-store races* when two concurrent system calls access a common kernel object and at least one system call stores to the object. In addition, it detects *wait-wakeup races* such as when two child processes terminate simultaneously so that either may wake up a waiting parent. To our knowledge, no previous algorithm directly handles wait-wakeup races.

Fourth, to reduce false positives and negatives, RACEPRO uses *replay and go-live* to validate detected races. A race detected based on the micro-operations may be either *benign* or *harmful*, depending on whether it leads to a *failure*, such as a segmentation fault or a program abort. RACEPRO considers a change in the order of the system calls involved in a race to be an *execution branch*. To check whether this branch leads to a failure, RACEPRO replays the recorded execution until the *reordered* system calls then resumes live execution. It then runs a set of built-in or user-provided checkers on the live execution to detect failures, and emits a bug report only when a real failure is detected. By checking many execution branches, RACEPRO reduces false negatives. By reporting only harmful races, it reduces false positives.

We have implemented RACEPRO in Linux as a set of kernel components for record, replay, and go-live, and a user-space explo-

ration engine for systematically checking execution branches. Our experimental results show that RACEPRO can be used in production environments with only modest recording overhead, less than 2.5% for server and 15% for desktop applications. Furthermore, we show that RACEPRO can detect 10 real bugs due to process races in widespread Linux distributions.

This paper is organized as follows. §2 presents a study of process races and several process race examples. §3 presents an overview of the RACEPRO architecture. §4 describes the execution recording mechanism. §5 describes the system call modeling using micro-operations and the race detection algorithm. §6 describes how replay and go-live are used to determine harmful races. §7 presents experimental results. §8 discusses related work. Finally, §9 presents some concluding remarks and directions for future work.

2 Process Race Study

We conducted a study of real process races with two key questions in mind. First, are process races a real problem? Second, what are their characteristics that may hint towards how to detect them? We collected bugs from six widespread Linux distributions, namely Ubuntu, RedHat, Fedora, Gentoo, Debian, and CentOS. For each distribution, we launched a search query of “race” on the distribution’s software management website. We manually examined a random sample of the returned pages, identified all unique bugs in the sampled pages, and classified these bugs based on whether they resulted in process or thread races. Raw data of the studied bugs is available [1]. §2.1 presents our findings. §2.2 describes four process race examples from the most serious to the least.

2.1 Findings

Table 1 summarizes the collected pages and bugs; Fedora and Redhat results are combined as they share the same management website. For each distribution, we show the number of pages returned for our query (Returned), the number of pages sampled and manually examined (Sampled), the number of process races (Process) and the subset of which were TOCTOU races, the number of thread races (Thread), and the total number of bugs in the sampled pages (Total).

Process races are numerous. Of the 150 sampled bugs, 109 resulted in process races, a dominating majority; the other 41 bugs resulted in thread races. However, thread races are likely under-represented because the websites we searched are heavily used by Linux distribution maintainers, not developers of individual applications. Of the 109 process races, 84 are not TOCTOU races and therefore cannot be detected by existing TOCTOU detectors. Based on this sample, the 7,498 pages that our simple search returned may extrapolate to over 1,500 process races. Note that our counting is very conservative: the sampled pages contain an additional 58 likely process races, but the pages did not contain enough information for us to understand the cause, so we did not include them in Table 1.

Distribution	Pages		Total	Bugs	
	Returned	Sampled		Process	Thread
Ubuntu	3330	300	45	42 (1)	3
Fedora/RedHat	1070	100	52	30 (10)	22
Gentoo	2360	60	31	23 (10)	8
Debian	768	40	17	12 (4)	5
CentOS	1500	40	5	2 (0)	3
Total	9028	540	150	109 (25)	41

Table 1: Summary of collected pages and bugs.

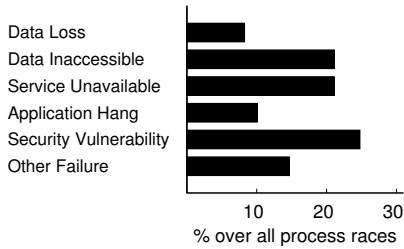


Figure 1: *Process races breakdown by effects.*

Process races are dangerous. Compared to thread races that typically corrupt volatile application memory, process races are arguably more dangerous because they often corrupt persistent and system resources. Indeed, the sampled process races caused security breaches, files and databases to become corrupted, programs to read garbage, and processes to get stuck in infinite loops. Figure 1 summarizes the effects of all process races from Table 1.

Process races are heterogeneous. The sampled process races spread across over 200 programs, ranging from server applications such as MySQL, to desktop applications such as OpenOffice, to shell scripts in Upstart [4], an event-driven replacement of System V `init` scripts. Figure 2 breaks down the process races by packages, processes, and programming languages involved. Over half of the 109 process races, including all examples described in §2.2, require interactions of at least two programs. These programs are written in different programming languages such as C, Java, PHP, and shell scripts, run in multiple processes, synchronize via `fork` and `wait`, pipes, sockets, and signals, and access resources such as files, devices, process status, and mount points.

This heterogeneity makes it difficult to apply existing detection methods for thread races or TOCTOU races to process races. For instance, static thread race detectors [11] work only with one program written in one language, and dynamic thread race detectors [38] work only with one process. To handle this heterogeneity, RACE-PRO’s race detection should be system-wide.

Process races are highly elusive. Many of the process races, including Bug 1 and 3 described in §2.2, occur only due to site-specific software, hardware, and user configurations. Moreover, many of the sampled process races, including all of those described in §2.2, occur only due to rare runtime factors. For example, Bug 1 only occurs when a database shutdown takes longer than usual, and Bug 2 only occurs when a signal is delivered right after a child process exited. These bugs illustrate the advantage of checking deployed systems, so that we can rely on real users to create the diverse configurations and executions to check.

Process race patterns. Classified by the causes, the 109 process races fall into two categories. Over two thirds (79) are execution

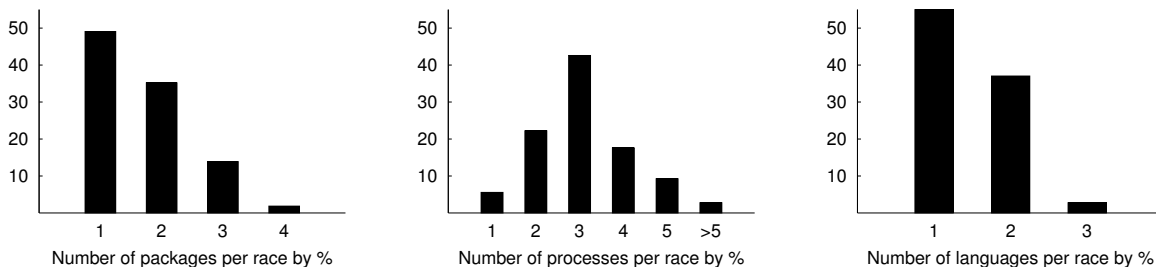


Figure 2: *Process races breakdown.* X axis shows the number of software packages, processes, or programming languages involved. Y axis shows the percentage of process races that involve the specific number of packages, processes, or languages. To avoid inflating the number of processes, we count a run of a shell script as one process. (Each external command in a script causes a `fork`.)

order violations [20], such as Bug 1, 3, and 4 in §2.2, where a set of events are supposed to occur in a fixed order, but no synchronization operations enforce the order. Less than one third (30) are atomicity violations, including all TOCTOU bugs; most of them are the simplest load-store races, such as Bug 2 in §2.2. Few programs we studied use standard locks (*e.g.*, `flock`) to synchronize file system accesses among processes. These patterns suggest that a lockset-based race detection algorithm is unlikely to work well for detecting process races. Moreover, it is crucial to use an algorithm that can detect order violations.

2.2 Process Race Examples

Bug 1: Upstart-MySQL. `mysqld` does not cleanly terminate during system shutdown, and the file system becomes corrupted. This failure is due to an execution order violation where `S20sendmails`, the shutdown script that terminates processes, does not wait long enough for MySQL to cleanly shutdown. The script then fails to unmount the file system which is still in use, so it proceeds to reboot the system without cleanly unmounting the file system. Its occurrence requires a combination of many factors, including the mixed use of Systems V initialization scripts and Upstart, a misconfiguration so that `S20sendmails` does not wait for daemons started by Upstart, insufficient dependencies specified in MySQL’s Upstart configuration file, and a large MySQL database that takes a long time to shut down.

Bug 2: dash-MySQL. The shell wrapper `mysql_safe` of the MySQL server daemon `mysqld` goes into an infinite loop with 100% CPU usage after a MySQL update. This failure is due to an atomicity violation in `dash`, a small shell Debian uses to run daemons [3]. It occurs when `dash` is interrupted by a signal unexpectedly. Figure 3 shows the event sequence causing this race. To run a new background job, `dash` forks a child process and adds it to the job list of `dash`. It then calls `setjmp` to save an execution context and waits for the child to exit. After the child exits, `wait` returns, and `dash` is supposed to remove the child from the job list. However, if a signal is delivered at this time, `dash`’s signal handler will call `longjmp` to go back to the saved context, and the subsequent `wait` call will fail because the child’s exit status has been collected by the previous `wait` call. The job list is still not empty, so `dash` gets stuck waiting for the nonexistent child to exit. Although this bug is in `dash`, it is triggered in practice by a combination of `dash`, the `mysql_safe` wrapper, and `mysqld`.

Bug 3: Mutt-OpenOffice. OpenOffice displays garbage when a user tries to open a Microsoft (MS) Word attachment in the Mutt mail client. This failure is due to an execution order violation when `mutt` prematurely overwrites the contents of a file before OpenOffice uses this file. It involves a combination of Mutt, OpenOffice, a user configuration entry in Mutt, and the `openoffice` shell script wrapper. The user first configures Mutt to use the `openoffice`

```

child = fork()
setjmp(loc)
p = wait(...) [blocks...]
...           // ← child exits
p = wait(...) [...returns]
...           // ← signaled
longjmp(loc)
p = wait(...) // error (no child)

```

Figure 3: *dash-MySQL* race.

wrapper to open MS Word attachments. To show an attachment, `mutt` saves the attachment to a temporary file, spawns the configured viewer in a new process, and waits for the viewer process to exit. The `openoffice` wrapper spawns the actual OpenOffice binary and exits at once. `mutt` mistakes this exit as the termination of the actual viewer, and overwrites the temporary file holding the attachment with all zeros, presumably for privacy reasons.

Bug 4: bash. The `bash` shell history is corrupted. This failure is due to an atomicity violation when multiple `bash` shells write concurrently to `.bash_history` without synchronization. When `bash` appends to the history file, it correctly uses `O_APPEND`. However, it also occasionally reads back the history file and overwrites it, presumably to keep the history file under a user-specified size. Figure 4 shows this problematic sequence of system calls. `bash` also runs this sequence when it exits. When multiple `bash` processes exit at the same time, the history file may be corrupted.

3 Architecture Overview

RACEPRO is designed to automatically detect process races using the workflow shown in Figure 5. It consists of three steps, the first of which runs on the deployed system, while the latter two can run elsewhere on a separate replay system to avoid any performance impact on the deployed system. First, a *recorder* records the execution of a deployed system while the system is running and stores the recording in a log file. Second, an *explorer* reads the log and detects load-store and wait-wakeup races in the recorded execution. Third, each race is validated to determine if it is harmful. An execution branch of the recorded execution corresponding to each race is computed by systematically changing the order of system calls involved in the race. For each execution branch, a modified log is constructed that is used to replay execution with the changed order of system calls. A *replayer* replays the respective modified log up to the occurrence of the race, then causes it to resume live execution from that point onward. A set of built-in and user-provided *checkers* then check whether the execution results in misbehavior or a failure such as a segmentation fault. By examining the effects of a live execution, we distinguish harmful races from false or be-

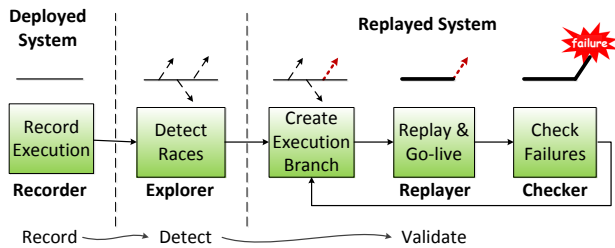


Figure 5: RACEPRO *Workflow*. Thin solid lines represent recorded executions; thick solid lines represent replayed executions. Dashed arrows represent potentially buggy execution branches. The dotted thick arrow represents the branch RACEPRO selects to explore.

```

fd = open(H,RDONLY);
read(fd, buf, ...);
close(fd);
... // update buf
... // do work
fd = open(H,WONLY|TRUNC);
write(fd, buf, ...);
close(fd);

```

Figure 4: *bash* race.

nign ones, thus reducing false positives [25, 30]. The live part of the re-execution is also recorded, so that users can deterministically replay detected bugs for debugging.

Figure 6 shows the RACEPRO architecture used to support its workflow. Of the four main architectural components, the recorder and the replayer run in kernel-space, and the explorer and checkers run in user-space. We will describe how RACEPRO records executions (§4) and detects (§5) and validates (§6) races using these components.

4 Recording Executions

RACEPRO’s record-replay functionality builds on our previous work on lightweight OS-level deterministic replay on multiprocessors [17]. This approach provides four key benefits for detecting process races. First, RACEPRO’s recorder can record the execution of multiple processes and threads with low overhead on a deployed system so that the replayer can later deterministically replay that execution. This makes RACEPRO’s *in-vivo* checking approach possible by minimizing the performance impact of recording deployed systems. Second, RACEPRO’s record-replay is application-transparent; it does not require changing, relinking, or recompiling applications or libraries. This enables RACEPRO to detect process races that are extremely heterogeneous involving many different programs written in different program languages. Third, RACEPRO’s recorder operates at the OS level to log sufficiently fine-grained accesses to shared kernel objects so that RACEPRO’s explorer can detect races regardless of high-level program semantics (§5). Finally, RACEPRO’s record-replay records executions such that it can later transition from controlled replay of the recording to live execution at any point. This enables RACEPRO to distinguish harmful races from benign ones by allowing checkers to monitor an application for failures (§6.2).

To record the execution of multiprocess and multithreaded applications, RACEPRO records all nondeterministic interactions between applications and the OS and saves the recording as a log file. We highlight how key interactions involving system calls, signals, and shared memory are handled.

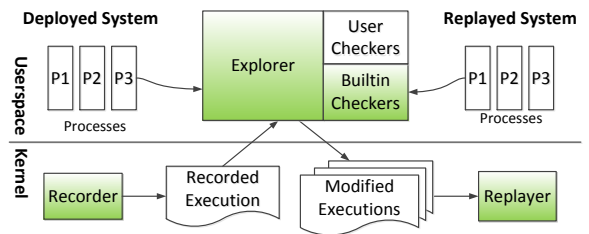


Figure 6: RACEPRO *Architecture*. Components are shaded. The recorder and the replayer run in kernel-space, and the explorer and the checkers run in user-space. Recorded executions and modified executions are stored in files.

Object	Description
inode	file, directory, socket, pipe, tty, pty, device
file	file handle of an open file
file-table	process file table
mmap	process memory map
cred	process credentials and capabilities, <i>e.g.</i> , user ID
global	system-wide properties (<i>e.g.</i> , hostname, mounts)
pid	process ID (access to process and <code>/proc</code>)
ppid	parent process ID (synchronize <code>exit/getppid</code>)

Table 2: Shared kernel objects tracked.

System calls. Unlike previous work [15, 31] that records and replays a total order of system calls, RACEPRO records and replays a partial order of system calls for speed. RACEPRO enforces no ordering constraints among system calls during record-replay unless they access the same kernel object and at least one of them modifies it, such as a `write` and a `read` on the same file. In that case, RACEPRO records the order in the kernel in which the object is accessed by the system calls and later replays the exact same order of accesses. This is done by piggybacking on the synchronization code that the kernel already has for serializing accesses to shared objects. These tracked accesses also help detect process races in a recorded execution (§5).

Table 2 lists the kernel objects tracked by RACEPRO. Most of the entries correspond one-to-one to specific low-level kernel resources, including inodes, files, file-tables, memory maps, and process credentials. The global entry corresponds to system-wide kernel objects, such as the hostname, file system mounts, system time, and network interfaces. For each such system-wide resource there is a unique global kernel object used to track accesses to that resource. The last two entries in the table, `pid` and `ppid`, provide a synchronization point to track dependencies on process states. For example, the `pid` entry of a process is used to track instances where the process is referenced by another process, *e.g.*, through a system call that references the process ID or through the `/proc` file system. The `ppid` entry is used to track when an orphan process is re-parented, which is visible through the `getppid` system call. Both `pid` and `ppid` correspond to identifiers that are visible to processes but cannot be modified explicitly by processes.

The recorder only tracks kernel objects whose state is visible to user-space processes, either directly or indirectly. For example, inode state is accessible via the system call `lstat`, and file-table state is visible through resolving of file descriptor in many system calls. RACEPRO does not track accesses to kernel objects which are entirely invisible to user-space. This avoids tracking superfluous accesses that may pollute the race detection results with unnecessary dependencies. For example, both the `fork` and `exit` system calls access the kernel process table, but the order is unimportant to user-space. It only matters that the lifespan of processes is observed correctly, which is already tracked and enforced via the `pid` resource. If RACEPRO tracked accesses to the kernel process table, it would mistakenly conclude that every two `fork` system calls are “racy” because they all modify a common resource (§5). One complication with this approach is that if the kernel object in question controls assignment of identifiers (*e.g.*, process ID in the `fork` example), it may assign different identifiers during replay because the original order of accesses is not enforced. To address this problem, RACEPRO virtualizes identifiers such as process IDs to ensure the same values are allocated during replay as in the recording.

Signals. Deterministically replaying signals is hard since they must be delivered at the exact same instruction in the target execution flow as during recording. To address this problem, RACE-

PRO uses *sync points* that correspond to synchronous kernel entries such as system calls. Sending a signal to a target process may occur at any time during the target process’s execution. However, RACEPRO defers signal delivery until sync points occur to make their timing deterministic so they are easier to record and replay efficiently. Unlike previous approaches, sync points do not require hardware counters or application modifications, and do not adversely impact application performance because they occur frequently enough in real server and desktop applications due to OS activities.

Shared memory. RACEPRO combines page ownership with sync points to deterministically record and replay the order of shared memory accesses among processes and threads. Each shared memory page is assigned an owner process or thread for some time interval. The owner can exclusively modify that page during the interval and treat it like private memory, avoiding the need to track all memory accesses during such ownership periods. Transitioning page ownership from one process or thread to another is done using a concurrent read, exclusive write (CREW) protocol [10, 19]. To ensure that ownership transitions occur at precisely the same location in the execution during both record and replay, RACEPRO defers such transitions until the owner reaches a sync point. When a process tries to access an owned page, it triggers a page fault, notifies the owner, and blocks until access is granted. Conversely, each owner checks for pending requests at every sync point and, if necessary, gives up ownership. Page faults due to the memory interleaving under the CREW protocol are synchronous kernel entries that deterministically occur on replay and hence are also used as sync points.

5 Detecting Process Races

RACEPRO flags a set of system calls as a race if (1) they are *concurrent* and therefore could have executed in a different order than the order recorded, (2) they access a common resource such that re-ordering the accesses may change the outcome of the execution. To determine whether a set of system calls are concurrent, RACEPRO constructs a happens-before [18] graph for the recorded execution (§5.1). To determine whether a set of system calls access common resources, RACEPRO obtains the shared kernel resources accessed by system calls from the log file and models the system calls as *load* and *store* micro-operations (§5.2) on those resources. RACEPRO then runs a set of happens-before based race detection algorithms to detect load-store and wait-wakeup races (§5.3).

5.1 The Happens-Before Graph

We define a partial ordering on the execution of system calls called *inherent* happens-before relations. We say that system call S_1 *inherently* happens-before system call S_2 if (1) S_1 accesses some resource before S_2 accesses that resource, (2) there is a dependency such that S_2 would not occur or complete unless S_1 completes, and (3) the dependency must be inferable from the system call semantics. For example, a `fork` that creates a child process inherently happens-before any system call in the child process, and a `write` to a pipe inherently happens-before a blocking `read` from the pipe. On the other hand, there is no inherent happens-before relation between a `read` and subsequent `write` to the same file.

RACEPRO constructs the happens-before graph using only inherent happens-before relations, as they represent the basic constraints on the ordering of system calls. Given a recorded execution, RACEPRO constructs a happens-before graph for all recorded system call events by considering pairs of such events. If two events S_1 and S_2 occur in the same process and S_2 is the next system call event that occurs after S_1 , RACEPRO adds a directed edge $S_1 \rightarrow S_2$ in the happens-before graph. If two events S_1 and S_2 occur in two

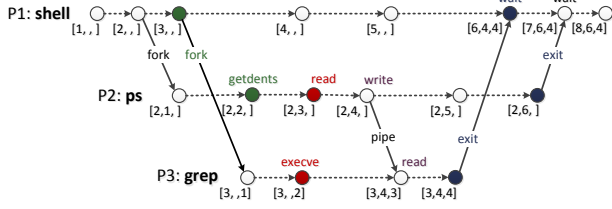


Figure 7: *The Happens-before graph and respective vector-clocks (in brackets) for `ps | grep X`. $P_{i=1,2,3}$ represent the processes involved. The `read` of process P_2 and the `execve` of P_3 form a load-store race (§5.3.1), and so do the second `fork` of P_1 and the `getdents` (read directory entries) of P_2 . The first `wait` of P_1 and the `exits` of P_2 and P_3 form a wait-wakeups race (§5.3.2). For clarity, not all system calls are shown.*

different processes, RACEPRO adds a directed edge $S_1 \rightarrow S_2$ in four cases:

1. S_1 is a `fork` call, and S_2 is the corresponding `fork` return in the child process;
2. S_1 is the `exit` of a child process, and S_2 is the corresponding `wait` in the parent;
3. S_1 is a `kill` call, and S_2 is the corresponding signal delivery in the target process; or
4. S_1 is a stream (e.g., pipe or socket) write, and S_2 is a read from the same stream and the data written and the data read overlap.

We say that event S_1 *happens-before* S_2 with respect to a happens-before graph iff there is a directed path from S_1 to S_2 in the happens-before graph. Two events are *concurrent* with respect to a happens-before graph iff neither happens before the other.

RACEPRO also computes the vector-clocks [22] for all the system calls in the happens-before graph. By definition, the vector-clock of S_1 is earlier than the vector-clock of S_2 iff S_1 *happens-before* S_2 with respect to the graph, so comparing the vector-clocks of system calls is a fast and efficient way to test whether they are concurrent.

Our definition of inherent happens-before does not capture all dependencies that may constrain execution ordering. It may be missing happens-before edges that depend on the behavior of the application but cannot be directly inferred from the semantics of the system calls involved. For example, the graph does not capture dependencies between processes via shared memory. It also does not capture dependencies caused by contents written to and read from files. For example, one can implement a fork-join primitive using read and write operations on a file. In some cases, such inaccuracies may make RACEPRO more conservative in flagging racy system calls and thereby identify impossible races. However, such cases will be filtered later by RACEPRO’s validation step (§6) and will not be reported.

Figure 7 shows the happens-before graph for the example command `ps | grep X`. This command creates two child processes that access `grep`’s entry in the `/proc` directory: the process that runs `grep` modifies its command-line data when executed, and the process that runs `ps` reads that data. A race exists because both processes access the common resource in an arbitrary order, and the end result can be either N or $N + 1$ lines depending on that order.

Consider the `execve` system call in process P_3 and the `read` system call in process P_2 . These two system calls are concurrent because there is no directed path between them in the graph. They both access a shared resource, namely, the inode of the file `cmd_line` in the directory corresponding to P_3 in `/proc`. Therefore, these system calls are racy: depending on the precise execu-

tion order, `read` may or may not observe the new command line with the string “X”. Similarly, the second `fork` in process P_1 and the `getdents` in process P_3 are also racy: `getdents` may or may not observe the newly created entry for process P_3 in the `/proc` directory.

In contrast, consider the pipe between P_2 and P_3 . This pipe is a shared resource accessed by their `write` and `read` system calls, respectively. However, these two system calls are not racy because they are not concurrent. There exists a happens-before edge in the graph because a read from the pipe will block until data is available after a write to it.

5.2 Modeling Effects of System Calls

Existing algorithms for detecting memory races among threads rely on identifying concurrent load and store instructions to shared memory. To leverage such race detection algorithms, RACEPRO models the effects of a system call on the kernel objects that it may access using two micro-operations: *load* and *store*. These micro-operations are analogous to the traditional load and store instructions that are well-understood by the existing algorithms, except our micro-operations refer to shared kernel objects, such as inodes and memory maps, instead of an application’s real shared memory.

More formally, we associate an abstract memory range with each kernel object. The effect of a system call on a kernel object depends on its semantics. If the system call only observes the object’s state, we use a *load(obj,range)* operation. If it may also modify the object’s state, we use a *store(obj,range)* operation. The argument *obj* indicates the affected kernel object, and the argument *range* indicates the ranges being accessed within that object’s abstract memory. A single system call may access multiple kernel objects or even the same kernel object multiple times within the course of its execution.

We use a memory range for a shared kernel object instead of a single memory location because system calls often access different properties of an object or ranges of the object data. For instance, `lstat` reads the meta-data of files, while `write` writes the contents of files. They access a common object, but because they access distinct properties of that object, we do not consider them to race. Likewise, `read` and `write` system calls to non-overlapping regions in the same file do not race.

Memory ranges are particularly useful to model pathnames. Pathname creation and deletion change the parent directory structure and may race with reading its contents, but pathname creation, deletion, and lookup may only race with each other if given the same pathname. For example, both `creat(/tmp/a)` and `unlink(/tmp/b)` may race with a `getdents` on `/tmp`, but are unrelated to each other or to an `lstat(/tmp/c)`. Modeling all pathname accesses using a single location on the parent directory’s inode is too restrictive. Instead, we assign a unique memory location in the parent directory’s inode for each possible pathname. We then model pathname creation and deletion system calls as stores to the designated location, pathname lookup system calls as loads from that location, and read directory system calls as loads from the entire pathname space under that directory.

Memory ranges are also useful to model *wait system calls* which may block on events and *wakeup system calls* which may trigger events. Example wait and wakeup system calls include `wait` and `exit`, respectively, and a blocking `read` from a pipe and a `write` to the pipe, respectively. To model the effect of wait and wakeup system calls, we use a special location in the abstract memory of the resource involved. Wait system calls are modeled as *loads* from that location, and wakeup system calls are modeled as *stores* to that location. For instance, the `exit` system call does a *store* to

Syscall	Micro-Op	Kernel Object
open	store	file-table
	load	inodes of path components
	store	inode of directory, if O_CREAT
	load	inode of file, if no O_CREAT
write	load	inode of file, if O_TRUNC
	store	data of file (range), if O_TRUNC
	load	process file-table
	store	file handle of file
read	store	inode of file
	load	data of file (range)
	load	process file-table
	store	file handle of file
getdents	load	inode of file, if regular file
	store	inode of file, if a stream
	load	data of file (range)
	load	process file-table
execve	store	file handle of directory
	load	inode of directory
	load	data of directory (range)
	load	inodes of path components
clone	store	data of <code>/proc/self/status</code>
	store	data of <code>/proc/self/cmdline</code>
	load	process memory map
exit	store	data of <code>/proc</code> directory
	store	'pid' of self
wait	store	'ppid' of re-parented children
	load	data of <code>/proc</code> directory
getppid	load	'pid' of reaped child
	load	'ppid' of self

Table 3: *Micro-operations of common system calls.*

the special location associated with the parent process ID, and the `getppid` system call does a *load* from the same location.

Table 3 shows the template of micro-operations that RACEPRO uses to model nine common system calls: `open`, `write`, `read`, `getdents`, `execve`, `clone` (fork a process), `exit`, `wait`, and `getppid`. The `open` system call accesses several resources. It stores to the process file-table to allocate a new file descriptor, loads from the inodes of the directories corresponding to the path components, stores to the inode of the parent directory if the file is being created or loads from the file's inode otherwise, and stores to the entire data range of the inode if the file is being truncated.

The `write`, `read`, and `getdents` system calls access three resources: process file-table, file handle, and inode. `write` loads from the process file-table to locate the file handle, stores to the file handle to update the file position, stores to the meta-data of the file's inode in the file system, and stores to the affected data range of the file's inode. The last two micro-operations both affect the file's inode, but at different offsets. `read` from a regular file and `getdents` are similar to `write`, except that they load from the respective file's or directory's inode. `read` from a stream, such as a socket or a pipe, is also similar, except that it consumes data and thus modifies the inode's state, so it is modeled as a store to the corresponding inode.

The `execve` system call accesses several resources. It loads from the inodes of the directories corresponding to the path components. It also stores to the inodes of the `status` and `cmdline` files in the `/proc` directory entry of the process, to reflect the newly executed program name and command line.

The `clone`, `exit`, and `wait` system calls access two resources. `clone` loads from the process's memory map to create a copy for the newborn child, and stores to the `/proc` directory inode to reflect

the existence of a new entry in it. `exit` stores to the pid resource of the current process to set the zombie state, and stores to the ppid resource of its children to reparent them to init. `wait` stores to the reaped child's pid resource to change its state from zombie to dead, and stores to the `/proc` directory inode to remove the reaped child's entry. RACEPRO detects races between `exit` and `wait` based on accesses to the exiting child's pid resource. Similarly, `getppid` loads from the current process's ppid resource, and RACEPRO detects races between `exit` and `getppid` based on accesses to the ppid resource.

To account for system calls that operate on streams of data, such as reads and writes on pipes and sockets, we maintain a virtual write-offset and read-offset for such resources. These offsets are advanced in response to write and read operations, respectively. Consider a stream object with write-offset L_W and read-offset L_R . A `write(fd, buf, n)` is modeled as a *store* to the memory range $[L_W..L_W + n]$ of the object, and also advances L_W by n . A `read(fd, buf, n)` is modeled as a *load* from the memory range $[L_R..L_R + \tilde{n}]$, where $\tilde{n} = \min(L_W - L_R, n)$, and also advances L_R by \tilde{n} .

To account for the effects of signal delivery and handling, we model signals in a way that reflects the possibility of a signal to affect any system call, not just the one system call that was actually affected in the recording. We associate a unique abstract memory location with each signal. A `kill` system call that sends a signal is modeled as a *store* to this location. Each system call in the target process is considered to access that location, and therefore modeled as a *load* from all the signals. This method ensures that any system call that may be affected by a signal would access the shared object that represents that signal.

5.3 Race Detection Algorithms

Building on the happens-before graph and the modeling of system calls as micro-operations, RACEPRO detects three types of process races: load-store races (§5.3.1), wait-wakeups races (§5.3.2), and wakeup-waits races (§5.3.3). RACEPRO may also be extended to detect other types of races (§5.3.4).

5.3.1 Load-Store Races

A load-store race occurs when two system calls concurrently access the same shared object and at least one is a *store* operation. In this case, the two system calls could have executed in the reverse order. RACEPRO flags two system calls as a load-store race if (1) they are concurrent; (2) they access the same shared kernel object, and (3) at least one access is a *store*. In the `ps | grep X` example shown in Figure 7, the system calls `read` and `execve` are flagged as a race because they are concurrent, they access the same resource, and at least one, `execve`, does a *store*. In contrast, the system call `exit` of P_3 also stores to the same resource, but is not flagged as a race because it is not concurrent with any of them as `read` happens-before `exit` and `execve` happens-before `exit`.

RACEPRO detects load-store races using a straightforward happens-before-based race detection algorithm. We chose a happens-before over lockset because processes rarely use standard locks (§2). RACEPRO iterates through all the shared kernel objects in the recording. For each shared object, it considers the set of all accesses to that object by all system calls, and divides this set into per-process lists, such that the list L_i of process P_i contains all the accesses performed by that process. RACEPRO now looks at all pairs of processes, $P_i, P_j, i \neq j$, and considers their accesses to the object. For each access $S_n \in L_i$, it scans through the accesses $S_m \in L_j$. If the vector-clocks of S_n and S_m are concurrent, the pair of system calls is marked as a race. If $S_n \rightarrow S_m$, then $S_n \rightarrow S_{m+k}$, so the scan is aborted and the next access $S_{n+1} \in L_i$

is considered. If $S_m \rightarrow S_n$, then $S_m \rightarrow S_{n+k}$, so $S_{m+1} \in L_j$ is saved so that the next scan of accesses from L_j will start from S_{m+1} , since we know that earlier events happened-before all remaining accesses in L_i .

Because system calls may access more than one shared object during their execution, it is possible that the same pair of system calls will be marked more than once. For example, two `write` system calls from different processes to the same location in the same file will be marked twice, once when the meta-data of the inode is considered, and once when the data of the file is considered. Because RACEPRO detects and later validates (§6) races at the granularity of system calls, it only reports the respective pair of system calls once.

RACEPRO may produce a myriad of races, which can take a long time to produce and later validate. To address this concern, RACEPRO prioritizes which races to examine in two ways. First, RACEPRO may defer or entirely skip races that are less likely to prove harmful, depending on the system calls and resource involved. For example, when analyzing the execution of a parallel compilation, resources related to visual output may be skipped: although many processes may be writing to the standard output, races, if they exist, are likely to be benign. Second, RACEPRO ranks pairs of system calls according to their distance from each other in the happens-before graph, and examines nearer system calls first.

5.3.2 Wait-Wakeups Races

A wait-wakeups race occurs when a wait system call may be woken up by more than a single matching wakeup system call. If the wakeup system calls executed in a different order, the wait system call could have picked a different wakeup than in the original execution. Wait-wakeups races involve at least three system calls. For instance, a `wait` system call which does not indicate a specific process identifier to wait for will complete if any of its children terminate. Likewise, a blocking `read` from a stream will complete after any `write` to the stream.

In these cases, the wait system call essentially uses a *wildcard* argument for the wakeup condition so that there can be multiple system calls that match the wakeup condition depending on their order of execution. The wait-wakeups race requires a wildcard, otherwise there is only a single matching system call, and thus a single execution order. For instance, a `wait` system call that requests a specific process identifier must be matched by the exit of that process. In this case, the wait-wakeup relationship implies an inherent happens-before edge in the happens-before graph, since the two system calls must always occur in that order.

RACEPRO flags three system calls as a wait-wakeups race if (1) one is a wait system call, (2) the other two are wakeup system calls that match the wait condition, and (3) the wait system call did not happen-before any of the wakeup system calls. In the `ps | grep X` example shown in Figure 7, the two `exit` system calls of P_2 and P_3 and the first `wait` system call of P_1 are flagged as a wait-wakeups race since both `exit` calls are concurrent and can match the `wait`. In contrast, the `write` and `read` system calls to and from the pipe are not flagged as a race, because there does not exist a second wakeup system call that matches the `read`.

RACEPRO detects wait-wakeups races using an algorithm that builds on the load-store race detection algorithm, with three main differences. First, the algorithm considers only those accesses that correspond to wait and wakeup system calls by looking only at locations in the abstract memory reserved for wait and wakeup actions. Second, it considers only pairs of accesses where one is a *load* and the other is a *store*, corresponding to one wait and one wakeup system calls. The wait system call must not happen-before the wakeup

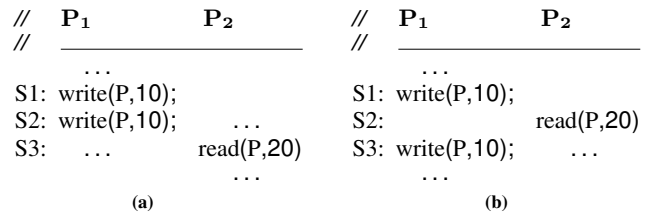


Figure 8: *Wait-wakeups races in streams.*

system call. Third, for each candidate pair of wait and wakeup system calls S_1 and S_2 , RACEPRO narrows its search to the remaining wakeup system calls that match the wait system call by looking for system calls that store to the same abstract memory location. For each matching wakeup system call S_3 , RACEPRO checks whether it would form a wait-wakeups race together with S_1 and S_2 .

The relative order of the wakeup system calls may matter if their effect on the resource is cumulative. For instance, Figure 8 depicts a cumulative wait-wakeups scenario in which the order of two `write` system calls to the same stream determines what a matching `read` would observe. A `read` from a stream may return less data than requested if the data in the buffer is insufficient. In Figure 8a, a blocking `read` occurs after two `writes` and consumes their cumulative data. However, in Figure 8b, the `read` occurs before the second `write` and returns the data only from the first `write`. Note that S_2 and S_3 in Figure 8a do not form a load-store race as S_2 inherently happens-before S_3 . Thus, RACEPRO flags either case as a wait-wakeups race. The relative order of the wakeup system calls does not matter if their effect on the resource is not cumulative, such as with `wait` and `exit` system calls.

5.3.3 Wakeup-Waits Races

A wakeup-waits race occurs when a wakeup system call may wake up more than a single matching wait system call. Like wait-wakeups races, wakeup-waits races involve at least three system calls. For example, a `connect` system call to a listening socket will wake up any processes which may have a pending `accept` on that socket; the popular Apache Web server uses this method to balance incoming requests. As another example, a signal sent to a process may interrupt the process during a system call. Depending on the exact timing of events, the signal may be delivered at different times and interrupt different system calls.

Some wakeup system calls only affect the first matching wait system call that gets executed; that system call “consumes” the wakeup and the remaining wait system calls must wait for a subsequent wakeup. Examples include `connect` and `accept` system calls, and `read` and `write` system calls on streams. In contrast, when two processes monitor the same file using the `select` system call, a file state change will notify both processes equally. Even in this case, a race exists as the behavior depends on which wait system calls executes first.

RACEPRO flags three system calls as a wakeup-waits race if (1) one is a wakeup system call, (2) the other two are wait system calls that match the wakeup, (3) the wait system calls did not happen-before the wakeup system call. To detect wakeup-waits races, RACEPRO builds on the wait-wakeups race detection algorithm with one difference. For each candidate pair of wait and wakeup system calls S_1 and S_2 , RACEPRO narrows its search to the remaining wait system calls that match the wakeup system call by looking for system calls that load from the same abstract memory location. For each matching wait system call S_3 , RACEPRO checks whether it would form a wakeup-waits race together with S_1 and S_2 .

5.3.4 Many-System-Calls Races

RACEPRO's algorithms handle races that involve two system calls for load-store races, and three system calls for both wait-wakeups and wakeup-waits races. However, it is also possible that a race involves more system calls. For example, consider a load-store race that comprises a sequence of four system calls that only if executed in the reverse order, from last to first, will produce a bug. RACEPRO's algorithm will not detect this load-store race since it only considers one pair of system calls at a time. To detect such races, the algorithms can be extended to consider more system calls at a time and more complex patterns of races. An alternative approach is to apply RACEPRO's analysis recursively on modified executions (§6.2).

6 Validating Races

A detected process race may be either benign or harmful, depending on whether it leads to a failure. For instance, consider the `ps | grep X` example again which may output either N or $N + 1$ lines. When run from the command line, this race is usually benign since most users will automatically recognize and ignore the difference. However, for applications that rely on one specific output, this race can be harmful and lead to a failure (§7).

To avoid false positives, RACEPRO validates whether detected races are harmful and reports only harmful races as bugs. For each race, it creates an execution branch in which the racy system calls, which we refer to as *anchor* system calls, would occur in a different order from the original recorded execution (§6.1). It replays the modified execution until the race occurs, then makes the execution go-live (§6.2). It checks the live execution for failures (§6.3), and, if found, reports the race as a bug.

6.1 Creating Execution Branches

RACEPRO does not replay the original recorded execution, but instead replays an execution branch built from the original execution in a controlled way. The execution branch is a truncated and modified version of the original log file. Given a detected race which, based on its type, involves two or three anchor system calls, RACEPRO creates an execution branch in two steps. First, it copies the sequence of log events from the original execution recording *up to* the anchor system calls. Then, it adds the anchor system calls with suitable ordering constraints so that they will be replayed in an order that makes the race resolve differently than in the original recorded execution. The rest of the log events from the original execution are not included in the modified version.

A key requirement in the first step above is that the definition of *up to* must form a *consistent cut* [22] across all the processes to avoid deadlocks in replay. A consistent cut is a set of system calls, one from each process, that includes the anchor system calls, such that all system calls and other log events that occurred before this set are on one side of the cut. For instance, if S_1 in process P_1 happens-before S_2 in process P_2 and we include S_2 in the consistent cut, then we must also include S_1 in the cut.

To compute a consistent cut for a set of anchor system calls, RACEPRO simply merges the vector-clocks of the anchor system calls into a unified vector-clock by taking the latest clock value for each process. In the resulting vector-clock, the clock value for each process indicates the last observed happens-before path from that process to any of the anchor system calls. By definition, the source of this happens-before edge is also the last system call of that process that must be included in the cut. For instance, the unified vector-clock for the `read` and `execve` race in Figure 7 is [3, 3, 2], and the consistent cut includes the second `fork` of P_1 , `read` of P_2 , and `execve` of P_3 .

Given a consistent cut, RACEPRO copies the log events of each process, except the anchor system calls, until the clock value for that process is reached. It then adds the anchors in a particular order. For load-store races, there are two anchor system calls. To generate the execution branch, RACEPRO simply flips the order of the anchors compared to the original execution; it first adds the system call that occurred *second* in the original execution, followed by the one that occurred *first*. It also adds an ordering constraint to ensure that they will be replayed in that order.

For wait-wakeups races, there are three anchor system calls: two wakeup system calls and a wait system call. To generate the execution branch, RACEPRO first adds both wakeup system calls, then adds a modified version of the wait system call in which its wildcard argument is replaced with a specific argument that will match the wakeup system call that was *not* picked in the original execution. For example, consider a race with two child processes in `exit`, either of which may wake up a parent process in `wait`. RACEPRO first adds both `exit` system calls, then the `wait` system call modified such that its wildcard argument is replaced by a specific argument that will cause this `wait` to pick the `exit` of the child that was not picked in the original execution. It also adds a constraint to ensure that the parent will execute after that child's `exit`. The other child is not constrained.

For wakeup-waits races, there are also three anchor system calls: one wakeup system call and two wait system calls. To generate the execution branch, RACEPRO simply flips the order of the two wait system calls compared to the original execution. Races that involve signals, which may be delivered earlier or later than in the original execution, are handled differently. To generate an execution branch for a signal to be delivered earlier, RACEPRO simply inserts the signal delivery event at an earlier location which is thereby considered one of the anchors of the consistent cut. In contrast, delivering a signal arbitrarily later is likely to cause replay divergence (§6.2). Instead, RACEPRO only considers delivering a signal later if it interrupted a system call in the recorded execution, in which case the signal is instead delivered promptly after the corresponding system call completes when replayed.

Reordering of the anchor system calls may also imply reordering of additional system calls that also access the same resources. Consider the execution scenario depicted in Figure 9, which involves three processes and five system calls that access the same resource. The system calls S_1 and S_5 form a load-store race. To generate the modified execution for this race, RACEPRO will make the following changes: (1) it will include S_1 but not S_2 , because system calls following the anchors remain outside the cut and are truncated; (2) it will reorder S_5 , and therefore S_4 too, with respect to S_1 ; and (3) depending on the consistent cut, it will either exclude S_3 or reorder S_3 with respect to S_1 . RACEPRO adjusts the modified recording so that it will enforce the new partial order of system calls instead of the partial order of system calls in the original execution.

6.2 Replaying Execution Branches and Going Live

RACEPRO's replayer provides deterministic replay of the originally recorded execution and also ensures that successful replay of a modified execution is also deterministic. Given a modified execution, RACEPRO replays each recorded event while preserving the partial order indicated by the recording. The last events replayed are the anchor system calls. To force races to resolve as desired, RACEPRO replays the anchor system calls serially, one by one, while holding the remaining processes inactive. From that point onward, it allows the processes to go live to resume normal execution.

Go Live. The ability to go live by resuming live execution from a replay is fundamental for allowing RACEPRO to validate whether

```

//      P1      P2      P3
//      -----
...
S1:  syscall(R);
S2:  syscall(R);
S3:  ...          ...    syscall(R);
S4:  ...          syscall(R)  ...
S5:  ...          syscall(R)
...

```

Figure 9: *Replay divergence due to reordering.*

races manifest into real bugs or not, and thereby avoid reporting false-positives. To go live, RACEPRO faces two challenges. First, RACEPRO must ensure that replayed processes perceive the underlying system to be the same as at the time of recording. For example, system identifiers such as process IDs must remain the same for processes to run correctly after they transition to live execution. RACEPRO leverages OS virtualization to encapsulate processes in a virtual execution environment that provides the same private, virtualized view of the system when the session is replayed or goes live as when it was recorded [17]. Processes only see virtual identifiers that always stay the same so that the session can go live at any time. Second, RACEPRO needs to not only replay the application state in user-space, but also the corresponding state that is internally maintained by the operating system for the processes. For example, actions such as creating a pipe and writing to it must be done as is so that the pipe exists and has suitable state should the process transition to live execution.

RACEPRO works best when a go-live execution requests no inputs from users or external processes; such executions include parallel make, parallel boot, and executions of non-interactive programs. If a go-live execution requests external inputs, RACEPRO tries to replay the inputs recorded from the original execution. Currently RACEPRO replays standard inputs from users and pipe or socket data received from external processes. It does not replay data read from the file system. Instead, it checkpoints the file system before recording an execution and restores to this checkpoint before each replay, using unionfs [29], which has low overhead. Replaying inputs may not always work because the go-live execution differs from the original execution, but we have not found it a problem in our evaluation because tightly coupled processes should be recorded together anyway.

RACEPRO can be applied recursively to detect races involving more system calls (§5.3.4). Since it already records the go-live portion of modified executions, doing so is as easy as running the same detection logic on these new recordings. This essentially turns RACEPRO into a model checker [12]. However, we leave this mode off by default because exhaustive model checking is quite expensive and it is probably more desirable to spend limited checking resources on real executions over the fake checking-generated executions.

Replay Divergence. RACEPRO’s replayer may not be able to replay some execution branches due to *replay divergence*. This can result from trying to replay a modified recording instead of the original recording. Replay divergence occurs when there is a mismatch between the actual actions of a replayed process and what is scripted in the execution recording. The mismatch could be between the actual system call and the expected system call or, even if the system calls match, between the resources actually accessed by the system call and the resources expected to be accessed. When a divergence failure occurs for some execution branch, RACEPRO does not flag the corresponding race as a bug because it lacks evidence to that end.

```

//      P1      P2      //      P1      P2
//      -----      //      -----
...
S1:  creat(F);      ...      S1:  write(F,x);      ...
S2:  ...      r=unlink(F);      S2:  ...      read(F,b);
           if (r==0)
S3:  ...      creat(F);      S3:  ...      write(F,y);
           ...
(a)                                     (b)

```

Figure 10: *Replay divergence examples.*

Divergence is commonly caused when the reordering of the anchor system calls implies reordering of additional system calls that also access the same resources. Consider again the execution scenario depicted in Figure 9 in which the system calls S_1 and S_5 form a load-store race and the modified execution branch reorders the systems calls as S_3, S_4, S_5 , and S_1 while dropping S_2 as being outside the cut. A replay divergence may occur if the execution of S_5 depended on S_2 which was dropped out, or if the execution of S_4 depends on S_1 which was reordered with respect to S_4 . Figure 10a illustrates the former scenario. Reordering the two `creat` system calls would cause P_2 to call `unlink` before P_1 ’s `creat`. The call will fail and P_2 will not call `creat` and thus diverge from the recorded execution.

Divergence can also be caused when processes rely on a specific execution ordering of system calls in a way that is not tracked by RACEPRO. Figure 10b illustrates one such scenario where process P_1 executes system call S_1 to write data to a file, and process P_2 ’s execution depends on data read from file by S_2 . If P_2 depends on the specific data written by S_1 , then reordering S_1 and S_2 will almost certainly cause a divergence. Were the dependency on the file’s content considered an inherent happens-before $S_1 \rightarrow S_2$, RACEPRO’s explorer would not have flagged the race in the first place. However, it is prohibitively expensive, and in some cases impossible, to track generic semantics of applications.

Another cause for divergence is use of shared memory. Recall that shared memory accesses are tracked by the recorder and enforced by the replayer. However, reordering of system calls may lead to reordering of shared memory accesses as well, which will certainly lead to replay divergence. RACEPRO mitigates this effect by permitting *relaxed* execution from where the reordering takes place. In this mode the replayer does not enforce memory access ordering, but continues to enforce other ordering constraints such as partial ordering of system calls. This improves the chances that the replayed execution reach the point of go-live. However, accesses to shared memory may now resolve arbitrarily and still cause divergence. For this reason RACEPRO is likely to be less effective in finding races on OS resources between threads of the same process. We believe that such races are relatively unlikely to occur.

Replay divergence is reportedly a serious problem for a previous race classifier [25], where it can occur for two reasons: the race being validated does occur and causes the execution to run code or access data not recorded originally, or the race being validated cannot occur and is a false positive. In contrast, replay divergence actually *helps* RACEPRO to distinguish root-cause races from other races. By relying on a replay followed by transition to live execution, RACEPRO is no longer concerned with the first scenario. If replay diverges, RACEPRO can tell that the race is a false positive and discard it.

Moreover, if the divergence is not due to untracked interactions or shared memory discussed above (or file locking, also untracked by RACEPRO), then there must exist another race that is “tighter” than the one being validated. The other race may involve the same

Bug ID	Description
debian-294579	concurrent <code>adduser</code> processes read and write <code>/etc/passwd</code> without synchronization, corrupting this file
debian-438076	<code>mv</code> unlinks the target file before calling atomic <code>rename</code> , violating the atomicity requirement on <code>mv</code>
debian-399930	<code>logrotate</code> creates a new file then sets it writable, but daemons may observe it without write permissions
redhat-54127	<code>ps grep race</code> causes a wrong version of <code>licq 7.3</code> to be started
launchpad-596064	<code>upstart</code> does not wait until <code>smbd</code> creates a directory before spawning <code>nmbd</code> , which requires that directory
launchpad-10809	<code>bash</code> updates the history file without synchronization, corrupting this file
new-1	<code>tcsh 6.17</code> updates the history file without synchronization, even when “savehist merge” is set
new-2	<code>updatedb</code> removes old database before renaming the new one, so <code>locate</code> finds nothing (<code>findutils 4.4.2</code>)
new-3	concurrent <code>updatedb</code> processes may cause the database to be empty
new-4	incorrect dependencies in Makefile of <code>abr2gbr 1.0.3</code> may causes compilation failure

Table 4: Bugs found by RACEPRO. Bugs are identified by “distribution - bug ID”. New bugs are identified as “new - bug number”

resource or a different one. For example, in Figure 10b the race between S_1 and S_3 causes divergence because of another race between S_1 and S_2 . The latter race is “tighter” in the sense that S_2 is closer to S_1 because $S_2 \rightarrow S_3$; the race between S_1 and S_2 subsumes the race between S_1 and S_3 . In other words, discarding races that cause replay divergence helps RACEPRO to find root-cause races. We believe the go-live mechanism can benefit existing replay-based thread-race classifiers.

6.3 Checking Execution Branches

When the replay of an execution branch switches to live execution, RACEPRO no longer controls the execution. Rather, it records the execution from that point on, and activates a checker to monitor the execution for failures or incorrect behavior. If the checker detects a failure that did not occur during recording, it reports a bug and saves the combined execution recording, consisting of the original recording followed by the new recording, so that users can deterministically replay it for debugging.

RACEPRO provides a set of built-in checkers to detect bad application behavior. The built-in checker can detect erroneous behavior such as segmentation faults, infinite loops (via timeouts), error messages in system logs, and failed commands with non-zero exit status. In addition, RACEPRO can also run system-provided checker programs such as `fsck`.

Moreover, RACEPRO allows users to plug in domain-specific checkers. To do so, a user need only provide a program or even a shell script that will run concurrently along the live execution. For instance, such scripts could compare the output produced by a modified execution to that of the original execution, and flag significant differences as errors. It is also possible to use existing test-suites already provided with many application packages. These test-suites are particularly handy if the target application is a server. For instance, both the Apache web server and the MySQL database server are shipped with basic though useful test suites, which could be executed against a modified server. Finally it may also compare the output of the go-live execution with a linearized run [13].

By running checkers on live executions, RACEPRO guarantees that observed failures always correspond to real executions, thus eliminating false positives if the checkers are accurate. Moreover, the process races RACEPRO detects are often the root cause of the failures, aiding developers in diagnosis. In rare cases, after a modified execution goes live, it may encounter an unrelated bug. RACEPRO still provides an execution recording useful for debugging, but without pointing out the root-cause.

As in many other checking frameworks, RACEPRO can detect only what is checked. Although its built-in checkers can detect many errors (§7.1), it may miss domain-specific “silent” corruptions. Fortunately, recent work has developed techniques to check advanced properties such as conflict serializability or linearizability [13], which RACEPRO can leverage.

RACEPRO may have false negatives. A main source is that RACEPRO is a dynamic tool, thus it may miss bugs in the executions that do not occur. Fortunately, by checking deployed systems, RACEPRO increases its checking coverage. A second source is checker inaccuracy. If a checker is too permissive or no checker is provided to check for certain failures, RACEPRO would miss bugs.

7 Experimental Results

We have implemented a RACEPRO prototype in Linux. The prototype consists of Linux kernel components for record, replay, and go-live, and a Python user-space exploration engine for detecting and validating races. The current prototype has several limitations. For replaying executions and isolating the side effects of replay, RACEPRO must checkpoint system states. It currently checkpoints only file system states, though switching to better checkpoint mechanism [27] is straightforward. RACEPRO detects idle state simply by reading `/proc/loadavg`, and can benefit from a more sophisticated idle detection algorithm [34].

Using the RACEPRO prototype, we demonstrated its functionality in finding known and unknown bugs, and measured its performance overhead. For our experiments, the software used for RACEPRO was Linux kernel 2.6.35, Python 2.6.6, Cython 0.14, Networkx 1.1-2, and UnionFs-Fuse 0.23.

7.1 Bugs Found

We evaluated RACEPRO’s effectiveness by testing to see if it could find both known and unknown bugs. To find known bugs, we used RACEPRO on 6 bugs from our study. Bugs were selected based on whether we could find and compile the right version of the software and run it with RACEPRO. Some of the bugs in §2 are in programs that we cannot compile, so we excluded them from the experiments. For each known bug, we wrote a shell script to perform the operations described in the bug report, without applying any stress to make the bug easily occur. We ran this shell script without RACEPRO 50 times, and observed that the bug never occurred. We then ran RACEPRO with the script to detect the bug.

To find unknown bugs, we used four commonly used applications. We applied RACEPRO to the `locate` utility and `updatedb`, a utility to create a database for `locate`. These two utilities are commonly used and well tested, and they touch a shared database of file names, thus they are likely to race with each other. Inspired by the history file race in `bash`, we applied RACEPRO to `tcsh`. `tcsh` has a “savehist merge” option, which should supposedly merge history files from different windows and sessions. Because compilation of software packages often involves multiple concurrent and interdependent processes, we also applied RACEPRO to the `make -j` command.

Table 4 shows all the bugs RACEPRO found. RACEPRO found a total of 10 bugs, including all of the known bugs selected and 4 previously unknown bugs. We highlight a few interesting bugs. Of the

Name	Statistics			Number of Races				Execution Times [seconds/race]			
	Processes	Syscalls	Resources	Detected	Diverged	Benign	Harmful	Record	Replay	Generate	Validate
debian-294579	19	5275	658	4232	3019	1171	42	2.47	2.43	3.42	2.92
debian-438076	21	1688	213	50	0	46	4	3.76	0.75	0.84	2.87
debian-399930	10	1536	279	17	0	13	4	0.59	0.57	0.75	0.84
redhat-54127	14	1298	229	35	15	16	4	0.27	0.25	0.66	0.41
launchpad-596064	34	5564	722	272	267	3	2	21.45	3.11	2.49	1.70
launchpad-10809	13	1890	205	143	117	16	10	0.27	0.25	0.81	0.44
new-1	12	2569	201	137	90	33	14	0.56	0.54	1.52	0.76
new-2	47	2621	467	82	13	27	42	0.89	0.88	1.44	1.16
new-3	30	4361	2981	17	0	13	4	2.63	2.61	2.34	2.98
new-4	19	4672	716	8	0	7	1	1.01	0.98	4.81	1.35

Table 5: *Bug detection statistics*. **Processes** is the number of processes, **Syscalls** the number of system calls occurred, and **Resources** the number of distinct shared resources tracked in the recorded executions. For races, **Detected** is the number of races detected by RACEPRO, **Diverged** the races for which the replay diverged (*i.e.*, false positive), **Benign** the benign races, and **Harmful** harmful races that led to failures. **Record** and **Replay** are the times to record and replay the executions, respectively. **Generate** is the average time to generate an execution branch and **Validate** the average time to validate a race.

known bugs, the `debian-294579` bug is the most serious: it leads to corruption of `/etc/passwd` since `adduser` does not synchronize concurrent reads and writes of `/etc/passwd`. This bug was triggered when an administrator tried to import users from `OpenLDAP` to a local machine.

The `redhat-54127` bug is due to the `ps | grep X` race. Instant messenger program `licq` uses `ps | grep` to detect whether KDE or Gnome is running. Due to the race in `ps | grep`, `licq` sometimes believes a windows manager is running when it in fact is not, thus loading the wrong version of `licq`.

The 4 previously unknown bugs were named `new-1`, `new-2`, `new-3`, and `new-4`. In the `new-1` bug, RACEPRO found that `tcsh` writes to its history file without proper synchronization, even when “`savehist merge`” is set. This option is supposed to merge history across windows and sessions, but unfortunately, it is not implemented correctly.

In the `new-2` bug, RACEPRO found that when `locate` and `updatedb` run concurrently, `locate` may observe an empty database and return zero results. The reason is that `updatedb` unlinks the old database, before calling `rename` to replace it with the new database. This unlink is unnecessary as `rename` guarantees atomic replacement of the destination link.

In the `new-3` bug, RACEPRO found that when multiple instances of `updatedb` run concurrently, the resultant database may be corrupted. Multiple `updatedb` processes may exist, for example, when users manually run one instance while `cron` is running another. While `updatedb` carefully validates the size of the new database before using it to replace the old one, the validation and replacement are not atomic, and the database may still be corrupted.

In the `new-4` bug, RACEPRO found that in the compilation of `abr2gbr`, a package to convert between image formats, the build process may fail when using `make -j` for parallel compilation. The reason is that the dependencies defined in the Makefile are incomplete, which produces a race condition between the creation of an `$OBJDIR` directory and the use of that directory to store object files from the compilation.

7.2 Bug Statistics

Table 5 shows various statistics for each detected bug, including the number of processes involved (Processes), the number of system calls recorded (Syscalls), the number of unique shared resources tracked (Resources), the total number of races detected (Races), the number of races in which the replay diverged (Diverged), the number of benign races (Benign), and the number of harmful races

(Harmful). The number of processes tends to be large because when running a shell script, the shell forks a new process for each external command. The number of system calls in the recorded executions ranges from 1,298 to 5,564. The number of distinct shared resources accessed by these system calls ranges from 201 to 2,981.

The number of races that RACEPRO detects varies across different bugs. For instance, RACEPRO detected only 17 races for `debian-399930`, but it detected over 4,000 races for `debian-294579`. Typically only a small number of races are harmful, while the majority are benign, as shown by the Benign column. In addition, RACEPRO effectively pruned many false positives as shown by the Diverged column. These two columns together illustrate the benefit of the replay and go-live approach.

The mapping between harmful races and bugs is generally many-to-one. There are multiple distinct races that produce the same or similar failures due to a common logical bug. There are two main reasons why a single programming error may result in multiple races. First, a bug may occur in a section of the code that is executed multiple times, for instance in a loop, or in a function called from multiple sites. Thus, there can be multiple races involving distinct instances of the same resource type; RACEPRO will detect and validate each independently. Second, a bug such as missing locks around critical sections may incorrectly allow reordering of more than two system calls, and each pair of reordered system calls could produce a distinct race.

In most cases, we relied on built-in checkers in RACEPRO to detect the failures. For instance, RACEPRO caught bug `launchpad-596064` by using `grep` to find error messages in standard daemon logs, and it caught bugs `debian-438076`, `debian-399930`, `new-2`, `new-3`, and `new-4` by checking for the exit status of programs. Writing checkers to detect other cases was also easy, and required just one line in all cases. For example, for `debian-294579`, `launchpad-10809`, and `new-1`, we detected the failures simply using a `diff` of the old and new versions of the affected file.

7.3 Performance Overhead

Low recording overhead is crucial because RACEPRO runs with deployed systems. Low replay overhead is desirable because RACEPRO can check more execution branches within the same amount of time. To evaluate RACEPRO’s record and replay overhead, we applied it to a wide range of real applications on an IBM HS20 eServer BladeCenter, each blade with dual 3.06 GHz Intel Xeon CPUs with hyperthreading, 2.5 GB RAM, a 40 GB local disk, interconnected with a Gigabit Ethernet switch. These applications include

(1) server applications such as Apache in multi-process and multi-threaded configurations, MySQL, an OpenSSH server, (2) utility programs such as SSH clients, make, untar, compression programs such as gzip and lzma, and a vi editor, and (3) graphical desktop applications such as Firefox, Acrobat Reader, MPlayer, and OpenOffice. To run the graphical applications on the blade which lacks a monitor, we used VNC to provide a virtual desktop. For application workloads that required clients and a server, we ran the clients on one blade and the server on another. Our results show that RACEPRO's recording overhead was under 2.5% for server and under 15% for desktop applications. Replay speed was in all cases at least as fast as native execution and in some cases up to two orders of magnitude faster. This speedup is particularly useful for enabling rapid race validation. Replay speedup stems from omitted in-kernel work due to system calls partially or entirely skipped, and waiting time skipped at replay. Applications that do neither operations perform the same work whether recording or replaying, and sustain speedups close to 1.

We also measured various overhead statistics involved in finding the bugs listed in Table 5. These measurements were done on an HP DL360 G3 server with dual 3.06 GHz Intel Xeon CPUs, 4 GB RAM, and dual 18 GB local disks. For each bug, Table 5 shows the time to record the execution (Record) and to replay it (Replay), the average time to generate an execution branch for a race from a recorded execution (Generate), and the average time to validate an execution branch for a race (Validate).

In all cases, recording execution times were within 3% of the original execution times without recording, and replaying the execution took less time than the original recorded execution. Replay time for each recording ranged from 250 ms to 1.8 s, providing an upper limit on the time to replay execution branches. Replaying execution branches is generally faster because those branches are truncated versions of the original execution. Replay speedup was near 1 in most cases, but was as high as 7 times for launchpad-596064 due to very long idle times as part of starting up the workload. These results are in line with our other record-replay results for desktop and server applications. In particular, the results demonstrate that RACEPRO recording overhead is low enough to enable its use on deployed systems.

The time for our unoptimized prototype to detect all races was under 350 ms for most bugs, but in some cases as much as 3.8 s. This time correlates roughly with the number of unique shared kernel objects tracked and the number of processes involved. For example, detecting all races for launchpad-596064 took 2.5 s, or less than 0.5 ms per race. The average time to generate an execution branch for a race ranged from 0.66 s to 4.81 s. This time correlates roughly with the number of system calls. The average time to validate a race ranged from 0.44 s to 2.98 s. This time correlates roughly with the replay time.

In most cases, the average time to validate a race was somewhat larger than the time to replay the original execution by 0.3 s to 2 s. The time to validate a race is longer because, in addition to the time to replay the execution branch, it also includes the time to run the go-live execution, run the checker, and perform setup and cleanup work between races. Replaying an execution branch which ends at the anchor system calls is faster than replaying the whole original execution. However, during validation, the remainder of the recorded execution now runs live, which is usually slower than replayed execution. In one case, launchpad-596064, validation was faster than original execution replay because nearly all of the execution branches resulted in replay divergence relatively early, eliminating the additional time it would take to replay the entire execution branches and have them go live.

The Generate and Validate times are averaged per race, so the total time to generate execution branches and validate races will grow with the number of races. However, races are independent of one another, so these operations can be easily done in parallel on multiple machines to speed them up significantly. Overall, the results show that RACEPRO can detect harmful process races not only automatically without human intervention, but efficiently.

8 Related Work

We previously presented in a workshop paper [16] a preliminary design of RACEPRO, without the full design, implementation, and evaluation described in this paper. In the remainder of this section, we discuss closely related work to RACEPRO.

Thread races. Enormous work has been devoted to detecting, diagnosing, avoiding, and repairing thread races (*e.g.*, [11, 24, 25, 30, 36, 38]). However, as discussed in §1, existing systems for detecting thread races do not directly address the challenges of detecting process races. For instance, existing static race detectors work with programs written in only one language [11, 24]; the dynamic ones detect races within only one process and often incur high overhead (*e.g.*, [23]). In addition, no previous detection algorithms as we know of explicitly detect wait-wakeup races, a common type of process races.

Nonetheless, many ideas in these systems apply to process races once RACEPRO models system call effects as *load* and *store* micro-operations. For instance, we may leverage the algorithm in AVIO [21] to detect atomicity violations involving multiple processes; the consequence-oriented method in ConSeq [40] to guide the detection of process races; and serializability or linearizability checking [13].

A recent system, 2ndStrike [14], detects races that violate complex access order constraints by tracking the *typestate* of each shared object. For instance, after a thread calls `close(fd)`, 2ndStrike transits the file descriptor to a “closed” state; when another thread calls `read(fd)`, 2ndStrike flags an error because reads are allowed only on “open” file descriptors. RACEPRO may borrow this idea to model system calls with richer effects, but we have not found the need to do so for the bugs RACEPRO caught.

RACEPRO leverages the replay-classification idea [25] to distill harmful races from false or benign ones. The go-live mechanism in RACEPRO improves on existing work by turning a replayed execution into a real one, thus avoiding replay divergence when a race does occur and changes the execution to run code not recorded.

We anticipate that ideas in RACEPRO can help thread race detection, too. For instance, thread wait and wakeup operations may also pair up in different ways, such as a `sem_post` waking up multiple `sem_down` calls. Similarly, the go-live mechanism can enable other race classifiers to find “root races” instead of derived ones.

TOCTOU races. TOCTOU race detection [32, 33, 35] has been a hot topic in the security community. Similar to RACEPRO, these systems often perform OS-level detection because file accesses are sanitized by the kernel. However, TOCTOU races often refer to specific types of races that allow an attacker to access unauthorized files bypassing permission checks. In contrast, RACEPRO focuses on general process races and resources not only files. Nonetheless, RACEPRO can be used to detect TOCTOU races *in-vivo*, which we leave for future work.

Checking deployed systems. Several tools can also check deployed systems. CrystalBall [37] detects and avoids errors in a deployed distributed system using an efficient global state collection and exploration technique. Porting CrystalBall to detect process races is difficult because it works only with programs written in a special language, and it does checking while the deployed system

is running, relying on network delay to hide the checking overhead. In-vivo testing [8] uses live program states, but it focuses on unit testing and lacks concurrency support.

To reduce the overhead on a deployed system, several systems decouple execution recording from dynamic analysis [7, 26]. RACEPRO leverages this approach to check process races. One difference is that RACEPRO uses OS-level record and replay, which has lower overhead than [7] and, unlike Speck [26], RACEPRO works with both multiprocess and multithreaded applications. In addition, a key mechanism required for validating races is that RACEPRO can faithfully replay an execution and make it go-live at any point, which neither previous system can do.

OS support for determinism and transaction. Our idea to pervasively detect process races is inspired by operating system transactions in TxOS [28] and pervasive determinism in Determinator [5] and dOS [6]. TxOS provides transaction support for heterogeneous OS resources, efficiently and consistently solving many concurrency problems at the OS level. For instance, it can prevent file system TOCTOU attacks. However, as pointed out in [20], even with transaction support, execution order violations may still occur. Determinator advocates a new, radical programming model that converts all races, including thread and process races, into exceptions. A program conforming to this model runs deterministically in Determinator. dOS makes legacy multithreaded programs deterministic even in the presence of races on memory and other shared resources. None of these systems aim to detect process races.

9 Conclusion and Future Work

We have presented the first study of real process races, and the first system, RACEPRO, for effectively detecting process races beyond TOCTOU and signal races. Our study has shown that process races are numerous, elusive, and a real threat. To address this problem, RACEPRO automatically detects process races, checking deployed systems *in-vivo* by recording live executions and then checking them later. It thus increases checking coverage beyond the configurations or executions covered by software vendors or beta testing sites. First, RACEPRO records executions of multiple processes while tracking accesses to shared kernel resources via system calls. Second, it detects process races by modeling recorded system calls as load and store micro-operations to shared resources and leveraging existing memory race detection algorithms. Third, for each detected race, it modifies the original recorded execution to reproduce the race by changing the order of system calls involved in the races. It replays the modified recording up to the race, allows it to resume live execution, and checks for failures to determine if the race is harmful. We have implemented RACEPRO, shown that it has low recording overhead so that it can be used with minimal impact on deployed systems, and used it with real applications to effectively detect 10 process races, including several previously unknown bugs in shells, databases, and makefiles.

Detection of process races is only the first step. Given an execution where a process race surfaces, developers still have to figure out the cause of the race. Fixing process races take time, and before developers produce a fix, systems remain vulnerable. Exploring the possibility of automatically fixing process races and providing better operating system primitives to eliminate process races are important areas of future work.

Acknowledgements

Our shepherd Tim Harris and the anonymous reviewers provided many helpful comments, which have substantially improved the content and presentation of this paper. Peter Du helped with the process race study. Dawson Engler provided early feedback

on the ideas of this paper. This work was supported in part by AFRL FA8650-10-C-7024 and FA8750-10-2-0253, AFOSR MURI FA9550-07-1-0527, and NSF grants CNS-1117805, CNS-1054906 (CAREER), CNS-1012633, CNS-0914845, and CNS-0905246.

10 References

- [1] All resource races studied. <http://rcs.cs.columbia.edu/projects/racepro/>.
- [2] Launchpad Software Collaboration Platform. <https://launchpad.net/>.
- [3] The Debian Almquist Shell. <http://gondor.apana.org.au/~herbert/dash/>.
- [4] Upstart: an Event-Based Replacement for System V Init Scripts. <http://upstart.ubuntu.com/>.
- [5] A. Aviram, S.-C. Weng, S. Hu, and B. Ford. Efficient System-Enforced Deterministic Parallelism. In *Proceedings of the 9th Symposium on Operating Systems Design and Implementation (OSDI '10)*, Oct. 2010.
- [6] T. Bergan, N. Hunt, L. Ceze, and S. D. Gribble. Deterministic Process Groups in dOS. In *Proceedings of the 9th Symposium on Operating Systems Design and Implementation (OSDI '10)*, Oct. 2010.
- [7] J. Chow, T. Garfinkel, and P. M. Chen. Decoupling Dynamic Program Analysis from Execution in Virtual Environments. In *Proceedings of the USENIX Annual Technical Conference (USENIX '08)*, June 2008.
- [8] M. Chu, C. Murphy, and G. Kaiser. Distributed In Vivo Testing of Software Applications. In *Proceedings of the First IEEE International Conference on Software Testing, Verification, and Validation (ICST '08)*, Apr. 2008.
- [9] H. Cui, J. Wu, C.-C. Tsai, and J. Yang. Stable Deterministic Multithreading through Schedule Memoization. In *Proceedings of the 9th Symposium on Operating Systems Design and Implementation (OSDI '10)*, Oct. 2010.
- [10] G. W. Dunlap, D. G. Lucchetti, M. A. Fetterman, and P. M. Chen. Execution Replay of Multiprocessor Virtual Machines. In *Proceedings of the 4th International Conference on Virtual Execution Environments (VEE '08)*, Mar. 2008.
- [11] D. Engler and K. Ashcraft. RacerX: Effective, Static Detection of Race Conditions and Deadlocks. In *Proceedings of the 19th ACM Symposium on Operating Systems Principles (SOSP '03)*, Oct. 2003.
- [12] C. Flanagan and P. Godefroid. Dynamic Partial-Order Reduction for Model Checking Software. In *Proceedings of the 32nd Annual Symposium on Principles of Programming Languages (POPL '05)*, Jan. 2005.
- [13] P. Fonseca, C. Li, and R. Rodrigues. Finding Complex Concurrency Bugs in Large Multi-Threaded Applications. In *Proceedings of the 6th ACM European Conference on Computer Systems (EUROSYS '11)*, Apr. 2011.
- [14] Q. Gao, W. Zhang, Z. Chen, M. Zheng, and F. Qin. 2ndStrike: Towards Manifesting Hidden Concurrency Typestate Bugs. In *Proceedings of the 16th International Conference on Architecture Support for Programming Languages and Operating Systems (ASPLOS '11)*, Mar. 2011.
- [15] Z. Guo, X. Wang, J. Tang, X. Liu, Z. Xu, M. Wu, M. F. Kaashoek, and Z. Zhang. R2: An Application-Level Kernel for Record and Replay. In *Proceedings of the 8th Symposium on Operating Systems Design and Implementation (OSDI '08)*, Dec. 2008.
- [16] O. Laadan, C.-C. Tsai, N. Viennot, C. Blinn, P. S. Du,

- J. Yang, and J. Nieh. Finding Concurrency Errors in Sequential Code—OS-level, In-vivo Model Checking of Process Races. In *Proceedings of the 13th USENIX Workshop on Hot Topics in Operating Systems (HOTOS '11)*, May 2011.
- [17] O. Laadan, N. Viennot, and J. Nieh. Transparent, Lightweight Application Execution Replay on Commodity Multiprocessor Operating Systems. In *Proceedings of the ACM SIGMETRICS Conference on Measurement and Modeling of Computer Systems (SIGMETRICS '10)*, June 2010.
- [18] L. Lamport. Time, Clocks, and the Ordering of Events in a Distributed System. *Comm. ACM*, 21(7):558–565, 1978.
- [19] T. J. LeBlanc and J. M. Mellor-Crummey. Debugging Parallel Programs with Instant Replay. *IEEE Trans. Comput.*, 36(4):471–482, 1987.
- [20] S. Lu, S. Park, E. Seo, and Y. Zhou. Learning from Mistakes: a Comprehensive Study on Real World Concurrency Bug Characteristics. In *Proceedings of the 13th International Conference on Architecture Support for Programming Languages and Operating Systems (ASPLOS '08)*, Mar. 2008.
- [21] S. Lu, J. Tucek, F. Qin, and Y. Zhou. AVIO: Detecting Atomicity Violations via Access Interleaving Invariants. In *Proceedings of the 12th International Conference on Architecture Support for Programming Languages and Operating Systems (ASPLOS '06)*, Oct. 2006.
- [22] F. Mattern. Dynamic Partial-Order Reduction for Model Checking Software. In *Proceedings of the 32nd Annual Symposium on Principles of Programming Languages (POPL '05)*, Oct. 1988.
- [23] M. Musuvathi, S. Qadeer, T. Ball, G. Basler, P. A. Nainar, and I. Neamtiu. Finding and Reproducing Heisenbugs in Concurrent Programs. In *Proceedings of the 8th Symposium on Operating Systems Design and Implementation (OSDI '08)*, Dec. 2008.
- [24] M. Naik, A. Aiken, and J. Whaley. Effective Static Race Detection For Java. In *Proceedings of the ACM SIGPLAN 2006 Conference on Programming Language Design and Implementation (PLDI '06)*, 2006.
- [25] S. Narayanasamy, Z. Wang, J. Tigani, A. Edwards, and B. Calder. Automatically Classifying Benign and Harmful Data Races using Replay Analysis. In *Proceedings of the ACM SIGPLAN 2007 Conference on Programming Language Design and Implementation (PLDI '07)*, June 2007.
- [26] E. B. Nightingale, D. Peek, P. M. Chen, and J. Flinn. Parallelizing Security Checks on Commodity Hardware. In *Proceedings of the 13th International Conference on Architecture Support for Programming Languages and Operating Systems (ASPLOS '08)*, Mar. 2008.
- [27] S. Osman, D. Subhraveti, G. Su, and J. Nieh. The Design and Implementation of Zap: A System for Migrating Computing Environments. In *Proceedings of the 5th Symposium on Operating Systems Design and Implementation (OSDI '02)*, Dec. 2002.
- [28] D. E. Porter, O. S. Hofmann, C. J. Rossbach, A. Benn, and E. Witchel. Operating System Transactions. In *Proceedings of the 22nd ACM Symposium on Operating Systems Principles (SOSP '09)*, Oct. 2009.
- [29] D. P. Quigley, J. Sipek, C. P. Wright, and E. Zadok. UnionFS: User- and Community-oriented Development of a Unification Filesystem. In *Proceedings of the 2006 Linux Symposium*, July 2006.
- [30] K. Sen. Race Directed Random Testing of Concurrent Programs. In *Proceedings of the ACM SIGPLAN 2008 Conference on Programming Language Design and Implementation (PLDI '08)*, June 2008.
- [31] S. M. Srinivasan, S. Kandula, C. R. Andrews, and Y. Zhou. Flashback: A Lightweight Extension for Rollback and Deterministic Replay for Software Debugging. In *Proceedings of the USENIX Annual Technical Conference (USENIX '04)*, June 2004.
- [32] D. Tsafirir, T. Hertz, D. Wagner, and D. Da Silva. Portably Solving File TOCTTOU Races with Hardness Amplification. In *Proceedings of the 6th USENIX Conference on File and Storage Technologies (FAST '08)*, Feb. 2008.
- [33] E. Tsyklevich and B. Yee. Dynamic Detection and Prevention of Race Conditions in File Accesses. In *Proceedings of the 12th Conference on USENIX Security Symposium*, Aug. 2003.
- [34] University of California at Berkeley. Open-Source Software for Volunteer Computing and Grid Computing. <http://boinc.berkeley.edu/>.
- [35] J. Wei and C. Pu. TOCTTOU Vulnerabilities in UNIX-Style File Systems: an Anatomical Study. In *Proceedings of the 4th USENIX Conference on File and Storage Technologies (FAST '05)*, Dec. 2005.
- [36] J. Wu, H. Cui, and J. Yang. Bypassing Races in Live Applications with Execution Filters. In *Proceedings of the 9th Symposium on Operating Systems Design and Implementation (OSDI '10)*, Oct. 2010.
- [37] M. Yabandeh, N. Knezevic, D. Kostic, and V. Kuncak. CrystalBall: Predicting and Preventing Inconsistencies in Deployed Distributed Systems. In *Proceedings of the 6th Symposium on Networked Systems Design and Implementation (NSDI '09)*, Apr. 2009.
- [38] Y. Yu, T. Rodeheffer, and W. Chen. RaceTrack: Efficient Detection of Data Race Conditions via Adaptive Tracking. In *Proceedings of the 20th ACM Symposium on Operating Systems Principles (SOSP '05)*, Oct. 2005.
- [39] M. Zalewski. Delivering Signals for Fun and Profit. Bindview Corporation, 2001.
- [40] W. Zhang, J. Lim, R. Olichandran, J. Scherpelz, G. Jin, S. Lu, and T. Reps. ConSeq: Detecting Concurrency Bugs through Sequential Errors. In *Proceedings of the 16th International Conference on Architecture Support for Programming Languages and Operating Systems (ASPLOS '11)*, Mar. 2011.