

Dry-Martini:

Run PWE3 over Any Sub-IP

Ping Pan

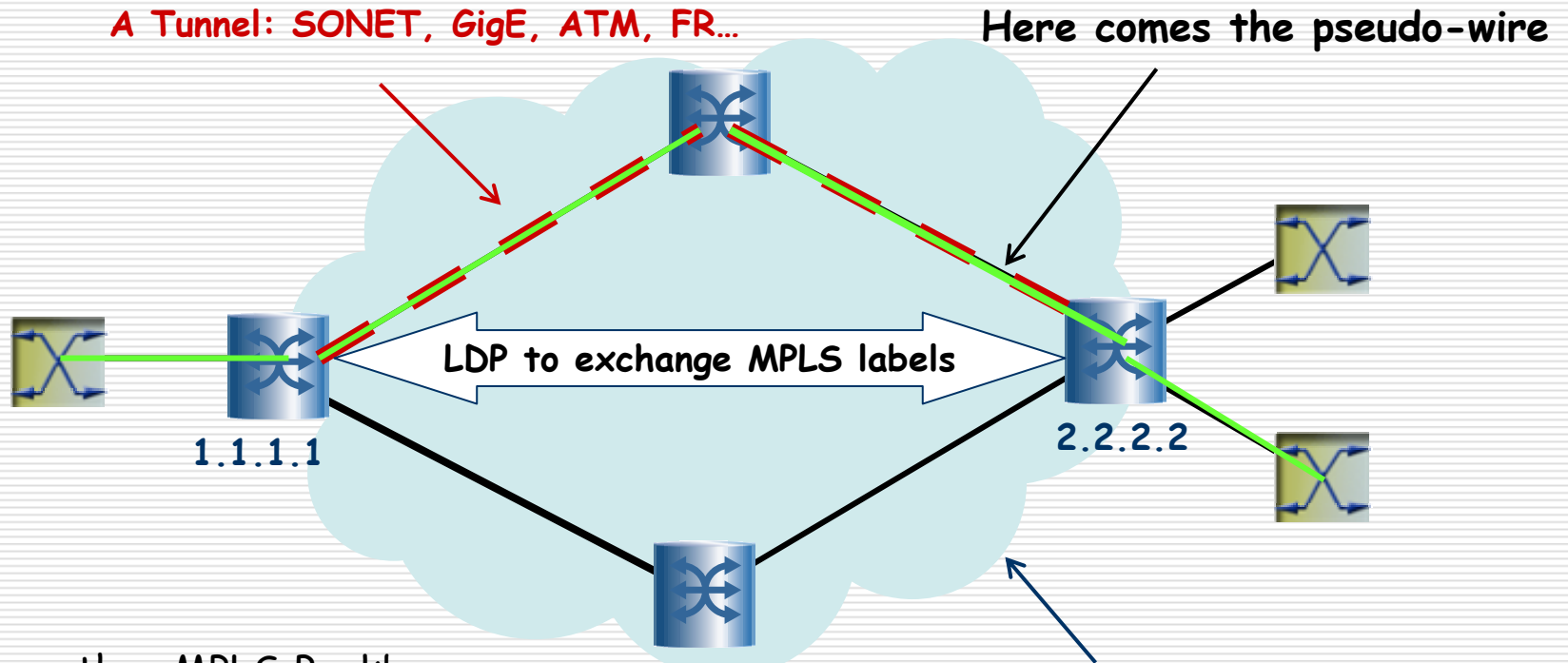
Hammerhead Systems

IETF 60

Pseudo-wire in Perspective

- An IP-centric technology to deal with sub-IP traffic
- An aggregation mechanism
- Draft-martini never excludes the kind of PSN to be used:
 - ... so long there is a tunnel, here comes the pseudo-wires
- So, what's the fuss?

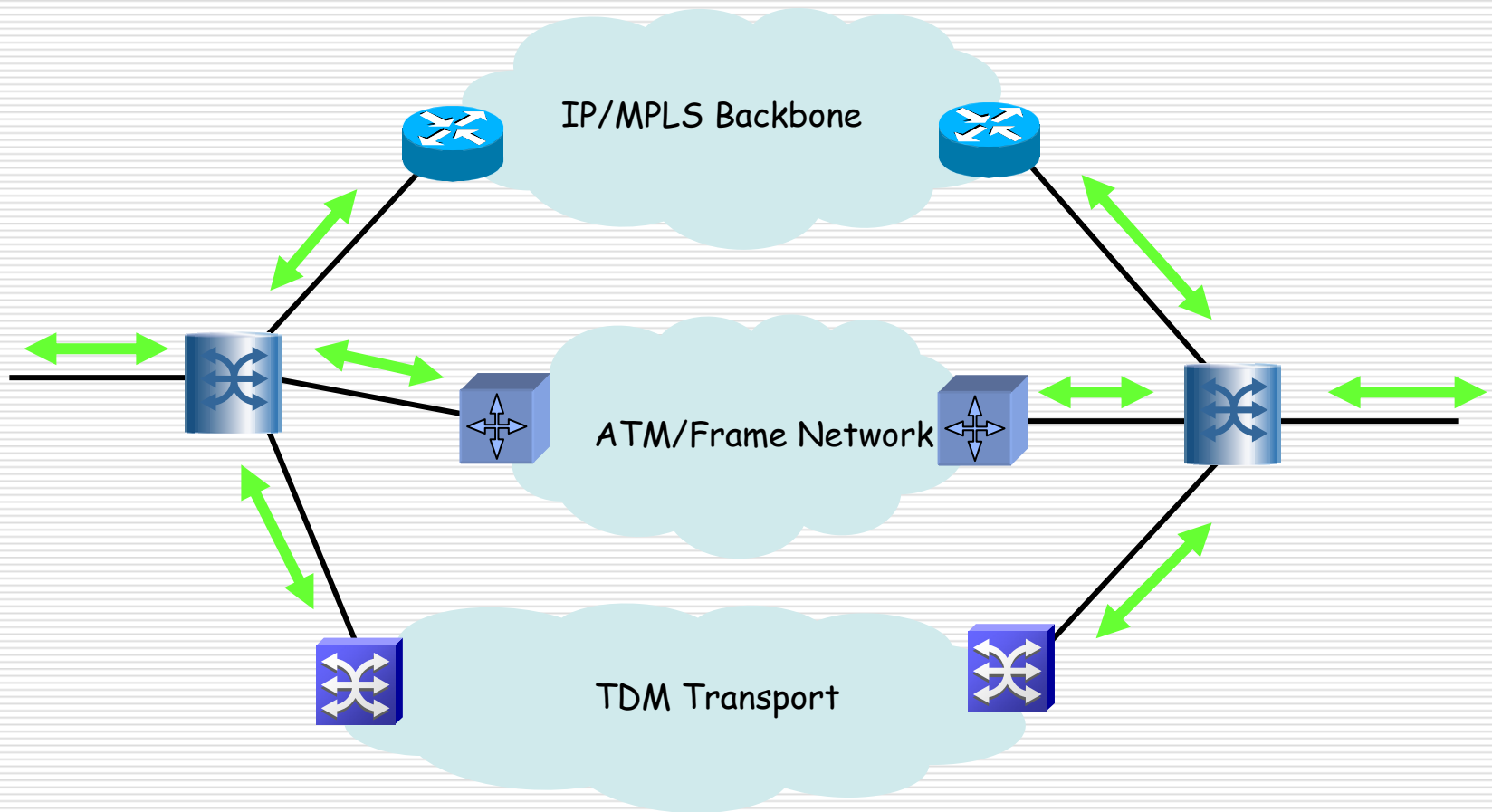
How Dry?



1. More than MPLS Backbone
2. More than PSN
3. ... it's any Net

A Network: SONET Ring,
GigE Link, ATM, FR...

Is this useful? ... You bet!



What to standardize, and why IETF?

- ❑ Transport networks cannot route LDP messages
- ❑ Need a special label to tunnel them through
 - Such as Explicit-Null Label
- ❑ Need to consider more to make it practical
 - QoS, OAM, switching... per-pseudo-wire

- ❑ In the context of PWE3 data transport...
 - All PE's share the same IP capability
 - Only need IETF defined PWE3 encapsulation
 - No need to re-invent other encapsulation types

Thanks!

Questions?