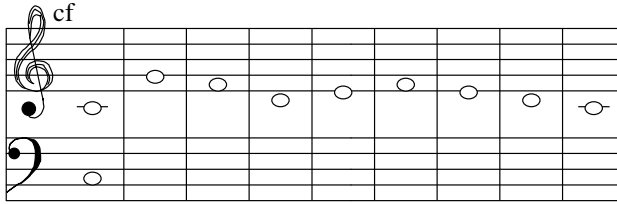


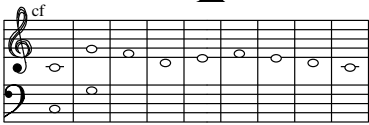
First Species Example



Voice Leading

Rules detect existence of incomplete counterpoint
Each voice leading rule attempts to add a next note to the counterpoint. Each rule corresponds to exactly one possible interval movement. Each interval has its own set of criteria (see rules handout)

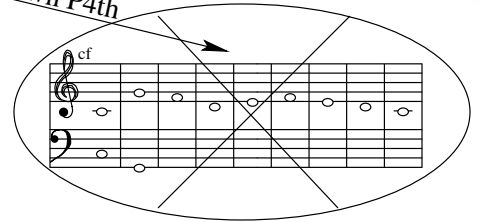
Up P5th



Up M3rd



Down P4th



The Down P4 rule fails:
It refuses to generate parallel octaves. Also, the distance between voices would be $>$ a 10th.

Fails Octave Test:
The previous interval is also an octave. Hence we have parallel Octaves.



Passes Major 10th Test:
There are not too many 10ths in sequence.
(See Rules for full description)

Harmony

These rules detect existence of new voice-led counterpoint. These rules are responsible for validating the harmony between the cantus firmus note and the new counterpoint note(s). Also checks for parallelisms and sequences of similar harmony.

